



# Pastel Artists.Ca

*“Purely Pastel”*

[www.pastelartists.com](http://www.pastelartists.com)

Member of IAPS [www.pastelinternational.com](http://www.pastelinternational.com)

Winter Newsletter, November 2008

## From the PAC unused Image file



*Niagara Landscape* by Ann Kelly Walsh



*Cornish Seascape* by Joan Lansdell



*Fractal* by Brittani Faulkes



*Demoiselles* by Claire Chevarie

I have taken this opportunity to show a few of the paintings from my unused PAC image file. They may be so old that the artists will not remember them. If you have paintings you would like to send me I will look forward to filing them away for future use.

*June*

## *Pastel Artists.Ca - Purely Pastel Winter Issue, 2008*

**Pastel Artists.Ca** was founded in 1989. First known as Pastel Artists of Ontario, Canada, the name was changed in May of 2003 to Pastel Artists Canada. In August, 2007 it was incorporated under its present name, Pastel Artists.Ca., still expressed as Pastel Artists Canada.

**Our purpose** is to promote public appreciation of Dry Pastel and to improve the skills of artists working in this Fine Art medium.

To this end, we sponsor workshops led by well-known international instructors and our own experienced teachers. We maintain a website, [www.pastelartists.com](http://www.pastelartists.com) and publish a colourful quarterly Newsletter "*Purely Pastel*". Both are well stocked with member news, information about pastels and opportunities available to pastel artists.

Membership in PAC is open to all who are interested in the medium of Dry Pastel.

### **Membership in PAC entitles you to:**

- receive the quarterly Newsletter by mail and on the Members Only portion of the website; for a small fee, participate in the Online Gallery of the website and post your own events;
- participate in the annual Members' Show (with entry fee), reduced entry fee to workshops and the Annual Open Juried Show, "*Purely Pastel*";
- the signatures PAC and MPAC (Master Pastellist) upon qualification;
- reduced entry fee to the Pastel Society of Eastern Canada (PSEC) Juried Show and workshops;
- membership in the International Association of Pastel Societies and participation in IAPS competitions and Biennial Convention (the next is 2009).

Membership is based on the calendar year and renewal is due on January 1. New members joining after September 1, will have the following calendar year included with the initial membership fee.

Annual Membership	\$50 CAD
Outside Canada	\$60 US

### **PAC Contacts**

**Sally Jackson**, PAC, Oakville, Tel: 905-844-0207  
Director, President sally@pastelartists.com

**Rosemary Simpson**, PAC, Milton, ON Tel: 905-335-8074  
Director, Past-President, Admin- Fax: 905-335-7482  
istrator of Web Service rsimpson@pastelartists.com

**Heidi Rohde**, PAC, Burlington, O Tel: 905-335-9866  
Director, Vice President & heidi@pastelartists.com  
Workshop Coordinator

**Lynne Ritchie**, Toronto, ON Tel: 416-604-3315  
Director, Secretary & Publicity lynne@pastelartists.com

**Philip Allanson**, Flesherton, ON Tel: 519-924-2202  
Director, Treasurer allanson@bmts.com

**Barb Harris**, PAC, Flesherton, ON Tel: 519-924-3792  
Membership & Archives barbh@pastelartists.com

**June Gauthier**, PAC, Flesherton, ON Tel: 519-924-2202  
Director, Newsletter Editor newsletter@pastelartists.com

**Cathy Cullis**, PAC, Burlington, ON Tel: 905-333-6509  
Publications cathy@pastelartists.com

**Tim Daniels**, PAC, Burlington, ON Tel: 905-632-1978  
Master Pastellist Chair timothydaniels1@mac.com

### **Area Representatives**

**Mette Baker**, Dunrobin, ON Tel: 613-832-3737  
Director, Ottawa & Area mette@pastelartists.com

**Vicki Brophrey**, PAC, Guelph, ON Tel: 519-822-8603  
Southern Ontario vicki@pastelartists.com

**Eldora Taylor**, PAC, Meaford, ON Tel: 519-538-5181  
Mid-Western Ontario eldora@pastelartists.com

**Inak Gieysztor**, PAC, Montreal, QC Tel: 514-939-4321  
Quebec inak@pastelartists.com

**Brittani Faulkes**, PAC, Richmond, BC Tel: 604-916-0458  
Director, Western Canada brittani@pastelartists.com

**Pastel Artists.Ca**  
**PO Box 351**  
**Flesherton, ON**  
**N0C 1E0**

[www.pastelartists.com](http://www.pastelartists.com)



## From the President's Easel

We had our **Annual General Meeting** on Sunday, November 2, 2008, still in competition with fall weekend studio tours, unfortunately, but I think we held our own.

Why two AGMs in 2008? Because our financial year-end is now July 31 and we must hold an AGM to approve the year's financial statements within six months or we will have the Feds on us. We were very lucky that weather conditions were good last January. We are spread out and must take travel conditions into account so, given that, I have ruled out the 3 winter months; everyone seems to be too busy for anything in September, the fall studio tours are in October, which leaves November. It does not matter if 12 calendar months have not passed. The next AGM will be in November 2009.

There was time for socializing and a nibble-lunch in Studio C at the Neilson Park Creative Centre, sun streaming in. Bernie Gelfand manned a table of pastels and books that Jack Richeson donated for fund-raising when he came for the Juried Exhibition opening in August; sales were brisk and we raised \$132 for our coffers.

An AGM is a time to look back over the past year. **There was a lot to celebrate and be proud of in 2008:** the smashing Symposium, above all, with Michael Chesley Johnson's plein-air workshop the week before, a fun Members' Luncheon with the PanPastels and a Members' Show with the Mixed Media trade booth in the middle; a wonderful 17th Annual Open Juried Show, with an elegant opening reception and sleek catalog; a workshop with Richard McKinley that he apparently enjoyed every bit as much as his students and to top it all off, two impressive new Master Pastellists, Karin Richter and Michael Chesley Johnson.

Our membership has grown to 204, most of us in Southern Ontario, but there is a large cluster in Eastern Ontario and Ottawa and another on the West Coast, with growing membership in Alberta and the Maritimes.

On the other hand, our fall paint-outs both east and west were a bust, so please tell us if you would like us to change the format or leave it up to you to find paint-out partners and locations. Are there other ways we could help you enjoy the fellowship of other pastellists?

I broke the news of the unavoidable \$10 fee increase that will cover our insurance premium and increased newsletter printing costs. Our financial situation changed in the 12 months from August 1, 2007 to July 31, 2008, with unexpected costs for the Juried Exhibition in BC, the first liability insurance premium and the incorporation legal costs. In addition to that, we overspent our income for the year. Fortunately, we were able to rely on the comfortable cushion that had been

built up in previous years. We do not anticipate a repeat shortfall next year; the fee raise will make a big difference, there will not be incorporation costs and we are paying close attention to covering our everyday, unseen, overhead costs in everything we do.

During the meeting, a strong desire for a different website model and fee structure was expressed and a committee was struck to work towards a new design.

The Executive Committee for 2009 was appointed by the Board of Directors and announced at the meeting:

Past President	Rosemary Simpson
President	Sally Jackson
Vice-President	Heidi Rohde
Secretary	Lynne Ritchie
Treasurer	Philip Allanson
Membership	Barb Harris
MPAC Chair	Tim Daniels
News Editor	June Gauthier
Publications	Cathy Cullis
Publicity	Lynne Ritchie
Workshops	Heidi Rohde
Website	Rosemary Simpson

The following Directors were proposed and subsequently elected by the membership:

Sally Jackson	President
Heidi Rohde	Vice-President
Lynne Ritchie	Secretary
Brittani Faulkes	Western Director
Rosemary Simpson	Director
June Gauthier	Director
Mette Baker	Director

We are pleased to be working on your behalf in the present and for the future of our pan-Canadian organization. We are always on the lookout for new blood, of course, so I invite you to come on board and help us to keep it rolling.

At the January AGM, the use of copyrighted material and other people's photographs as starting points for paintings was discussed; the Standards Committee struck at that time reported to this month's meeting their belief that the existing standard as expressed on all our entry forms adequately describes our policy. The intention is not to put restraints on the art practices of any members, only to define criteria for PAC's own purposes. The members present were satisfied with this resolution.

The annual reports and minutes of the meeting will soon be posted on the website in the Members' Only section.

After the business of the Annual General Meeting, we took a snack and chat break while **Tim Daniels** plugged in his presentation, "Computer Tools for Artists". First, he explained the ins and outs of 72 dpi and pixels x pixels and then went on to show a tantalizingly few of many ways he has been using the computer to go deeper into his creative process. We

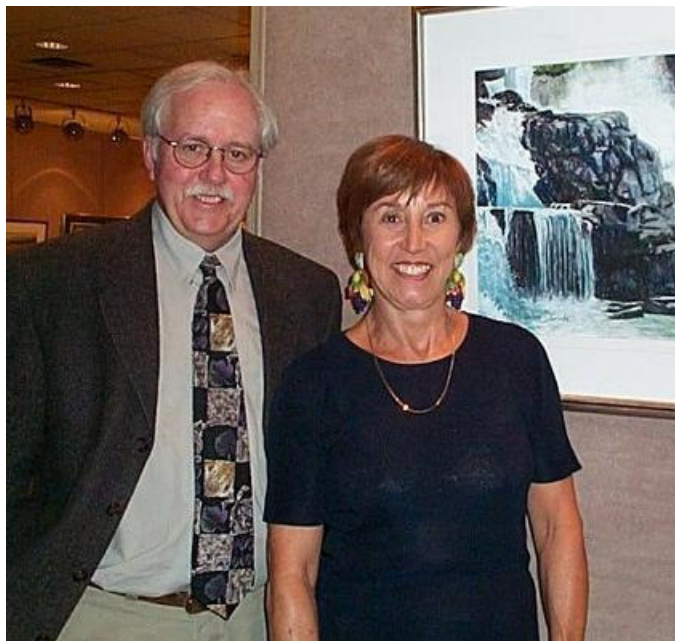
## *Pastel Artists.Ca - Purely Pastel Winter Issue, 2008*

wanted much more time but had to be out of the Studio by 4 pm. A future workshop will be arranged. (See Tim's Tips #4 on page 9.)

We have been favoured by very generous **sponsors** this past year. Jack Richeson continues to go above and beyond, and he and his wife, Linda, and Dave Kuruc at Mixed Media in Hamilton are now family, really. Our anonymous Abstract Award donor continues to support us and *The Pastel Journal* stepped up to the plate yet again. The Art Gallery of Hamilton waived their usual \$750 fee for use of the Fischer Gallery. Our new sponsors this year are Terry Ludwig, PanPastels and Rtistx Art Panels, who have all been very generous to us in prizes and workshops.

Maureen Dorinda is retiring from the Executive Committee after 7 years wearing different hats: social convenor, archivist, MPAC Committee member and finally MPAC Chair. At all times she could be counted on to offer her opinion from a sensible point of view, cut to the essence of any situation, and more often than not, suggest a workable next step. What an asset to any management group! The people of the Lake Scugog area are lucky that Maureen has shifted her focus to the arts community there, and we will miss her.

**Sally**



Tim Daniels and Maureen Dorinda

### ***Membership Report*** – Barb Harris

Each year a new membership list goes out to all PAC members with the May issue of the newsletter, however, at the Annual General Meeting on November 2, 2008 a member said she would like to keep her membership list up to date. It was decided that a contact email address or telephone number

should be added to the new members in this column, enabling you to network with members living in your local area.

We hope some of our new members will send along a mini-bio, with one or two images, for publication in upcoming newsletters to June Gauthier at: [newsletter@pastelartists.com](mailto:newsletter@pastelartists.com).

Welcome to the following new members who have joined PAC since the Autumn newsletter:

Josephine Antaya, Aurora, ON - [jkantaya@aci.on.ca](mailto:jkantaya@aci.on.ca)  
Roslyn Bern, Chelsea, ON - [rbern@magma.ca](mailto:rbern@magma.ca)  
Teresa Bingham, Hamilton, ON - [tbingham@cogeco.ca](mailto:tbingham@cogeco.ca)  
Eileen Bird, Ancaster, ON - [v.pala@primus.ca](mailto:v.pala@primus.ca)  
Heather Dillenbeck, Perth, ON - [hdillenbeck@gmail.com](mailto:hdillenbeck@gmail.com)  
Diana Fenty, Mississauga, ON - [difenty@sympatico.ca](mailto:difenty@sympatico.ca)  
Joy Hanser, Vancouver, BC - [joyh@wcteltech.net](mailto:joyh@wcteltech.net)  
Marni Koelln, Cambridge, ON - [ahorsepainter@sympatico.ca](mailto:ahorsepainter@sympatico.ca)  
Gail LaCasse, Elliot Lake, ON - [gail@artasiseeit.com](mailto:gail@artasiseeit.com)  
Margaret Scobie, Flamborough, ON - [scobelady@sympatico.ca](mailto:scobelady@sympatico.ca)

Welcome also to returning member Bernice Beal, Cambridge, ON - [gbeal@sympatico.ca](mailto:gbeal@sympatico.ca).

Those of you who have been out of the country or have let their membership lapse, you should be aware that your records are always kept in our archives and will still be valid towards your signature status when you re-join.

In this newsletter you will find your renewal form. Please fill it out and send it in as soon as possible, remembering, that to enter into the Members' Show you must be a paid member.

Any questions regarding membership please e-mail me at [barbh@pastelartists.com](mailto:barbh@pastelartists.com) or mail inquiries to:

Membership  
Pastel Artists.Ca  
P.O. Box 351  
Flesherton, ON  
N0C 1E0

### ***New Members' Mini-bio*** .....

I live just outside the village of Ayr, Ontario, close to the Nith River with my family and two golden retrievers. I began my journey in art in painting classes and migrated to drawing. My decision to add just a bit of colour to my B&W portrait drawings became the catalyst for me to discover pastels. I was immediately hooked. I love the fluidity of the shading and blending I found in this medium. I belong to a group of aspiring artists (Samsart) that meet weekly throughout the year at Homer Watson Gallery in Doon where we create art in the medium of our choice. I am currently the only one using pastels in the group though so, I relish all the info the PAC group provides and I am searching for more learning experiences in pastels.

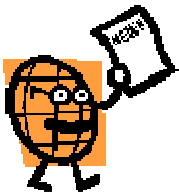
*Mary Miller*

(See Mary's painting of *Turnips* on the back cover.)



PAC lost Wilma Alexander, a long-time member and friend, on October 7, 2008. Wilma joined us on several weekend paint-outs. She was a creative person with an interest in many things. Wilma was also a writer and was delighted to find that I had bought a number of her Childrens' books for my school library. They featured Ontario locations and history in a very readable way. Wilma was a delightful person and will be missed by her friends and family.

*Rosemary*



### *Members' News ....*

**Ruth Rodgers'** work can now be viewed in three Ontario galleries: Davis Canadian Arts on the main street of Stratford, Artworks Etc. in London and now in Meta4 Fine Art and Craft Gallery in Port Perry. The Meta4, a beautiful gallery on the main street of picturesque Port Perry is a hub of creativity for the community. The four female artist-entrepreneurs are engaged in a wide range of artistic endeavours and their gallery offers a unique slate of beautiful artworks and objects. Ruth will be teaching pastel painting workshops at the Gallery beginning this winter. Please see the Meta4 website for more information:  
<http://www.meta4gallery.ca>.

PAC members **Rosemary Simpson** and **Janice McDermott** both of Milton, ON, joined a group of artists interpreting two Halton Conservation Area parks, Crawford Lake and Mountsberg, August 20–24, 2008. This was a special program, **Through the Eyes of an Artist.**

**Ann Oakley's** painting *Winter Space* won the Juror's Award in the Oakville Art Society Juried Show. The show ran from September 22 to October 24, 2008 at the Oakville Town Hall, Oakville, Ontario.

**Gail Sibley** joined with her mother, father and brother for an exhibition of their work - **A Sibley Affair** - Held September 3 to 28, 2008 in the ArtSpring Gallery, Saltspring Island, BC.

**Sharon Fox-Cranston** was the Featured Artist at the Artemisia Gallery, 34A Main Street, Westport, ON, from August 1 to August 31, 2008. *"Art is an undeniable necessity and intrinsic element that defines my life. From my first Crayola - I was hooked."*

**Sharon and Guy Cranston's** studio in Pakenham, ON, was on the Crown and Pumpkin Studio Tour over the Thanksgiving weekend. Sharon wrote to say they had a busy summer painting, not only in their local area of Lanark County but also in Italy and Newfoundland.

PAC was well represented in the 13th Annual Juried National Exhibition '**Les Pastellistes**' of the Pastel Society of Eastern Canada, held this year in Tudor Hall, Maison Ogilvie, in downtown Montreal, October 31 to November 9, 2008. Ottawa area artist **Margaret Ferraro's** painting, titled *Burdens and Blessings* won 2nd place and **Cathy Cullis** of Burlington had 3 paintings accepted *West Coast Beach, Passing-Through* and *Breaking Up* with *Breaking Up* receiving an honourable mention.

**Stephanie Wellman**, Russell, ON, won a Mention Dessin at the 9th Biennale international d'art miniature show, Salle Augustin - Chenier, Ville Marie, Quebec and was also selected as a runner-up in The Pastel Journal's Creative Spark Challenge from the June, 2008 issue. The image will be posted on their blog. Stephanie has also been accepted onto the online website [www.AutomotiveArtists.com](http://www.AutomotiveArtists.com).

**Stephanie** joined **Linda Bordage** and 30 other artists in a 2-day Fine Art Exhibition, September 27 & 28, 2008, at the Glebe Community Centre, 690 Lyon Street, Ottawa, ON.

**Aili Kurtis** has a solo show, "**Nature's Edge**", at the Atrium Gallery, Ben Franklin Place, 101 Centrepointe Drive, Ottawa, ON., from October 31 to December 3, 2008. This exhibition of pastels and acrylics will explore edges in the Canadian landscape: where earth meets the sky, where land meets water, where shadows meet reality.

**Also**, for those who have not seen the August/September 2008 issue of *International Artist Magazine*, Aili's mixed media painting, *In the Grove*, was a Finalist in the Challenge No. 46, Favorite Subjects.

**David Parson** had a mini-series of four paintings called *Pha-laenopsis* in a group exhibition at Christensen's Fine Art, 432 George Street North, Peterborough, ON, during the month of August, 2008.

*More on page 8 ...*

## Let's talk about Workshops

### Widening Your Horizons

Artists are an adventurous bunch, always on the lookout for inspiration. There is certainly no short supply of scenery and other interesting things to paint wherever you live but exploring new and foreign places can give the creative person a new perspective.

You know Karin Richter as a member of Pastel Artists Canada and she is one of our newest Master Pastellist. She is a well-known Calgary artist and popular art instructor who teaches more than 100 students per week in regular classes and conducts workshops locally and nationally. She also organizes painting holidays. These special trips are for artists and like-minded people who enjoy seeing beautiful scenery in different parts of the world to inspire their creative muse. Karin has taken groups to France in 2005 and 2007, and in the spring of 2009 she will take two groups to Tuscany, another place artists long to visit for its culture, history and scenery. The locations she chooses offer many advantages for the traveling artist: varied scenery to suit many interests in a temperate climate and all-inclusive room and board to ensure maximum painting time with a minimum of distractions. Days are filled with painting excursions to the local countryside and quaint old villages. Colourful markets are inspiring places to check out the local fare and get some interesting reference material.



Painting in France

In October 2006, Karin chose another exciting painting holiday destination as 9 artists embarked on a voyage of a lifetime aboard the oldest tall ship on the West Coast, the 104-year-old 92 ft. historic Maple Leaf Schooner to sail and paint the B.C. Gulf Islands and in October 2008, she again led another sailing trip, further up north to the Broughton Archipelago to view orcas and visit native settlements with their totem poles.



Painting on the 104-year-old, 92 ft., historic Maple Leaf Schooner

Being in a supportive environment with other artists is what draws these travellers together and painting in the French or Italian countryside or the great Canadian outdoors is everything it promises to be. It allows people to widen their horizons, embrace cultural differences and meet kindred spirits along the way. For Karin it is a way to live her dreams, the intention being to combine her lifelong passions: art, travel and languages.

### Plein-air workshop with Richard McKinley

What a treat! A 5-day plein-air workshop in Quebec with Richard McKinley, October 20 to 24, 2008.



Richard with Eldora Taylor

Words are not enough to share with you the fantastic time had by all at this workshop.

Richard is a fabulous teacher with a wealth of experience as an instructor, artist, jurist and writer. He could put the energizer bunny to shame. Richard worked all day and into the

evenings generously sharing his time and talent. The cold and rain only stopped us one day from being outside for demos, etc. Richard's visit was long awaited and anticipated and we certainly were not disappointed. While demonstrating his paintings he kept us entertained with his humorous stories.

Mette Baker found us the perfect location where we all could stay, get up in the morning, have breakfast and sojourn to the studio space. CAMMAC is by the edge of MacDonald Lake in the Quebec Gatineau hills. The scenery is truly breathtaking.

Many thanks to Mette for her organization - we were a good team.  
*Rosemary*

## Margaret Evans Workshop coming to Canmore, Alberta

Mark your calendars: **September 14 to 18, 2009.**  
Full information and registration form in the next newsletter.



Margaret Evans Demo at Mad Moose Lodge,  
Montreal River, ON., August 2003

### Comments on the Margaret Evans Workshop at the Mad Moose - taken from the PAC Winter 2003 issue:

“Margaret was a delight. With charm and good humour, she demonstrated and answered questions at the same time. We gleaned many new techniques from Margaret's well organized, highly energized workshop.”

## Painting at the McMichael

Margaret Ferraro gave a workshop at the McMichael Art Gallery in Kleinburg, Ontario, September 29 to October 3, 2008.



The gallery's plan to have Margaret's workshop at the same time as a resident artist from New Brunswick was there worked out very well. Richard Flynn is also a pastel artist and during his ten days at the Gallery Richard gave a one-day workshop and worked with individual students. Margaret taught technique in workshop and her students benefited greatly from watching Richard painting the gorgeous scenery around the McMichael en plein-air during lunch hours throughout the week. The combination of technique with practice was very inspiring.

## IAPS Special. . . . .

It's not too soon to begin planning for the IAPS (International Association of Pastel Societies) 2009 conference, from May 28-31, in Albuquerque, New Mexico. This is **THE** pastel event of the year, where you'll have the chance to learn from the best pastelists, see (and purchase) the latest products, and connect with fellow artists from around the world. Register and choose your workshops soon, as many fill up quickly!  
<http://www.pastelinternational.com/CONVENTIONS/conventions.html>.

If you plan to attend and are looking for carpooling, accommodation sharing, or simply to connect with your fellow PAC members during the conference, please send your name and email address to Ruth Rodgers. Ruth will keep everyone on the list in the loop on plans, and connect those looking for sharing. It's even rumored that a group dinner sponsored by Jack Richeson is in the works!  
Ruth's email address: [rogers.ruth@gmail.com](mailto:rogers.ruth@gmail.com).

**More Members' News:**

**Eldora Taylor** coordinated the Meaford Arts & Cultural Centre's first juried Show, the 50th East Central Ontario Arts Association Juried Show, August 30th to September 28th, 2008. It was open to all media. Fifty works were chosen from 370 members - all levels of proficiency. Held in the Centre at 12 Nelson St., Meaford, ON.

**Tony Vander Voet** participated in **Quattro** at Beaux Arts Brampton, 74 Main Street North, Brampton, ON. September 2 to 13, 2008.

**Christine Camilleri** had two paintings accepted into the Sierra Pastel Society International Show **Pastels on High** held in El Dorado Hills, California, October 5 to 25, 2008.

**Karin Richter** PAC, MPAC had her painting "*Wall of Water*" selected to be part of IAPS 12th Annual Web Show, now posted on their site [www.pastelinternational.com](http://www.pastelinternational.com).

The **Oakville Art Society's Artist Studio Tour** was held November 1 & 2, 2008. PAC members **Beverley Dillon, Mae Giroux, Heidi Rohde** and **Ann Oakley** were all participants.

**Margaret Ferraro**, Kinburn, ON., will be taking part in the **Red Trillium Studio Tour**, November 22 & 23, 10am- 5pm. For more information, please contact Margaret directly at 613-839-5241 or to view her work on the net, go to [www.ferraro-art.com](http://www.ferraro-art.com).

**Barbara Harris, Karin Meilinger** and **June Gauthier** will join 11 other members of **The Artists of the Hub** for a Christmas Show and Sale at the Kinplex, Flesherton, ON., Saturday, November 29, 10am to 5pm & Sunday, November 30, 11am to 5pm.

PAC members **Margaret Evans** and **Michael Chesley Johnson**, will be part of the IAPS programme. Michael will be doing two demonstrations on painting the Canadian Maritimes landscape and Margaret sends the following: "*It will be great to see you at this 'Pastel Heaven' and I hope you may be interested in attending some of my demonstrations/workshops.*"

**Michael Chesley Johnson's** new book, *Backpacker Painting: Outdoors with Oil & Pastel* is now available. Learn how to paint outdoors by minimizing the hassle and maximizing the fun. Loaded with tips on equipment, materials and techniques that will benefit every level of painter—164 pages with 12 demonstrations, 72 paintings and 125 illustrations. Contact Michael at [www.MichaelChesleyJohnson.com](http://www.MichaelChesleyJohnson.com) for more information or to order.

**The Pastel Society of America (PSA)** held its **36th "Pastels Only" Annual Exhibition** in September, 2008. Visit the PSA Website to see all of the winners.

**At the AGM**



Margo Pereira, Lynne Ritchie (behind Tim) and Anne Cook listening to Tim's presentation *Computer Tools for Artists* at the AGM on November 2, 2008.



Anne Cook, Lois Shaw, Meena Dhar with Sally Jackson and Philip Allanson in the background, socializing before the meeting..



Karen Meilinger and Barb Harris discussing their upcoming Christmas Show & Sale in Flesherton, ON November 29 & 30, 2008

**Tim's Tips #4** by Tim Daniels

## Computer Tools for Artists

### Image Acquisition:

While photo editing software can correct an enormous range of deficiencies in a photograph, the quality of the original photograph or scan is the most important factor in producing an acceptable image. *Always* take a photograph or scan an image at the highest quality resolution possible. Digital cameras give you the option of taking small, large, medium, extra large or RAW photos. This is a measure of the number of pixels used to capture the image. In smaller photos more interpolation (ie. educated guessing!) has been employed by the camera's processor. In all but RAW photos, pixels are thrown away to minimize file sizes and allow you to shoot more images. A 2GB memory card for example can capture approximately 600 small file images, 300 large files images but only 60 RAW images on a small Lumix point and shoot camera. Other cameras may give you some intermediate options but the same principle applies.

So, the single most important rule; use the largest image size setting that you have available to you. If you want to take more pictures, get a bigger memory card.

When **scanning** images you are given the option of scanning at a variety of resolutions. 300 dpi is the standard for documents that need to be printed. Always scan photos at 300 dpi. If you are scanning photos from books or magazines turn on 'descreen' in the scanner software to eliminate the moiré pattern created by the half-tone printing process.

### Image Editing Software:

I use Adobe Photoshop CS3. While Photoshop is the industry standard there are an enormous number of software packages available as alternatives. Some of the best alternatives are in the Photoshop family and one of them is free. Photoshop Elements is a user friendly (but still powerful) version of Photoshop. It costs about \$175. Some digital cameras are sold with a earlier version of Photoshop Elements included. While earlier version may lack some of the frills in the current version, they can do everything you will need. Adobe's closest competitor is Corel Paint Shop Pro. It has features that are somewhere between Photoshop CS3 and Elements. It costs \$99.

Adobe recently launched Photoshop Express. This is a free web based application. That means the program is not on your computer, it is online and is accessed through the internet. It has a large set of image editing, cataloguing and display tools. The best way to find out about it is to go to [www.photoshop.com](http://www.photoshop.com) and try it. It gives you 3GB of online storage and your own web domain where you can share your images with those you want to see your work. I highly recommend this site for people who are new to photo editing and would like an online presence for their artwork. Adobe's objective I think, is to give people a taste of photo editing as a

springboard to advanced adobe applications. A second free application is Picasa, [www.picasa.google.com](http://www.picasa.google.com). I have not used this software but it does have many useful features. It appears to be aimed at casual photographers and does not offer as much artistic control as Photoshop Express.

Before you do any resizing of images you should save a large image file at 300dpi and save it as a master file. You can then make copies of it for editing as you need them. Each time you make a change to your image remember to use the 'save as' feature and give it a different file name.

### Image Editing - resizing:

Say I have a painting that I want to send to Rosemary Simpson for use on the Pastel Artist.Ca website and I also would like to enter the painting into our annual juried exhibition '*Purely Pastel*'. My unedited image is 28.8 MB, approximately 4000x2600 pixels. This can print a high resolution photo 16" x 10" (240 dpi). If you send this image to Rosemary via email, she and her internet service provider will arrange to have someone put you in jail. *Just kidding. Maybe not!* Cropping reduces the image size to 13+ MB. Smaller, but still too big.

### To send the painting image to Rosemary:

Computer monitors render an image at 72 pixels per inch. My image is using an enormous number of pixels that cannot be used by the monitor. So one option is to go into "image size" make sure *resample image* is checked and enter 72 for resolution. Immediately, the file size drops from 13 to just over 1 MB. Lets make it a little smaller by reducing the pixel dimensions a little. Change the longest side of the image from 900 to 700 pixels and the image is now well under 1MB. Very acceptable for emailing and online use.

### For the Juried Show:

Here the requirements are different. Why? PAC often produces a full colour catalogue of images that are juried into the show. Printers require a much higher image resolution. Ink jet printers require 240 to 300 dpi. Commercial printing processes require 300 dpi. In addition our **Call for Entry** asks for an image at 300 dpi and a file size between 250 KB and 1 MB. *I know, it's scary isn't it? Lets go back to Photoshop.* The resolution of my image is 240dpi, we need to raise the resolution to 300. First and very important, **Turn Off** "Resample Image". Enter 300 for resolution. The dimensions of the image are not locked. Turn resample image back on and reduce the image size to approximately 3" on the longest side. The image size is now around 1 MB. It can be used on a website or it can be used to produce an acceptable print.

*I hope to make a website tutorial of this material with screen shots as it is difficult to understand without visual references.*

Contact me at [timothydaniels1@mac.com](mailto:timothydaniels1@mac.com) if you have any questions regarding Tim's Tips #4.



## Do you have a problem finding storage space for finished pastel paintings?

Karin Richter from Calgary, AB has a storage solution that may be of interest to other PAC members. She finds that she handles her pastel work frequently and therefore storage of the finished work with tissue or glassine paper in-between

stacked in a drawer is not very practical. She discovered a solution in a product from Cheap Joe's in the U.S. – a Copernicus wall-mount dry rack, most likely intended for watercolours or other wet work. It comes in floor/table units and wall-mount units, the latter being the most space-saving. It has 20 moveable shelves, size 16" x 20" and costs less than \$80., plus approximately \$20., for shipping. It is super easy to install, just 2 screws. See for yourself, visit [www.cheapjoes.com](http://www.cheapjoes.com) and place your order by phone. They will call you back with a quote for the shipping charges for Canada. The order usually arrives within a few days.

## Framing!

In the last newsletter Brittani Faulkes took us through the steps of French Envelope Framing.

At the Juried Show, Sally Jackson noticed that Cheryl Roller's work was framed with the painting against non-reflective glass and looked sensational. Sally said: "I've always hated the non-reflecting glass because it disperses the light all over the painting and dulls it, but that wasn't the case here, and it was the only painting I could see clearly from my podium across the room."

Sally asked Karen Richter if she would question the Masters Gallery Framing in Calgary who handle pastellist Horace Champagne's work about their pastel framing methods. Here is what they told Karen:

- Glass in itself is archival so from that point of view, it makes no difference what glass an artist uses.
- Non-glare, UV glass is about \$70.00 for a 16" x 20" sheet (compared to \$9.00 for regular glass). They use the clear conservation glass which produces no "fuzz".
- Pastel work on paper is mostly put right against the glass and unless you have a flood or live in a climate with extreme humidity, there should be no moisture issues.

Karin works on suedeboard and lays the glass on top of the pastel painting, then frames it with a linen liner, so no mat ever touches the work. Karen finds this method easy to assemble and take apart and there is almost no dust to speak of.



*PAC Online  
&  
News Central*  
[www.pastelartists.com](http://www.pastelartists.com)

**We finally had to raise our fees since the web was initiated.** The **Online Gallery** is open to all members as long as they meet the criteria as stated in the form. 2008 fees for joining the Gallery or renewing participation will be honoured until January 1, 2009, when the new rates take effect. **So if you were thinking of joining the Online Gallery do it now.**

Our professional web master continues to keep our website a very hot cyber spot. A lot of team effort goes into the site. The executive hand in updates and forms for posting so that our members can get the latest information from the site. It is vibrant and popular with an average of over 100,000 hits per month.

When sending information please make sure it is as correct as possible. Nothing is sent to the Web master until all information from artists is complete and payment received. This is how we keep the service as economical as possible. I anticipate that we will have lots of people taking advantage of the 2008 fees. We will take them in order received and work through the requests as fast as possible even if work bleeds into the New Year.

Thank you for your patience. We can get back-logged due to travel and holidays.

All members may have access to the **Members' Only Section**. There you will find back issues of our outstanding newsletter and our Society By-Law, Rules and Regulations plus past AGM minutes.

New works by Phyllis J. Ross, Janet Lynn Burgess and Ann Kelly Walsh have been posted. Also check out the tutorials. Karin Richter has sent in a fabulous article on "The Lure of Velour". The tutorials along with the events section are very popular spots on the website. If you have a tutorial to share please let me know.

Look for a pictorial report of the Richard McKinley workshop soon.

Questions??? Registration forms to join the Online Gallery are available on the website under Membership/Join or email me at ...." - Email me at [rosemarysimpson@mac.com](mailto:rosemarysimpson@mac.com) or [rasimpson@cogeo.ca](mailto:rasimpson@cogeo.ca)

or snail mail -

Rosemary Simpson  
3019 Britannia Rd. RR2  
Milton ON. L9T 2X6  
905-335-8074



Members' Workshops & Courses

Heidi Rohde will be teaching an introductory course in Pastels Wednesday evenings at the Oakville Art Society beginning January 21, 2009. See www.oakvilleartsociety.com for information.

Margaret Ferraro has a 2-week workshop in the figure coming up in Costa Rica. It's called Accessing originality: Voice through Colour. January 24 to February 8, 2009. For a detailed itinerary, course description, cost and brochure go to www.ferraro-art.com or call Margaret at 613-839-5241.

PAC member Michael Chesley Johnson PSA MPAC will be conducting a series of mentoring plein air workshops in Sedona, Arizona, January-March 2009. These workshops will be modelled on the workshops he teaches in the summers at his studio on Campobello Island, New Brunswick, but are intended for intermediate-advanced or professional painters. For more, please visit www.PaintSedona.com, Michael's website www.MichaelChesleyJohnson.com, or call 506-752-2482 or e-mail mcj@sff.net.

Call for Entry.....

IAPS 13th Exhibition ...Ventana Fine Arts Gallery on Canyon Road, one of the finest and most prestigious galleries in Santa Fe, NM, will host an exhibition June 5-9, 2009. The prospectus is now available on the IAPS Website. The exhibition will be pre-juried by Doug Dawson PSA, and juried for awards by Albert Handell PSA. Slides only, deadline: March 19, 2009. Entry form: www.pastelinternational.com.

Advertisement for the Next Newsletter Deadline (January 15, 2009) featuring a traffic light illustration and contact information for Newsletter Editor June Gauthier.

Calendar of Events....

Table listing events for 2009: May 25 (Take-in for PAC Members Only Show), May 25-28 (Paint-out and Opening of the PAC Members Only Show), June 15 (AM pick-up of Members show paintings), September 14-18 (Margaret Evans Workshop), October 15 to November 28 (PAC 18th Annual Open Juried Exhibition).

Judy Webber writes:

'I have a rather exciting (to me for sure) story! I did a painting of a commuter (it is on my blog) on the SkyTrain reading the 24 hours, a Vancouver daily. I emailed a photo of the painting to Amber Ogilvie, CEO and Publisher. She emailed right back that she had to buy it!'

From the 24 Hours newspaper clipping Judy sent:

Leonardo Da Vinci had his Mona Lisa and now 24 hours has our own unknown muse. The Commuter.

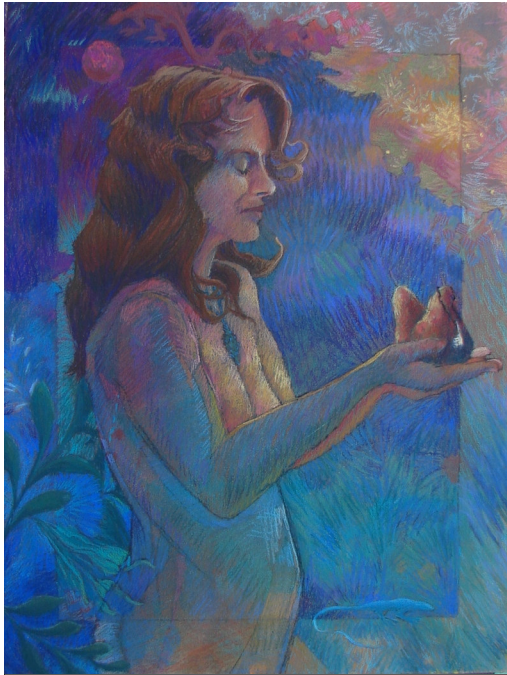
To the more than 250,000 people a day who pick up a copy of 24 hours, it's a way to catch up on current events or pass time on the commute. To painter Judy Webber it's a thing of beauty.

Webber was so taken with the image of a girl engrossed in an issue of the 24 hours that she captured it on film and transferred it to canvas.

The Cloverdale artist sees art in all sorts of unlikely places. 'My husband is just driven crazy with me saying, stop, look at the light. Look at that! I've made the poor guy back up and be in precarious positions on the side of the road.' she laughs.

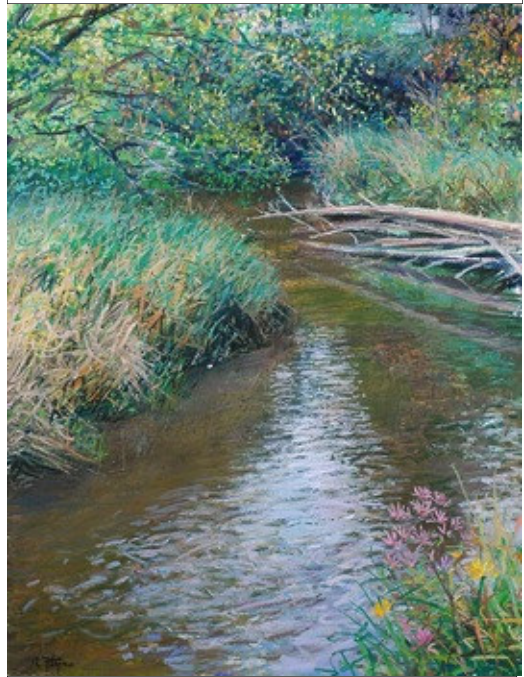
But as they say 'Beauty is in the eye of the beholder.' and maybe we're a little biased but we think Webber's The Commuter is a sight to behold. Which is why it now occupies a special place in our heart, not to mention on our wall.

Judy's blog: http://pastelgal.blogspot.com (See back cover for Judy's painting The Commuter.)



*Burdens and Blessings* by Margaret Ferraro  
(See page 6)

Painting at the McMichael  
(See page 7)



*Humber River Series* by Richard Flynn



*The Commuter* by Judy Webber  
(See page 11)

**New Member Mini-bios, Page 4**



*Turnips* by Mary Miller