

**Pastel Artists Canada**

*“Purely Pastel”*

**Autumn Newsletter, August 2006**

*[www.pastelartists.com](http://www.pastelartists.com)*

**Member of IAPS**

*[www.pastelinternational.com](http://www.pastelinternational.com)*

**Showcasing Members Show 2006**

## Pastel Artists Canada - Purely Pastel Autumn Issue, 2006

### Pastel Artists Canada

[www.pastelartists.com](http://www.pastelartists.com)

### History

The Pastel Artists Canada was founded in 1989 by a small group of artists in the Burlington area. Its membership has since grown to 200 artists. Known previously as Pastel Artists of Ontario, Canada, the name was changed May of 2003 to reflect our diverse membership.

### Purpose

To promote public appreciation of Art in Soft Pastel and to improve the skills of artists working in this fine art medium.

- PAC sponsors workshops led by well-known International Instructors plus our own teachers.
- Our Newsletter "Purely Pastel" is issued quarterly and has a lively exchange of information with international Pastel Societies. It is now available via our web site to members.
- PAC Members automatically become part of the International Association of Pastel Societies and may participate in IAPS Biennial Convention. As well as participation in PAC's own Member Shows and Juried Shows, members may participate in the Shows of the Pastel Society of Eastern Canada, in Quebec.
- Participation in the PAC Members Show is open to all members for a small fee.
- Signature Society - Granted to members who have been accepted in 3 PAC juried shows.
- Participation on our PAC Website for a small fee.
- Master Pastellist Signature Category MPAC.

Membership in PAC is open to all who are interested in the medium of Pastel.

The membership is based on the calendar year and is due each January. New members joining September 1, will receive membership for the current year and the following year.

**Membership Fee: \$40 @ year**  
**Outside Canada Fee: \$50 US @ year**  
**Pastel Artists Canada**  
**P.O. Box 351**  
**Flesherton, ON N0C 1E0**

### PAC Contacts

**Rosemary Simpson**, Milton Tel: 905-335-8074  
President, Director of Web Services  
president@pastelartists.com Fax: 905-335-7482  
**Ursula Reese**, Cookstown Tel: 705-458-2384  
Past President

ursula.reese@pastelartists.com  
**Tim Daniels**, Burlington Tel: 905-632-1978  
Vice President tim@pastelartists.com  
Administration of Web Participants  
**Heidi Rohde**, Burlington Tel: 905-335-9866  
Vice President heidi@pastelartists.com

**Ann Kelly Walsh**, Burlington Tel: 905-336-0993  
Secretary secretary@pastelartists.com

**Janet Parker**, Dundas Tel: 905-627-0222  
Treasurer janet@pastelartists.com

**Barb Harris** Tel: 519-924-3792  
Membership barbh@pastelartists.com

**Cindy Riach**, Dundas Tel: 905-627-5747  
Workshop Coordinator cindy@pastelartists.com

**June Gauthier**, Flesherton Tel: 519-924-2202  
Newsletter Editor newsletter@pastelartists.com

**Cathy Cullis**, Burlington Tel: 905-333-6409  
Promotional Publications cathy@pastelartists.com

**Lynne Ritchie**, Toronto Tel: 416-604-3315  
Publicity lynne@pastelartists.com

**Maureen Dorinda**, Port Perry Tel: 905-982-1118  
Society Record Keeper maureen@pastelartists.com

**Mette Baker**, Dunrobin Tel: 613-832-3737  
Area Rep, Ottawa & Area mette@pastelartists.com

**Vicki Brophay**, Guelph Tel: 519-822-8603  
Area Rep. South Ontario vicki@pastelartists.com

**Eldora Taylor**, Meaford Tel: 519-538-5181  
Area Rep, Mid-West ON eldora@pastelartists.com

**Inak Gieysztor**, Montreal Tel: 514-939-4321  
Area Rep. Quebec inak@pastelartists.com

**Brittani Faulkes**, Richmond, BC Tel: 604-272-8909  
Area Rep. West Canada brittani@pastelartists.com

**Sally Jackson**, Oakville Tel: 905-844-0207  
Master Pastellist Chair sally@pastelartists.com

### PAC Canada Web Site:

Members of PAC may join the Online Artists Gallery on our site. Participants must be current members of PAC and pay a Web renewal fee of only \$20 per year, due January 1 of each year. We encourage members to change their images often to keep the site interesting to visitors. The rate is \$5 per change.

Those who join by September of the current year are exempt the next January renewal fee. The site functions as an art portfolio for the participants and news central for PAC.

The site has the latest workshop registration forms for download and back issues of the newsletter.



## *From the President's Easel*

It was such a pleasure to be back at the Old Chelsea Gallery once again. The Members Show is delightful. It was great to see friends from the area and to match faces with names.

Many thanks to members: Tim Daniels - coordinator, Mette Baker - Old Chelsea Gallery hostess and Cathy Cullis - flyers and posters.

The Annual General Meeting ended up being held under the shade trees in the back yard of the Gallery, our first Plein Air AGM. We had a stack of proxies to help empower the members present to conduct business on behalf of PAC. Thank you for taking the time to send in your comments. We have many exciting things in the works.

I would like to add my congratulations to our 2006 MPAC recipients, Gaye Adams, BC and Stephanie Wellman, ON. They will be honoured at the Opening of our 15th Annual Open Juried Show in November.

You will notice there have been some changes in the executive/contact list on Page 2. Many thanks to Barry Richman for his past work with the executive. Welcome to Cathy Cullis - Promotional publications, Heidi Rohde - Vice President, Barb Harris - Membership. It was noted that the job of the Editor and the President was becoming too onerous and this is our attempt to even the load.

Cindy Riach is now Workshop Chairperson. This role has been brought back so that workshops and paint-outs can be facilitated by one person for the different areas. Please contact Cindy with your requests and suggestions. She will then look for a coordinator for the event. It is up to the membership to make their desires known.

Our 5-day workshop with Duane Wakeham was fantastic. Many thanks to Janet Parker our coordinator. The Dundas Valley School of Art (DVSA) invited the participants to mount a show of their pastel work in progress. Under Janet's direction the troops arrived with grandchildren to help and pulled it altogether. It turned out to be a wonderful teaching exhibition with lots of interest from spectators. Duane is wonderful instructor, we hated to see him go. Besides the busy days we had time to enjoy each others company. Thursday night we were treated to a catered affair at Janet's house with creative food prepared by member Chris Burtenshaw and music by Karen Leslie Hall.

Thank you to Ann Walsh, Janet Parker, Jessie Grant and Cindy Riach for opening their homes to out of town members.

*Rosemary*



**AGM en plein air in Old Chelsea, QC.**

Inak Gieysztor, Karen L. Hall, Normand Baril, June Gauthier.

Back row - Boni Penna and his wife Mariella.

Rosemary Simpson and Heidi Rohde at table.

Others not in the picture - Mette Baker, Sally Jackson, Phyllis Ross and Elsa Black.

### **Notes from the 2006 Executive and Annual General Meeting:**

At the meetings the following decisions and announcements were made:

#### **Policy re Workshops:**

**Workshop coordinators** will be able to take their workshop for free as a thank you for the work done.

**Anyone billeting** an instructor will have their expenses paid.

#### **Policy re Awards for Juried Shows:**

A painting may only win one award.

Any cash donation should not be more than the PAC First Prize.

PAC gratefully accepts donations for awards as long as they are free of commercial pressure and have no conflict of interest re the objectives of PAC. Donors may describe the purpose of the award and stipulate the number of years if applicable.

#### **Website:**

Online participants may request a link to their home website as long as it is reciprocal. Links are not provided to members who do not have a presence on our PAC website. You must be a PAC member in good standing to remain on the website. PAC will investigate Pay Pal as long as individual online participants sign up personally. PAC does not wish to have a merchant credit card due to non-profit status.

#### **Workshops:**

**Please contact Cindy Riach** with your suggestions for two or one-day workshops and paint-in/out for this coming year. We need to set a calendar of events. Paint-in/out have no instructor.

#### **Richard McKinley 5-Day Workshop - October 2007**

Dates and location are still pending. Bridgewater, Bark Lake or Haliburton have been suggested.

## Pastel Artists Canada - Purely Pastel Autumn Issue, 2006

### Juried Shows:

- 2006** - Juror Duane Wakeham. November 11, 2006 to January 4, 2007 at the Art Gallery of Hamilton.  
**2007** - ArtSprings on SaltSpring Island, BC. August 7, 2007  
Coordinator - Gail Sibley  
**2008** - Open, however, the Ottawa area is a possibility.  
**2009** - The Art Gallery of Algoma, Sault Ste. Marie, ON.

### Members Shows:

- 2007** - Oakville Municipal Building, Oakville, ON is under consideration.  
**2008** - April in the Burlington Art Centre, Burlington, ON in conjunction with a weekend Pastel Symposium.

### Constitution:

The proposed amendment was re-worded. It was felt that a clear statement was needed in the event that the president could not carry on. A committee consisting of a Vice President, the Secretary and Treasurer would be empowered to carry on the business of the association.

### Roles of the Executive:

As PAC has grown, so have the responsibilities. In large part the extra has been picked up by the President and the Newsletter Editor. The new positions for Promotional Publications and Workshops Coordinator are meant to even out the workload. Heidi Rodhe and Sally Jackson will update the document defining the responsibilities for each executive position to see if more sharing can be done.



Viewing the Members Show in Galerie Old Chelsea

### Be Aware of Art Scam:

The participants in the PAC Online Gallery will find this old news because as soon as we realized these scammers had targeted the PAC website we sent out a quick email alert warning of the scam. Fortunately for us, we have an internet sleuth in our membership and this is what she found.

What is news is that I have just finished reading the *NZ Pastel Artist* the newsletter from Pastel Artists of New Zealand and guess what, they are reporting the same scam. Same poor grammar, method of payment and same new home in South Africa.

*Apparently, what happens is; if an artist answers and sends prices the 'buyer' agrees to purchase a few of his paintings. The 'buyer' sends a 'traveler's cheque' or something like that. But wouldn't you know that the cheque is for double the amount of the paintings. When the 'buyer' is told of the mistake, he simply suggests that the artist cash the cheque, keep the agreed amount and send the extra amount back when he ships the paintings. It takes a while for the traveler's cheque to bounce back to the artist's bank and meanwhile he has sent the paintings and the 'extra' money to the 'buyer'.*

**Cathy Cullis**

Many members sent in other art scams that they received and **Barry Richman** offered this advice: *"I believe a sincere buyer would probably not offer to purchase quantities of my work without some more personal contact, let alone "All your unsold work" as was suggested by one letter to me. **WHEN IN DOUBT.. DELETE.** Honest buyers will re-contact you."*

### Membership Report - Barb Harris

Hello everyone. I have just taken on the duties of membership for PAC and hope you find everything correct in the enclosed list of members. If not, please be sure and let me know so we can get it straightened out. I will look forward to meeting you at one of the PAC shows, workshops or paint-outs in the near future. (Please see important notice re membership list on page

If you have any questions regarding membership please email [barbh@pastelartists.com](mailto:barbh@pastelartists.com) or you can mail inquiries to:

Membership  
Pastel Artists Canada  
P.O. Box 351  
Flesherton, ON  
N0C 1E0

A warm welcome is extended to our new members:

**Ingrid George**, Parry Sound, ON  
**Rosie Habermann**, Mississauga, ON  
**L. Susan Priest**, Kelowna, BC  
**Al Hemmings**, Edmonton, AB  
**Myka Jelier**, Rosedale, BC  
**Ruth Rodgers**, Lakeside, ON  
**Howard Rafuse**, Burlington, ON  
**Cindy Gerszke**, Montreal, QC  
**William Johnson**, Hamilton, ON  
**Tina Revie**, Cambridge, ON

If you have not already done so, I would like to remind new members to send in a mini-bio with one or two images to June Gauthier, newsletter editor ([newsletter@pastelartists.com](mailto:newsletter@pastelartists.com)). We will try and get it in the next newsletter.

Membership in PAC is open to all who are interested in the medium of pastel. Membership is based on the calendar year and is due each January. New members joining after September 1st will receive membership for the current and following year. The annual fee is \$40 and outside Canada \$50 US.



## Congratulations

**Gaye Adams and Stephanie Wellman**

**our 2006 Master Pastellists**

Unfortunately, we were not able to showcase all the wonderful paintings from our new MPAC's portfolios in this newsletter. Please see the back cover for the paintings we could reproduce, then go to our website to view the rest.

We had seven applicants this year. This is the third year of MPAC, each year bringing changes from the year before as we fine-tune the process to ensure that it meets the goals set for it.

A crucial part of the MPAC process is the critique offered by the judges on each portfolio submitted, a learning tool for the individual applicants. Each year, we summarize these comments in the hope that you will read them with your own work in mind - there is something here for everyone and a challenge to all of us to create paintings that will elicit the enthusiastic reviews of the successful portfolios.

### Judges comments on the accepted portfolios:

- Shows sparkle and compositional awareness.
- Clarity of concept, great observation of detail and rich visual feeling.
- An understanding of the medium and strong rendering skills, with a fine touch and feel for pastel that demonstrate complete control of the medium.
- A great sense of colour, use of dark/light contrast and sound craftsmanship.
- Unusual subject matter, interesting and arresting moments and fine composition, showing power and confidence.
- Great observation of detail and rich visual feeling, the landscapes range from spectacular moments to serene.
- It is good to see artists challenge themselves and win!

### Judges positive comments on other portfolios:

- Evidence of careful observation of detail, light and shadow.
- The compositions are interesting.
- Sensitive studies showing artistic flair while revealing something unique about humans on an universal level.
- Nice expressive, gestural mark-making, energized and controlled.
- Figures and ground integrated well, a fine sense of unity.
- Strong on passion and emotion.
- Work quite vivid and loose with exciting use of colour and line, a fine feeling for pastels.
- Commendable experimentation and variation in style.

### Judges comments "Needs Improvement":

- Weak in drawing skills.
- Images based on someone else's creative artwork.
- (Slide) Masking of images was very distracting, better slides needed. (*Presentation is important!*)
- Work lacks focal point, compositions need to be strengthened.
- Look for more detail in the subjects; texture, line, shape, contour, etc.
- Some works very engaging and fresh, other seem more predictable, ordinary. (*Consistency*)
- More work from life needed, less from photographs.

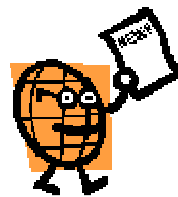
### On working from photographs:

If you are working from photographs, you will not have as much visual information there from the beginning and your artistic choices will be limited. You have to go beyond the photographic information - do not get trapped by the photo image.

**Sally Jackson**  
**MPAC Chair**



Boni Penna with his back to us with Sally Jackson and Karen Leslie Hall at the Members Show Opening.



## Members News

Just an update on the Belfountain paint-out that took place on April 21, 2006. Lisa Beechener and Christine Edwards joined me on this beautiful day and we so enjoyed the area that all of us are threatening to return. There is such good subject matter to explore. **Vicki Brophrey**

**Leyla-Aysel Munteanu** won admittance into the American Juried Art Salon's 2006 Spring/Summer Show. Top college and university art educators from Texas, Alabama, New York, Pennsylvania, South Dakota and North Carolina judged this year's competition. Artists from the US, Canada, Mexico, Spain and Belarus participated in the event. The title of the accepted works are *The Glass Cups* and *Was*. To view Leyla's work go to [www.artjury.com](http://www.artjury.com), click on the anime and choose **By Title**.

## Pastel Artists Canada - Purely Pastel Autumn Issue, 2006

### Diana Philpott, SCA, OCA 1936-2006

We are sad to tell you that PAC member Diana Philpott, died on June 2, 2006. She had been ill with cancer for many years. Along the way, she lost her right arm to the disease, undaunted, she started painting with her left and even took up inline skating, one of many sports she enjoyed.

Diana was an active and successful participant in the art community after coming to Toronto in 1966, exhibiting and winning awards in numerous shows over the years and being elected to the Society of Canadian Artists and the Ontario Society of Artists and membership in the Guild of Portrait Painters with Albert Chiarandini, The Humber Valley Art Club, the Etobicoke Art Club, the Central Ontario Art Association and Pastel Artists Canada. Much of her most productive work was done at the Neilson Park Creative Centre in Etobicoke. Our condolences to her family & friends

See the back cover for Diana's portrait of *So Dolly Damsion's Done it Again*, which demonstrates her sure-handed technique very well.

Phyllis Ross, PAC	<i>It's the Berries</i>
Mary Ann Sharpe	<i>Cavendish</i>
Rosemary Simpson, PAC	<i>October Skies</i>
Rosemary Simpson, PAC	<i>Spring Marsh</i>
Jean Spencer, PAC, Founder	<i>Tender Trilliums</i>
Eldora Taylor	<i>Beaver Valley Falls</i>
Eldora Taylor	<i>Winter Frost</i>
Ann Kelly Walsh, PAC	<i>Sunset House</i>
Stephanie Wellman, MPAC, PAC	<i>Summer's End</i>
Stephanie Wellman, MPAC, PAC	<i>Mer Bleue</i>
Alexina Wiegand	<i>Trillium</i>
Alexina Wiegand	<i>Autumn Birches</i>
Mike Zavits	<i>Gone South</i>
Mike Zavits	<i>Poppy Time</i>



Duane Wakeham Workshop - Front row: Cathy Cullis, Mary Ann Sharpe, Duane, Eldora Taylor, Susan Scott, Judy Miner. Left back row: Jessie Grant, Diane Jones, John Gunstemsen, Janet Parker, Tim Daniels. Right back row: Ann Kelly Walsh, Gloria Burgoin, Cindy Riach, Karen Leslie Hall, Rosemary Simpson.

### Artists & Paintings, PAC 2006 Members Show

July 16 to August 16, 2006 in Galerie Old Chelsea, Chelsea, QC.

Mette Rud Baker	<i>Poppies Again</i>
Normand Baril, PAC	<i>Charlevoix (Port au Peril)</i>
Lisa Beechner	<i>Day Dreaming</i>
Elsa Black	<i>Drifting in Silence</i>
Shirley Black, PAC	<i>Rideau Sunrise</i>
Gloria Burgoin, PAC	<i>End of an Era</i>
Chris Burtenshaw	<i>Day's End</i>
Chris Burtenshaw	<i>Alaskan Sunset</i>
Cathy Cullis	<i>Forest View</i>
Tim Daniels, PAC	<i>Summertime</i>
Barbara Elmslie	<i>Island in the Stream</i>
Barbara Elmslie	<i>At Rest</i>
Margaret Ferraro, PAC	<i>Yellow Sky at the Mill</i>
June Gauthier, PAC	<i>Winter Woods</i>
June Gauthier, PAC	<i>Grey Skies #5</i>
Inak Gieszytor, PAC	<i>The Old Mill Works</i>
Inak Gieszytor, PA	<i>Miniature</i>
Karen Leslie Hall	<i>Colours for Sally 111</i>
Karen Leslie Hall	<i>Red Roofs</i>
Barbara Harris	<i>Winter's Decline</i>
Barbara Harris	<i>Summer's Glory</i>
Sally Jackson, PAC	<i>Red Dynamics</i>
Glenda Yates Krusberg	<i>Tropical Grass</i>
Glenda Yates Krusberg	<i>Forsythia and Friends</i>
Aili Kurtis, MPAC, PAC	<i>The First Snow</i>
Karen Melinger	<i>Up North</i>
Shirley Moulton	<i>Parliament Buildings</i>
Leyla Munteanu, PAC	<i>The Lock</i>
Robin Sheard Nyikos	<i>Summer Reading</i>
Ann Oakley	<i>Still Life</i>
Janet Parker, PAC	<i>Oxtongue Rapids, #1</i>
Boni Penna	<i>Baccaro Lighthouse</i>
Heidi Rohde	<i>Yellow Trees</i>
Heidi Rohde	<i>Winter Afternoon Glow</i>
Phyllis Ross, PAC	<i>Irises</i>

### Wakeham's Wisdom by Karen Leslie Hall

A few weeks ago I had the good fortune to attend the PAC five-day workshop taught by Duane Wakeham, a California artist with decades of experience in both painting and teaching. He had so much wisdom to offer, about both art and life in general, I would like to share a few nuggets with you.

Duane stressed the importance of "making a picture" as opposed to "painting a picture". Whether working from life or from photographs an artist should not try to copy exactly what one sees. Choose what to include and what to leave out. Anything that does not contribute to the painting should be left out, similarly, elements that strengthen the painting can be added even if they are not present in what you are using as a reference. The various elements should be arranged to create a strong composition.

Duane, who paints mostly landscapes of northern California, usually works from photographs; sometimes he has a carousel full of slides for just one painting and uses different elements from various slides. The resulting scene may not actually exist in real life, yet is recognizable as northern California.

Duane feels that strong composition is important. A composition should be strong enough to make someone want to cross the room to have a closer look. It is by far the most important aspect of painting, he says, without it, it does not matter how good your technique is.

It is important to do preliminary studies, to plan your

*Pastel Artists Canada - Purely Pastel Autumn Issue, 2006*

composition. While thumbnail sketches can be a good jumping off point, doing larger, 9X12, quick studies in colour help to resolve any problems with the composition and colour palette. This is an exploratory phase; these studies should not be complete paintings, but they should be complete statements. A study like this should only take 15 to 30 minutes.

Duane told us that if we did nothing but studies for the whole five days of the workshop, we would learn more about painting than if we did five finished pieces.

One principle, which I had not heard about, is to repeat the shapes in a painting, for example, the shapes of clouds can echo the shapes of the trees; this, along with the strategic use of colour, help create depth and lead the viewer's eye.

Duane is one of the artists featured in a recently released book entitled, *A Painter's Guide to Design and Composition* by Margot Schulzke.

Duane told us that when working on a painting, we must repeatedly ask ourselves, "Would this painting be interesting if someone else had painted it?" I think I will put that on a sign and hang it in my studio.

Happy painting!



Cindy, Judy, Jessie, and Karen, at Duane's workshop. See Duane's Demo on the back cover.



**Member's Workshops & Courses**

**Pastels with Margaret Ferraro - Open Studio**  
Thursdays, September 21 to November 30, 2006 from 9 am to 12 noon.

This class is offered to adults who ideally have taken the Intro to Pastel class. The first hour of the class is meant as a drawing class, with specific lessons each week, followed by independent work in pastel. Cost \$195. Contact Margaret:- 113 Terraview Drive, Kilburn, Ontario. www.ferraro-art.com Phone: 613-839-5241 Email: marg.ferraro@sympatico.ca

**A Paint-out in Haliburton**



Love painting the Fall colours? We are planning a paint-out for the week of October 10 to 13, 2006 (after Thanksgiving) at Drag Lake Lodge, Haliburton, ON. This retreat offers several heated cottages with kitchen and bathroom, a sandy beach, small watercraft, a rec hall for indoor painting and get-togethers and lots of natural scenery on Drag Lake and the Haliburton Highlands. This resort is owned by Karl and Catharine Gonnson (Heidi Rohde's brother and sister-in-law). They have been upgrading this former camp and normally rent out the cottages to families. The cost is only \$35 per night, per person for accommodation. You can join us for all three nights or as many as you like, we can even extend it to the Friday night if enough people are interested. Drag Lake Lodge is about 2 1/2 hours from Toronto. You will need to bring your own food, drinks and linens. There are 5 cabins with 3, 2 or 1 bedroom. Most of the beds are queen or double.

For more information/arrangements contact Coordinator Heidi Rohde: 905-335-9866 or Email:heidi@pastelartists.com

**Registration for Haliburton Paint-out**

Send information and cheque made out to Pastel Artists Canada to coordinator: **Heidi Rohde**  
1340 Monmouth Drive  
Burlington, On L7P 3J6

Name \_\_\_\_\_

Address \_\_\_\_\_  
\_\_\_\_\_

Phone No. \_\_\_\_\_

Email \_\_\_\_\_

I wish \_\_\_\_\_ nights accommodation at Drag Lake Lodge

Please check the nights: October 11 \_\_\_ 12 \_\_\_ 13 \_\_\_ 14 \_\_\_

Share cabin with: \_\_\_\_\_

\$35 per night for a total of \_\_\_\_\_

**A RECEIPT and directions will be issued to participants.**



## Sharing Pastel Info....

### Pastel Suppliers out West - Brittani Faulkes

Where does the western pastellist shop for supplies? Loomis and Opus art supply stores have retail branches in western Canada and Opus has an online purchasing site but their stock of pastels and papers is limited.

You can head south of the border to obtain what is unavailable in Canada. Prices are much cheaper than Canadian suppliers. Daniel Smith has Washington state retail stores, a catalogue and online purchasing but their open stock is usually depleted and box sets and paper supplies are usually out of stock.

Dakota Art Pastels is my preferred place to shop. This company has a retail store and warehouse in Mt. Vernon, Washington, a 90-minute drive south of Vancouver. They have everything a pastellist could dream of and more. It is like being a kid in a candy store when you gain coveted access to the warehouse and are handed a box or cart to pick out your goodies.

Through the Dakota catalogue and online site, pastellists have access to open stock and packaged sets of pastels and papers, books, tools, sprays, easels, paint brushes and more. They also have their own line of storage boxes and custom pastel boxes for Soltek easels and Wallis paper. They will ship to Canada - the cost is shipping plus \$9.95 for handling.

If a product is made in the US, you do not have to pay duty. I usually time my major purchases with an extended stay in the states so I do not have to pay the GST or PST.

Dakota Art Pastels owns and runs the La Conner Art Workshops, which occur from early Spring to late Fall and bring in some of North America's top pastel instructors. Check out their website at [www.dakotapastels.com](http://www.dakotapastels.com). Their mailing address is Dakota Art Pastels, P.O.Box 2258, Mt. Vernon, WA. 98273-9998. Tel: 888-345-0067 or [info@dakotapastels.com](mailto:info@dakotapastels.com)

#### Editor's note:

I used to buy from Island Blue Art Supply, 905 Fort Street, Victoria, BC V8V 3K3. At that time, Island Blue was the only supplier of Unison pastels in Canada. They were excellent people to deal with and my order would usually arrive in Ontario within 3 or 4 days. They list pastels under Drawing Materials on their website: [www.islandblue.com](http://www.islandblue.com), Phone: 800-661-3332

### While we are talking Western Canada - Start planning your summer 2007 vacation now!

As mentioned in *Notes from the AGM* on page 4, our 2007 Annual Open Juried Show will be at Artspring on Saltspring Island, BC., starting August 7th. Visit [www.artspring.ca](http://www.artspring.ca) to view the great Visual Art Wing and then visit <http://saltspringtoday.com> for a tour of the island and anything else you want to know about the island. No internet? Write to Saltspring Island Chamber of Commerce, 121 Lower Ganges Rd., Saltspring Island, BC V8K 2T1 or Phone toll free: 866-216-2936.

### Making a Shipping Box to ship a Painting Under Glass - Ann Kelly Walsh

We made this box to ship a painting to the PSEC 2005 Juried Show in Montreal.

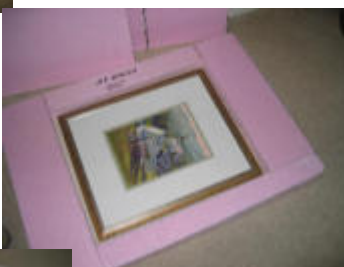
We used the pink insulation from Home Dept in two different sizes and a mirror box which we bought from U-Haul. My painting was not too large so we used 1" and 1/2" pieces of the insulation to make the packing.

First layer was 1" insulation the full size of the box.



Layer two and three created a frame for the painting with small bit of space between frame and insulation. Next a 1/2" layer of foam went into the painting space.

The painting goes in next followed by another layer of foam tucked around the painting. Then a 1/2" layer of insulation completed filling up the "painting space".



Finally a 1/2" layer of insulation finished the layers and the whole package went into the mirror box.

My name was put on every piece to assist whomever had to put the thing back together. If you have ever packed up a show, you will be aware that it helps to keep packing from being mixed up with others.

## Pastel Artists Canada - Purely Pastel Autumn Issue, 2006

### More news on Pastels:

#### Mount Vision Pastel Company - Special offer until September 15, 2006

Mount Vision Pastel has released its new colour chart. To celebrate they are offering 10 pastels for \$20 US. You can order them online [www.mountvisionpastels.com](http://www.mountvisionpastels.com) or send a US money order to their office: 322 E. 127th Ave., Tampa, Florida, 333612-4311. Limit of 2 per customer. 888-413-2009, Contact Rosemary for a copy of the mail order form. 905-335-8074 or [rasimpson@cogeco.ca](mailto:rasimpson@cogeco.ca).

**Mixed Media**, 174 James St. N., Hamilton, ON now carries The Roz Box 1 & 2 and The Roz Bag and lots of other Jack Richeson containers to keep your pastels safe and sound! They also carry an assortment of Schmincke pastels and hope to expand their selection as demand increases. 905-529-2323 [www.mixedmediahamilton.com](http://www.mixedmediahamilton.com)

**Paris anyone?** You are invited to visit the shop of La Maison de Pastel, 20 Rue Ramuteau, 75003 France. This is a very old company that dates back to 1720. If you visit their website [www.lamaisondupastel.com](http://www.lamaisondupastel.com) the history is all there. They hope to bring their quality pastels into Canada: I have given them Curry's, Loomis, Studio 6, Wallack's and Opus as possible dealers. If you know of other art material suppliers could you please let me know. In the meantime, Rochester Art Supply in NY handle their pastels in the USA [www.fineartstore.com](http://www.fineartstore.com).  
*Rosemary*

**VCG Creative Imaging does digital images to Slides**, 251 Broadview Avenue, Suite 201, Toronto, ON M4M2G3 I have not tried them but they were recommended by Steichen Labs who do my slides. Their website [www.vcgimaging.com](http://www.vcgimaging.com) gives the guidelines and specifications for putting digital images to slides for both MACs and PCs. Phone: 416-465-5850.

### PAC Members Show

Sunday afternoon July 16th was a sunny, warm, summer day in Old Chelsea. Once again Mette Baker put out a wonderful table of nibbles in the Galerie Old Chelsea which was much appreciated by visitors and members attending the Opening.



Mette at the reception desk in the Galerie.

Normand Baril, Rosemary Simpson and Heidi Rohde helped Mette hang the show and it is a very good representation of the work our members do in miniature and full size painting.

I think one of the most pleasurable things about attending PAC Openings is I get a change to meet members face to face that I have been corresponding with through the email.

*June*



Clockwise from top:  
Normand Baril, Mariella and  
Boni Penna, Sally Jackson,  
Phyllis Ross and Elsa Black.

### Important Notice Regarding enclosed membership list!

You will find enclosed in this newsletter your personal PAC membership list. PAC does not share this information with any outside organization, however, each year we print and distribute the list to all of our members with the understanding that it is for their private use only. It is not to be used as an advertising or sales tool. It is purely a communication instrument to be used between PAC members only.

## Non-member workshops:

### Margot Schulzke Pastel and Oil Workshops, 2006:-

Learn "why you put what where" with the author of *A Painter's Guide to Design and Composition*. Limited class sizes; lots of one on one easel instruction. All levels welcome.

**October 8 - 13, 2006** - Pollock Pines (High Sierra), CA; near Tahoe. Contact: schulzke@jps.net or call 530-878-7510. 5 days, \$375 tuition, USD

**February 11 - 17, 2007** - Colonial San Miguel de Allende, Mexico. Contact: artandsoul@hughes.net or call 530-265-9213. 5 days, \$375 tuition, USD

**July 13 - 14, 2007** - Sacramento, CA at Sacramento Fine Arts Center. Contact: Marie 916-205-9861 or email at marie@dixonart.net. 2days, \$175 tuition, USD

**September 30 - October 5, 2007** - Hope Valley, CA (Spectacular east face of the Sierra). Contact: Linda, artandsoul@hughes.net or call 530-265-9213. 5days, \$375 tuition, USD.

Or for more information go to [www.margotschulzke.com](http://www.margotschulzke.com)

**3-Day Hands-on Plein Air Pastel Workshop with Sean Dye. October 18 - 20, 2006** at Gibson House Bed and Breakfast, New Hampshire. Workshop, room and meals included. Tuition: \$325 includes all surfaces, pastel samples and all under-painting mediums.

Room and meals: \$125 per night includes breakfast and lunch, \$150 for 2 people.

Visit: [www.seandyestudio.com](http://www.seandyestudio.com) For more information email Sean at [seandyestu@aol.com](mailto:seandyestu@aol.com) or call 802-482-6421.

**Pac Pastels in Progress.** The Dundas Valley School of Art (DVSA) invited the participants in Duane Wakeham's workshop to mount a show of their pastel work in progress. Under Janet Parker's direction a wonderful teaching exhibition was mounted.



Ann Kelly  
Walsh

Jessie Grant &  
Cathy Cullis  
with outside  
help

Top: Gloria Burgoin & Janet mounting paintings.  
Below: Janet with extra help getting the show started.

**Art is an extra-ordinary glance at the ordinary.**

## Call for Submissions:-

**Mueller's Gallery Unit 8** is accepting submissions for all visual artists for solo or group exhibition. The Gallery is a 3000 sq. ft. attractive industrial space with hardwood floors and ceilings and within walking distance from The Art Gallery of Peterborough. Contact Lisa Mueller at 705-868-9101 or the Gallery Director, David at 705-876-6673 to set up an appointment.

**Arts Hamilton proudly present Must Art**, an art expo in the Ferguson Train Station during Hamilton's world famous **Mustard Festival - September 1 to 3, 2006**. Arts Hamilton members can rent a booth for the week-end for only \$25. Non-members are invited to purchase booth space at Must Art for \$50 and receive a complimentary Arts Hamilton membership good until March 31, 2007. To download application form visit [www.artshamilton.ca/remain.html](http://www.artshamilton.ca/remain.html) or for more information call Megan at 905-529-9485.

**Worldwide Paint-out 2006**, International Plein Air Painters invite you to join them in their 4th "Worldwide" paint-out in Niagara Falls, Ontario, September 6 to 9, 2006. You do not have to be a member. To download prospectus go to: <http://pap.homestead.com/paintout.html>.

In 2007 the **Pastel Society of Eastern Canada (PSEC)** will create an **International Biennial of Pastel**. PSEC president Suzanne Godbout and her executive feel the relationships PSEC have established with colleagues from America and Europe offers their members an incredible opportunity for healthy competition that should incite PSEC members to excel and outdo themselves. The PSEC first international biennial exhibition will be held in the Fall of 2007, in Ogilvy's Tudor Hall, Montreal, QC., then every second year thereafter, alternating with their members' juried show **Les Pastellistes**.

## For your studio wall

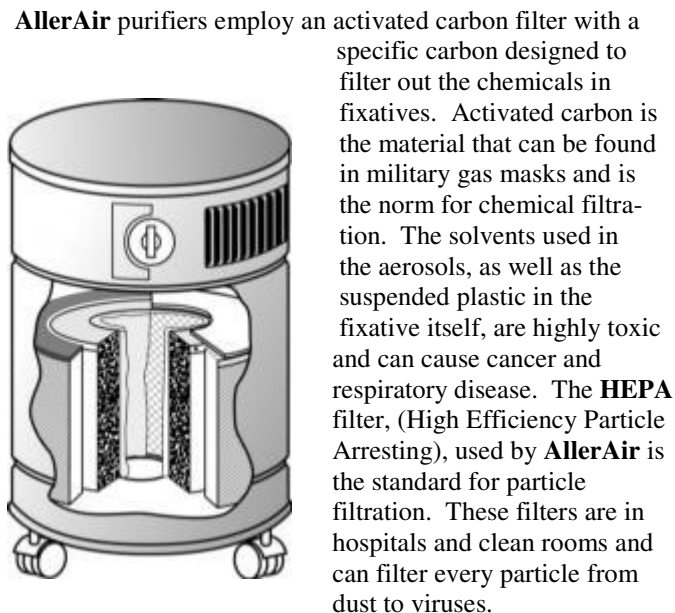
### Harley Brown's mental check list.

- **Did I soften within the shadows?**
- **Did I lose the right edges?**
- **How about dominant colour?**
- **Does the painting have good structure?**
- **Does it have a purpose?**
- **Does it have a focus?**
- **Does it have a center of interest?**

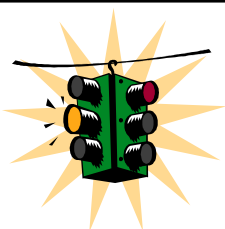
(Taken from Harley Brown's - Important Principles of Art, *International Artist Magazine*, No. 50, August/September 2006. )

## On the Commerical Side: FYI -

**AllerAir Industries Inc.** is a Canadian manufacturer of high-efficiency air purifiers suitable for artists studios. Thank you to Richard Singer, Business Development Executive, for the following information:



**AllerAir purifiers** can be purchased online or in-store from Aboveground Art Supplies located at 74 McCaul Street in Toronto or [www.abovegroundartsupplies.com](http://www.abovegroundartsupplies.com). Visit **AllerAir's** website [www.allerair.com](http://www.allerair.com) for more information or for any questions regarding **AllerAir**, air purification, or art safety, contact: AllerAir at 1-888-852-8247 or by email at [info@allerair.com](mailto:info@allerair.com).



### Next Newsletter Deadline October 15, 2006

Send your information on shows, workshops, paint-outs, tips and photos of events to:

**Newsletter Editor:**  
**June Gauthier**  
**Pastel Artists Canada**  
**P.O. Box 351**  
**Flesherton, ON. N0C 1E0**  
**Tel. 519-924-2202**  
**email: [newsletter@pastelartists.com](mailto:newsletter@pastelartists.com)**

### Next Newsletter:

Ann Kelly Walsh has shown us how to make a shipping box that will protect framed pastel paintings through the rigours of shipping and handling to out-of-town shows and back.

In the next newsletter I would like to print some advice on how to expedite the box: FedEx, UPS, Canada Post, Bus, etc.

I will need your help to do this. Please send me your shipping experiences. Good and bad. Many of us have not shipped our paintings, only participating in local shows but now that we are Canada-wide and will be having our first juried show on the West Coast in 2007, we will need advice from the members who have shipped across the country and to the US.

In the next newsletter I hope to have Claire Chevarie share her preparation of the board she has developed. Claire's email excited me to try to make one for myself and I am sure you will want to try it as well. It also sent me back to my art history books and I will tell you what I found. Very interesting!

Until the next time,  
*June*

## Pastel Artists Canada

### Events Calendar 2006 - 2007

- |  |  |
|--|--|
| August 17                              | Pick up painting from Members Only Show  |
| August 26                              | Paint-out at the Britannia Heritage Shipyard., Steveston, BC. 9:30 am to 4 pm.             |
| August 27                              | Paint-out at the Gulf of Georgia Cannery, Steveston, BC. 11 am to 5 pm.                    |
| August 30                              | Deadline for entry IAPS Logo Design Competition.   |
| Sept. 9 to 11                          | Island Paint-out in Georgian Bay.  |
| October 1                              | Notice of acceptance into 15th Annual Open Juried Show "Purely Pastel".                    |
| October 10                             | Deadline for entry IAPS Sixth Biennial Catalogue Cover Competition.                        |
| October 11 to 14                       | Paint-out in Haliburton.   |
| Nov. 11, 2006<br>to<br>January 7, 2007 | 15th Annual Open Juried Show "Purely Pastel" at the Art Gallery of Hamilton, Hamilton, ON. |
| August 7, 2007                         | 16th Annual Open Juried Show "Purely Pastel" at Artspring, Saltspring Island, BC.          |

This Newsletter was printed by:

**OniTECH.CA**  
YOUR IMAGE IS OUR BUSINESS

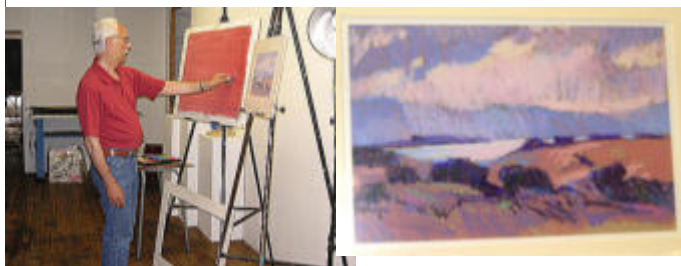
**Phone: 519-372-0183**      **Email: [wil@ONITECH.CA](mailto:wil@ONITECH.CA)**  
**Website: ONITECH.CA**

### Duane Wakeham Demo

As Karen mentions on page 8, Duane often uses a composite of resource materials to make a picture as well as plein air colour/value sketches.

Duane's favourite substrate is 300 lb. Arches watercolour paper. He staples it down and wets the paper and lets it dry. He makes a mixture of 2/3 gesso and 1/3 water adding 4 tbsps. of pumice. He then applies the mixture to the paper and lets it dry once more. Before painting, Duane likes to colour the ground with a titan red. You could apply a water colour under glaze to block in the forms but he prefers to use pastel. He fixes the pastel with mineral spirits or denatured alcohol.

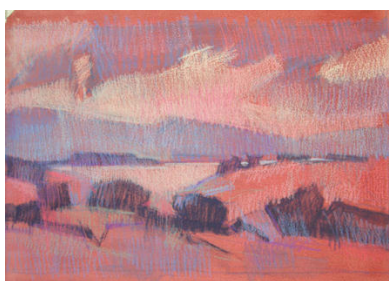
Duane works all over the paper in a loose manner to harmonize and integrate colour. Composition is key: repeated pattern of—various shapes and sizes, lines and diagonals. Duane uses colours of the same value in an area. He loosely weaves the different colours together to build a shape that has depth and sparkle.



Duane sketching in the image on his favourite paper from a colour sketch.



After blocking in forms, Duane then sets the colours with denatured alcohol and lets it dry.



Duane builds up the colours by loosely working all over the painting, interweaving colours of the same value to create forms. This is still a work in progress.

### So Dolly Damson's Done it Again

Diana Philpott

(See page 6 for tribute to Diana)



## Congratulations

### 2006 Master Pastellists

*The Tanker*  
Stephanie Wellman,  
PAC, MPAC



*Pleasant Valley Sunday*  
Gaye Adams, MPAC

