



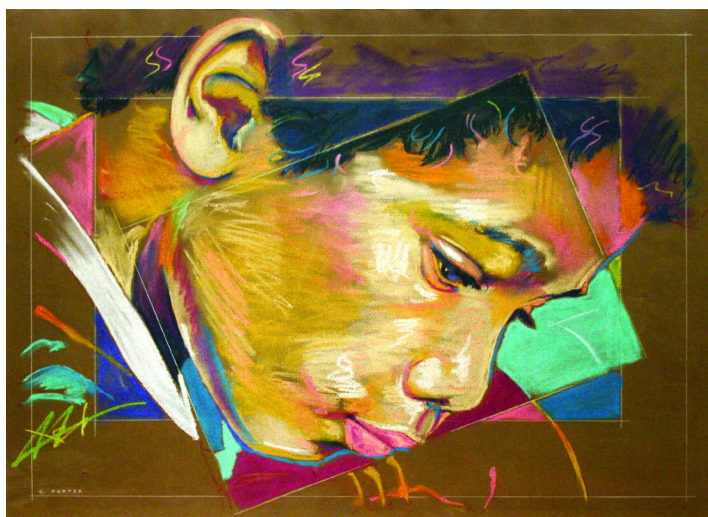
Pastel Artists Canada  
*“Purely Pastel”*

[www.pastelartists.com](http://www.pastelartists.com)

Member of IAPS [www.pastelinternational.com](http://www.pastelinternational.com)

Summer Newsletter, May 2006

*Showcasing New Works from the PAC Online Gallery* (More on the back cover)



*Jamey*  
Clarence Porter



*Vertigo*  
Denise Leman



*Quiettime*  
Brittani Faulkes



*After the Rain*  
Inak Gieysztor

## Pastel Artists Canada - Purely Pastel Summer Issue, 2006

### Pastel Artists Canada

[www.pastelartists.com](http://www.pastelartists.com)

### History

The Pastel Artists Canada was founded in 1989 by a small group of artists in the Burlington area. Its membership has since grown to 200 artists. Known previously as Pastel Artists of Ontario, Canada, the name was changed May of 2003 to reflect our diverse membership.

### Purpose

To promote public appreciation of Art in Soft Pastel and to improve the skills of artists working in this fine art medium.

- PAC sponsors workshops led by well-known International Instructors plus our own teachers.
- Our Newsletter "Purely Pastel" is issued quarterly and has a lively exchange of information with international Pastel Societies. It is now available via our web site to members.
- PAC Members automatically become part of the International Association of Pastel Societies and may participate in IAPS Biennial Convention. As well as participation in PAC's own Member Shows and Juried Shows, members may participate in the Shows of the Pastel Society of Eastern Canada, in Quebec.
- Participation in the PAC Members Show is open to all members for a small fee.
- Signature Society - Granted to members who have been accepted in 3 PAC juried shows.
- Participation on our PAC Website for a small fee.
- Master Pastellist Signature Category MPAC.

Membership in PAC is open to all who are interested in the medium of Pastel.

The membership is based on the calendar year and is due each January. New members joining September 1, will receive membership for the current year and the following year.

**Membership Fee: \$40 @ year**  
**Outside Canada Fee: \$55 Cdn. @ year**  
**Pastel Artists Canada**  
**RR3**  
**Flesherton, ON N0C 1E0**

### PAC Contacts

**Rosemary Simpson**, Milton Tel: 905-335-8074  
President, Director of Web Services  
president@pastelartists.com Fax: 905-335-7482

**Ursula Reese**, Cookstown Tel: 705-458-2384  
Past President ursula.reese@pastelartists.com

**Tim Daniels**, Burlington Tel: 905-632-1978  
Vice President tim@pastelartists.com

Administration of Web Participants

**Heidi Rohde**, Burlington Tel: 905-335-9866  
Vice President heidi@pastelartists.com

**Ann Kelly Walsh**, Burlington Tel: 905-336-0993  
Secretary secretary@pastelartists.com

**Janet Parker**, Dundas Tel: 905-627-0222  
Treasurer janet@pastelartists.com

**Cindy Riach**, Dundas Tel: 905-627-5747  
Membership membership@pastelartists.com

**June Gauthier**, Flesherton Tel: 519-924-2202  
Newsletter Editor newsletter@pastelartists.com

**Cathy Cullis**, Burlington Tel: 905-333-6409  
Promotional Publications cathy@pastelartists.com

**Lynne Ritchie**, Toronto Tel: 416-604-3315  
Publicity 9lynne@pastelartists.com

**Maureen Dorinda**, Port Perry Tel: 905-982-1118  
Society Record Keeper maureen@pastelartists.com

**Mette Baker**, Dunrobin Tel: 613-832-3737  
Area Rep, Ottawa & Area mette@pastelartists.com

**Vicki Brophay**, Guelph Tel: 519-822-8603  
Area Rep, South Ontario vicki99@pastelartists.com

**Eldora Taylor**, Meaford Tel: 519-538-5181  
Area Rep, Mid-West ON eldora@pastelartists.com

**Inak Gieysztor**, Montreal Tel: 514-939-4321  
Area Rep, Quebec inak@pastelartists.com

**Brittani Faulkes**, Richmond, BC Tel: 604-272-8909  
Area Rep, West Canada brittani@pastelartists.com

**Barry Richman**, Grand Bend Tel: 519-238-6213  
Director-at-large barry@pastelartists.com

**Sally Jackson**, Oakville Tel: 905-844-0207  
Master Pastellist Chair sally@pastelartists.com

### PAC Canada Web Site:

Members of PAC may join the Online Artists Gallery on our site. Participants must be current members of PAC and pay a Web renewal fee of only \$25 per year, due June 1 of each year. We encourage members to change their images often to keep the site interesting to visitors. The rate is \$5 per change.

Those who join January of the current year are exempt the June renewal fee. The site functions as an art portfolio for the participants and news central for PAC.

The site has the latest workshop registration forms for download and back issues of the newsletter.



## *From the President's Easel*

Wonderful opportunities are coming your way. This newsletter is full of information but first of all, I would like to say thank you to our new VP Heidi Rohde for taking on the four day Crawford Lake Paint-out. We had a great time sketching/painting outdoors and then warming up in the Gathering Place lodge. (See Heidi's comments and photos on page 6).

**COMING UP** - See the Events Calendar on page 11 for times and dates.

The **PAC Members Show** is in Old Chelsea, Quebec this July. We had to have a return visit to this charming village which is just 10 minutes from downtown Ottawa. This area is a summer tourist destination. The registration form for the Show is on page 7.

The **PAC 15th Annual Open Juried Exhibition** will be held in the Art Gallery of Hamilton, Ontario. This is our big celebration show and to mark the milestone, the first prize is \$1000. We will have the usual prizes and awards plus a private donor has offered \$500 award for the Best Abstract. Call for Entry brochure is enclosed in this newsletter.

PAC belongs to the International Association of Pastel Societies; as such you can participate in their events. See page 11 for an outline of the following IAPS events, then check their website [www.pastelinternational.com](http://www.pastelinternational.com) for all the details. If you do not have computer access contact June for a mailed out copy of the events you are interested in.

**IAPS 9th Juried Exhibition** to be hosted on their website [www.pastelinternational.com](http://www.pastelinternational.com). YES folks, this is juried by slides but no physical delivery of paintings will be required. This makes it a great opportunity for members outside the USA. That is us!

**IAPS Logo Competition** - for our graphic minded members.

**IAPS Sixth Biennial Catalogue Cover Competition** for the next Biennial Convention, May 11, 12 & 13, 2007 in Albuquerque, NM. Our own Diana Ponting was the 2005 winner of this competition and Pam Carter of PSEC won in 2003.

**PAC Workshop with Duane Wakeham.** This workshop filled up fast but if you are interested and want to be on the waiting list please contact, Janet Parker. We find that life happens and we often find ourselves with an open space.

**Paint-out in BC. - August 2006.** All the info was in the last newsletter and it is posted on our website. Brittani Faulkes, our coordinator wants to hear from you, especially from members in BC and would look forward to welcoming members from other provinces who make it a travel destination this summer. Sounds like a great weekend paint-out.

**PAC Website Application.** We often get asked how to know if you are ready to join the website. If you have shown in juried shows or are a serious pastel painter, then you are welcome. The PAC website Online Gallery is run as a Co-op. The application form is in this newsletter. Contact Tim if you have any questions; he will be glad to hear from you.

At the last Annual General Meeting a new fee structure was passed for the Online Gallery. In the survey done last year it was suggested by a number of members that the annual renewal of membership and online gallery be done at the same time. It makes good sense for our hard working executive. This coming December you will receive a renewal for membership plus an online gallery renewal if it applies. Since you are saving us time we figured you should save money. The online gallery renewal fee has been reduced to \$20 per year. Present participants will receive 6 months free this year as we change to the new fee structure.

If you are one of our online gallery artists do not forget to send some new images for this year. The front and back covers of this newsletter highlight some of the new work on the site. Your PAC membership must be current each year to remain in the Gallery.

The **PAC Annual General Meeting is July 16, 2006** in Old Chelsea, Quebec, the same day as the PAC Members Show Opening. Make it a weekend. Mette Baker is helping us plan a paint-out nearby.

Your executive met on April 28, 2006 to get the calendar of shows and workshops ready for the coming year (s). You will be hearing about some exciting new locations and events.

*Rosemary*

### *Call for Entry*

**Pastel Artists Canada  
"Purely Pastel"**

**15th Annual Open Juried Exhibition 2006**

**November 11, 2006 to January 4, 2007**

**First Prize \$1000**

**Deadline for Entry: July 31, 2006**

*The entry form is enclosed in this newsletter. If more forms are required contact: June Gauthier or download from the PAC website.*

### *Why Slides?*

With the call for entry form going out in this newsletter we felt it would be a good time to discuss why in this digital era PAC still requires all entries into the 15th Annual Open Juried Exhibition 2006 to be juried by slide only.

We know many artists consider taking and processing slides a time consuming and archaic method to enter juried exhibitions. However, until more people join the growing digital

tide, PAC wants to keep the playing field for entrants and jurors as even and impartial as possible.

Although many people are knowledgeable with the use of digital cameras, digital images and computers, there are some who are just getting their feet wet. This technology will be more acceptable in the near future.

As Bert Huizinga in the last newsletter and Janet Burgess in this newsletter (page 6) tell us, we can now have quality digital images transferred to slides. This makes things much easier for the digital user. The juror has to depend on the integrity of the artist not to change or enhance the image. If a painting arrives for exhibition that does not correspond with the selected slide the committee can refuse to hang it in the exhibition.

You will see the IAPS call for entry (page 11) to *The Sixth Biennial Catalogue Cover Competition* and *The 9th Juried Exhibition* (which by the way, will be hosted on their website) call for slide entries only.

### **Membership Report** - Cindy Riach

If you have any questions about membership please contact:

Cindy Riach  
PAC Membership  
97 Robinhood Drive  
Dundas, ON  
L9H 4G2

Tel: 905-627-5747 Email: [membership@pastelartists.com](mailto:membership@pastelartists.com)

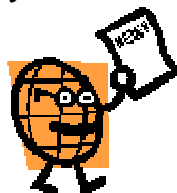
Membership in PAC is open to all who are interested in the medium of pastel. Membership is based on the calendar year and is due each January. New members joining after September 1st will receive membership for the current and following year. The annual fee is \$40 and outside Canada \$50 US.

#### **A warm welcome to our new members:**

**Gaye Adams**, Sorrento, BC  
**Barb Ariss**, Stittsville, ON  
**Lisa Beechener**, Guelph, ON  
**Donna Duffy**, Millgrove, ON  
**Linda Scott Harris**, Hawkesbury, ON  
**Kathy Mann**, Medicine Hat, AB  
**Abdelhamid Mosbah**, Hamilton, ON  
**Nancy Osadchuk**, Calgary, AB  
**Clarence A. Porter**, Hamilton, ON  
**Anne Cook**, Mississauga, ON

**and  
returning member:**

**Ron Ireland**, Beamsville, ON



### **Member News**

**Michael Chesley Johnson** has been awarded Signature Membership in the Pastel Society of America. Visit Michael's website: [www.MichaelChesleyJohnson.com](http://www.MichaelChesleyJohnson.com) to see his work.

**Barb Elmslie** has added a new feature to her website. It is a chance to win one of her paintings. Go and have a look and try your luck. [www.BarbaraElmslie.com](http://www.BarbaraElmslie.com).

**Eileen Oswald's** painting *Olympic Heart* was juried into the Visual Arts Mississauga Open Juried Show which was in the Mississauga Art Gallery until February 5, 2006. Eileen also had her painting *Boreal Web* in the Colour and Form Show, Etobicoke, Ontario.

**Louise Rouleau** displayed a series of works in pastel in an exhibition, *Man and his Roots*, in Galerie l'Espace Contemporain in Quebec City, April 19 to 30, 2006. The show will then move on to New York and Toronto. To see Louise's work go to her website: [www.louiserouleau.com](http://www.louiserouleau.com).

**Claire Chevarie** will be featured artist with a solo exhibit at Le Pays de la Sagouine, Bouctouche, New Brunswick, July 9 to August 24, 2006. Claire will give free demonstrations at Le Pays de la Sagouine, July 16, July 23 and August 15. To see Claire's work visit [www.canartscene.com](http://www.canartscene.com).

**Aili Kurtis** won two prizes, both in the Abstract Category of *The Pastel Journal's*, Pastel 100 Competition. (See April 2006 issue.) Aili's *Warm/Cool Composition* (which was in the PAC Open Juried Show at the Living Arts Centre in Mississauga and was one of the paintings sold) won Third Prize and *Swirls* won an Honourable Mention. Aili says: "Being a winner in this competition is a great honour because there are over 4000 entries from all over the world. The winning of third prize included a full page article on me and an image of my painting."



Cindy Riach, painting on the Gathering Place porch at the "Winterscape" paint-out.



Lunch break at Crawford Lake "Winterscape" paint-out. Sally Jackson, Cindy Riach, Chris Burtenshaw, Heidi Rohde, Cathy Cullis and Rosemary Simpson.

**Ursula Reese** will be giving a two-hour intensive pastel demonstration from 10 am to noon on May 3, 2006 at the Heleconian Club in Toronto. See Ursula's painting, *Spring Clouds* on the back cover.

**Waltraud Bluml** won a Pastel Society of America scholarship for a five-day workshop with Robert K. Carsten, PSA, at the Southern Vermont Arts Center this summer. Go to the PAC Online Gallery to see Trudi's paintings.

**Tony Vander Voet** took part in 'DEFROST': Spring Show in Toronto, March 18 to April 1, 2006. The show was a remembrance of Spring and the Vernal Equinox exploring the world and personal experiences through different media. The works presented there were as vibrant and colourful as the season they were celebrating.

**Barb Harris** and **Eldora Taylor** had their pastel paintings juried into The Blue Mountain Foundation for the Arts 26th Annual Juried Art Show, April 1 to April 26, 2006 in Collingwood, Ontario. Eldora's painting was, *Winter Fairway* and Barb had two paintings accepted, *Two Grannies* and *Ida* and *The Picnic Tree*, which won an Honourable Mention. **Sheila Bannerman** had one of her oils accepted into the same show.

If you subscribe to the *International Artists Magazine*; you will have already noticed that PAC is very well represented in the April/May 2006 issue. Page 25 displays the prize winning paintings and the Honourable Mention paintings that were in the PAC 14th Annual Open Juried Show. Page 18 has Ann Kelly Walsh's painting *Torrent*, that won an Honourable Mention in the Society of Canadian Artists, 38th National Open Juried Exhibition and Page 19 has Dianna Ponting's *Orange Bowl*, that won the IAPS Program Cover Contest for the 6th Biennial Convention of the International Association of Pastel Societies. Then starting on page 60 there is an article by Margaret Evans on 10 Top Tips for getting the most out of painting holidays abroad. Considering this magazine covers artists around the world, I think these artists and PAC should be very proud.

**Eldora Taylor's  
Annual Weekend Paint-out**  
(Without blackflies this year)

**Location:** Georgian Bay, Ontario - in a private cottage on a 22-acre island in McGegor Bay.

**Date:** September 8, 9 & 10, 2006

**Coordinator:** Eldora Taylor, 519-538-5181  
Email: [eldora@pastelartists.com](mailto:eldora@pastelartists.com)

**Accommodations:** 1 Queen bed, 1 double bed, 3 bunk beds, floor space for sleeping bags. Bring your own linens, including towels. Blankets are supplied. There is no electricity. Propane is used for hot water, cooking and lights.

**Cost:** \$80 per person. This includes cottage rental and the water taxi.

**To get to the island: Everyone will have to find their own way to the Still Water Marina, Birch Island, which is near Espanola.** Arrival at the marina must be coordinated with Eldora so that everyone travels in one taxi. The return trip will be booked with the taxi on the way to the island.

**Bring your painting equipment and:** food, wine, beer, drinking water and whatever else you will need while island bound. Cell phones will be the only link to the mainland.

**If you are interested please contact Eldora.** It is important to have the participants in sync with travel and living plans. This promises to be a wonderful Fall retreat.

**For your information:**

The ferry from Tobermory over to Manitoulin is \$30.20 for the vehicle, plus \$13.85 per person. Crossing time 2 hours. Tobermory crossing departure time is 8:50 am and 1:30 pm. Return time from Manitoulin is 11 am and 3:50 pm. Car pool to share the costs.

**Thank you Eldora for getting this under way.**  
*Ships Ahoy!*



On the Chicheemaun Ferry heading for Manitoulin Island.



## Communicating with PAC Members

### Janet Burgess writes:

Here is more info regarding slides from digital: Colour-chrome Labs (905-677-4675 or [www.colourchromelab.com](http://www.colourchromelab.com) or [infor@colourchromelab.com](mailto:infor@colourchromelab.com)) in Mississauga does all kinds of slide work, including digital to slide transfer. You can email the files and they will mail finished slides back to you. The cost of digital transfer is \$5 for the first one, then \$2.50 for each one after that.

### Dianna Ponting writes:

My invitation to teach a workshop in Ireland this year has blossomed into a very busy schedule and there are still two or three possibilities that may yet take place. To date I will be teaching in Suffolk, Lancashire, Wales and Ireland with some exploring of Cornwall and Scotland mixed in. It is going to be a very exciting six weeks and I have a multitude of artists volunteering to carry my bags.

For a list of Dianna's workshops please see Member Workshops on page 10.

### Janet Parker writes:

A new art supplies shop, Mixed Media, has opened in Hamilton, Ontario. The co-owners, Dave and Teresa, are trying to cater to pastellists. They have a full range of Art Spectrum paper (including the small packages of 9 x 12 sheets), they also have some Kitty Wallace paper, and the beautiful handmade Mount Vision pastels from Florida along with a few other makes. They are willing to bring other supplies in on a special order basis and will give a 20% discount on large orders. There are lots of books and magazines and Dave and Teresa offer you a seat in their lounge area to soak up some creativity. Mixed Media, 174 James St. North, Hamilton, Ontario. 905-529-2323 [www.mixedmediahamilton.com](http://www.mixedmediahamilton.com).



"Winterscape" paint-out, Heidi Rohde sketching the snowy woods at Crawford Lake Conservation Area.

### Heidi Rohde writes:

"Winterscape" at Crawford Lake proved to be a wonderful experience for the eleven painters who came out for a day or two, or all four Wednesdays in February and March. As a novice Plein Air painter in the Winter, it was a great introduction. Veterans also found the location offered many opportunities to paint, sketch and photograph. The newly renovated "Gathering Place" was an ideal spot to get warm or just paint in a studio setting. All our other needs were met, as we had access to a full kitchen, washrooms, music, etc.; really a great facility! Everyone came away with many ideas, sketches and photos. On our last Wednesday most of the group was able to share and display their paintings. The results were terrific and I know the group, Gloria Bourgoin, Chris Burtenshaw, Cathy Cullis, Jessie Grant, Sally Jackson, Cindy Riach, Ann Walsh, Magali Vrillaud, Barbara Ariss and Rosemary Simpson share my enthusiasm and would recommend this spot as an ideal location for future paint-outs.



Janet Parker  
Studio painting  
vs  
Plein air painting.



## Hard and Soft Edges

(This is taken from **Richard McKinley's** article in the October 2005, issue of *The Pastel Journal*, page 23.)

Objects we can put our hands on or arms around should have slightly softened edges. Sharp edges flatten an object's form, whereas softer edges increase the perception of depth.

Because pastels are applied to a flat surface, you must create or even heighten the effect of depth to make believable paintings. A good rule of thumb is to have things as soft as possible and allow them to become sharper where viewer's eye is to linger.

## 2006 Members Show

### GALERIE OLD CHELSEA

10 Scott Road, Chelsea, QC J9B 1R5  
TEL: (819) 827-4945

### July 16 - August 16, 2006

Vernissage/Opening July 16, 2-5 pm  
Gallery hours: 11 am to 5 pm  
Open every day except Monday

**This is an artist's choice show. Bring your best work. One work per member plus a small work/miniature.**

#### Terms of Entry:

- Open to all 2006 paid members of PAC. Each member may submit **1 (one) piece plus a small work/miniature** completed within the last 24 months. **PAC membership must be obtained at least 30 days before the deadline.**
- All work must be original; the final finishing layer must be predominantly dry pastel. The essential qualities of the painting must have been achieved with dry pastel.
- Work must not have been previously shown in any PAC Show or in the Ottawa area. This is a small intimate century home turned into a gallery with many delightful rooms. The walls lend themselves to images of approximately a half sheet plus the framing.
- **Paintings must be for Sale.** The Gallery will retain **40% commission on all sales.** *Please remember to price your work accordingly.*
- Paintings are insured on the Gallery premises for fire only.

**Fee: \$20 per member**

**Coordinator: Tim Daniels**

284 North Shore Blvd. East, Burlington, ON L7T 1W9  
Email: tim@pastelartists.com Phone: (905)632-1978

#### **Entry Forms must be received no later than June 16, 2006**

Title and price listed on the entry form must be identical to the painting delivered. Any discrepancies could lead to rejection. Labels and Show listings are made from the information on the entry form and considered "official".

**Identification Label:** Please copy Registration Entry Form and attach it to the back of your painting.

**Framing:** Paintings need to be suitably framed, ready to hang. Faulty framing can lead to rejection of the painting.

**Shipping Address: Elizabeth Rutledge, Gallery Rep.**

96 Ch. Kingsmere, Chelsea, QC J9B 1G8  
Email: cliffhanger@videotron.ca Phone: (819) 827-2643

**Hand Delivery:** Saturday, July 15, 2006 11 am to 5 pm

**Annual General Meeting:** Sunday, July 16, noon to 1 pm

**Opening Reception:** Sunday, July 16. 2 to 5 pm

**Pick-up:** August 17 - Time to be announced.

**Directions:** From Hull, QC take Hwy 5 toward Wakefield and Maniwaki. Take Exit #12 Old Chelsea, left turn through the village, turn right on Scott Rd. Gallery is the third house.

## Registration Form - Members Show 2006

*Deadline: June 16, 2006*

Artist Name \_\_\_\_\_

Address \_\_\_\_\_

City \_\_\_\_\_

Postal Code \_\_\_\_\_

Phone No. \_\_\_\_\_

Email \_\_\_\_\_

#### **Entry Registration:**

Title \_\_\_\_\_

Size: HxW \_\_\_\_\_ inches Price \_\_\_\_\_

**Miniature/Small Work (Optional)**

Image to be no more than 25 square inches.

Title \_\_\_\_\_

Price \_\_\_\_\_

Please mail entry form with cheque for \$20 made out to **Pastel Artists Canada** to coordinator:

Tim Daniels  
284 North Shore Blvd. East  
Burlington, ON  
L7T 1W9

**Do not forget to email or include a slide/photo of your work for our promotional poster and flyers.**

If you can help with the transportation of paintings re delivery or pickup, please indicate your area below.

**Note:** Paintings that are being handled in transit must be protected by a reusable foam or cardboard case with the name of the artist and painting on the outside. **If you are sending work with another member you are expected to give a donation toward their gas expenses.**

If anyone in the Ottawa area would like to billet guests staying over for the weekend please indicate. There are also many delightful B&Bs in the area.

***PAC's frequently visited website brings us many email requests through the info@pastelartists.com. Here are just a few:***

Your site is absolutely amazing and beautiful. Thank you so much for placing it on the web. Can you tell me your method of making pastel board? My instructor uses white and black gesso, neutral gray 5 and pumice. I don't understand her method well, as it appears you could just put the pumice in white gesso. What method do you use to make your pastel boards? Art Student, Casper, Wyoming.

I am in England. I understand that one of Canada's well known pastel artists lives in Suffolk, England. Is it possible that you might know his name and how I may contact him. He also apparently shows routinely in Montreal, Quebec.

Hello, I see that you have had your 14th Annual Exhibition in 2005. Will you be offering one in 2006? I live in the USA and would be interested in trying to get accepted into that show, so if you have a prospectus, please let me know.

Hello, I am inquiring about a type of paper your website keeps mentioning...Sanded Paper? Why does the paper need to be sanded? I'm usually a mixed media artist but lately I've been totally intrigued the soft pastel end of it. I would like to thank you for a very informative website. Jefferson, Oregon.

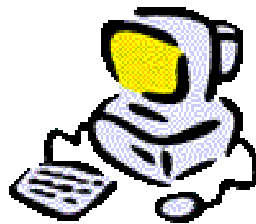
I am looking at purchasing some pieces of pastel artwork and I am concerned over potential fading of colors over time. Please advise if this is a valid concern and what could cause/prevent this action. I do not want to invest in artwork that may diminish in the near future. Is this a valid concern?

*This email was received by Janet Parker:*

I applied for membership a while back and I haven't received any information. If you could get back to me that would be great. *When we asked her to tell us what email address or mailing address she used, we never heard from her again.*



Sally, Cathy, Cindy, Gloria, Heidi & Chris critiquing their work on the last day at Crawford Lake.



***PAC Online***

[www.pastelartists.com](http://www.pastelartists.com)

***Tim Daniels***

For the past three or four months I have been thinking about designing and publishing my own website. During that time I have done a lot of research, attended a seminar and read several books on the subject. While the creative side of me is still interested in doing this project, I am aware that it is a big, complicated undertaking with a lot of costs associated with it (and I have not even begun to calculate the cost of my time).

This whole process has made me even more aware of what great value we receive from the PAC website. If you are lucky enough to have a talented friend who is willing to work very cheaply you can get a website up and running for \$300 to \$500. It would not have a lot of content or interactivity and it may or may not be nice to look at depending on what kind of graphic design skills your friend has. There are also ongoing costs related to domain name registration and server fees. If you factor in the 25,000 to 30,000 unique annual visitors and the monthly 115,000 hits that the PAC site generates... well, you can see where I am going with this. No comparison!

If you are thinking about going online get in touch with us and we can get you started with a bio page, contact information and 7 images for \$70. Plus we do all the work! The registration form is right here on the next page.

Thank you to June Gauthier, our newsletter editor, for featuring new work from the Online Gallery and our three newest gallery members: Cathy Cullis, Denise Leman and Clarence Porter on the covers of this newsletter. Go to the Members Gallery at [www.pastelartists.com](http://www.pastelartists.com) to see more of their work.

### ***Special Offer***

**Join the PAC Online Gallery  
between now and  
December 31, 2006  
and do not renew until  
January 1, 2008**

If you act fast you can have up to 6 extra months in the PAC Online Gallery for the same initial setup fee of \$70. (See explanation of setup fee in the application form on next page.) To participate in this special offer PAC membership must remain in good standing.

Pastel Artists Canada - Purely Pastel Summer Issue, 2006

PAC Online www.pastelartists.com

To participate you must be a PAC Member in good standing.

- PAC does not require any commission on sales. Artists are responsible for negotiating their own sales.
• The participants share the cost of the yearly server fee. You may have 10 images on your gallery page plus one with your bio text. A second gallery page is available - up to 10 more images. Now artists can list their own events!
• A selection of each artist's work rotates on the home page.
• Initial Setup Fee: \$70 for setup including 7 images plus a bio page with image. Please attach your bio of no more than 200 words. (Information about you and your art, not a list of shows/ awards.) Send your cheque, payable to Pastel Artists Canada, along with this form and good clear images of the paintings you have listed.
• Renewal fee: \$20 due January 1 of each year, payable to PAC by participants. Additional images are \$5 each. Bio changes are also \$5.
• Additional images/changes: You are invited to change your images/text, as you need throughout the year. Keep your images fresh - change them during the year.
• Send slides or photos and your bio ready to publish to: Tim Daniels
284 North Shore Blvd. East
Burlington, ON L7T Tel: 905-632-1978

OR

Email: You may email your images and bio information to : tim@pastelartists.com

Note: email images in jpeg format. High quality, please. Depending on orientation of the work set the largest dimension at: width 450 pixels or height 390 pixels.

Please print clearly

Name: \_\_\_\_\_

Address: \_\_\_\_\_

Tel: \_\_\_\_\_ Fax: \_\_\_\_\_

Email: \_\_\_\_\_

Images: When sending photos or slides please put your name and address along with image title, size and price. The webmaster will endeavour to have your information on the site as soon as possible after your information is received. Your name, phone number and email address will appear with your bio but not your address.

Include a SASE for return of photos/slides.

1. Title: \_\_\_\_\_

Image Size: HxW" \_\_\_\_\_ Price: \_\_\_\_\_

2. Title: \_\_\_\_\_

Image Size: HxW" \_\_\_\_\_ Price: \_\_\_\_\_

3. Title: \_\_\_\_\_

Image Size: HxW" \_\_\_\_\_ Price: \_\_\_\_\_

4. Title: \_\_\_\_\_

Image Size: HxW" \_\_\_\_\_ Price: \_\_\_\_\_

5. Title: \_\_\_\_\_

Image Size: HxW" \_\_\_\_\_ Price: \_\_\_\_\_

6. Title: \_\_\_\_\_

Image Size: HxW" \_\_\_\_\_ Price: \_\_\_\_\_

7. Bio Image: Title: \_\_\_\_\_

Please Select:

A. Initial Fee: [ ] \$70 for setup including 7 images & bio/text. Please email or mail text.

B. Renewal Fee: \$20 (January 1) \_\_\_\_\_

C. Additional images/bio change @ \$5 each. \_\_\_\_\_

Note: You may choose to have only the titles and image info on your page. Framing info and price can be left off.

My work is priced framed \_\_\_\_\_ unframed \_\_\_\_\_

Please post price with each image \_\_\_\_\_

Included is my cheque for \$ \_\_\_\_\_ payable to Pastel Artists Canada

Signed: \_\_\_\_\_ Date: \_\_\_\_\_

For Pastel Artists Canada use only:

Date Received: \_\_\_\_\_

(This form updated May 2006, earlier forms are void.)



## **Member's Workshops & Courses**

### **Dianna Ponting Workshops:**

Sudbury, Suffolk - May 15 to 18, 2006  
Carlow, Ireland - June 2 to 4, 2006  
Ystumtuen, Wales - June 10 to 12, 2006  
Oswaldtwistle, Lancashire - June 21 to & 22, 2006  
Edinburgh, Scotland - June 29 & 30, 2006  
San Clemente, California - July 15 & 16, 2006  
Sierra Vista, Arizona - September 23 & 24, 2006  
Abbotsford, British Columbia - November 18 & 19, 2006  
For more information on any of the above workshops go to [www.ponting.com](http://www.ponting.com)

### **Ann Kelly Walsh - plein air painting:**

July 10 to 14, 2006 at the Burlington Art Centre. The course will be on location except in the case of bad weather. Registration can be made through the Burlington Art Centre 905-632-7796.

### **Far Hills Inn - Summer Art Weeks with Barbara Elmslie**

July 16 to 21, 2006 and an August date to be confirmed. These weeks are at The Far Hills Inn in Val Morin, QC and start with dinner Sunday night and continue until 1 pm on Friday. The package includes 6 days, 5 nights, 5 gourmet dinners, 5 buffet breakfasts and 20 hours of painting instruction. Classes each day from 9 am to 1 pm. The rate is \$545 taxes and services not included for hotel accommodation and an additional \$125 without taxes for instruction. Arrangements can also be made with the hotel if you would like to come for only one or two days. The instruction fee if you stay at the hotel is \$25 per day. For day visitors who live nearby and can commute every day the instruction fee is \$35 per day or \$175. To register call the Far Hills Inn at 1-800-567-6636 or if you have any questions phone Barb at 819-687-2790 or [belmslie@sympatico.ca](mailto:belmslie@sympatico.ca). To read about last summer's art weeks visit [www.BarbaraElmslie.com](http://www.BarbaraElmslie.com).

### **Michael Chesley Johnson - plein air painting**

August 7 to 11, 2006 in St. Andrews, New Brunswick  
In this weeklong studio/plein-air landscape workshop in historic St. Andrews on Passamaquoddy Bay, Michael demonstrates a variety of materials and techniques, explores methods for abstracting the landscape and shows how to use intuitive, expressive colour. Each day starts with a lecture/demo, followed by plenty of time for student work. Michael gives personal attention at the easel, complete with helpful tips and suggestions. Sponsored by Sunbury Shores Arts & Nature Centre. \$375 SSANC members, \$400 non-members. For more information: [www.sunburyshores.org](http://www.sunburyshores.org) or email: [info@sunburyshores.org](mailto:info@sunburyshores.org).

### **Margaret Ferraro - Summer Art Classes, Kinburn, ON:**

#### **Introduction to Pastel - Focus on Landscape**

Monday July 17 to Friday July 21, 2006, 9 am to 4 pm.  
This five day intensive course introduces the student to the versatility of pastel. The first two days are spent making sample book of techniques, basic colour theory and how it relates to our inventory of colours and study of other accomplished pastel works to identify new approaches and techniques.  
Cost: \$250. Supply list upon registration.

#### **Pastel and the Figure**

Monday July 24 to Thursday July 27, 2006, 9 am to 4 pm.  
This four day course will explore various approaches to colour and the figure. Some experience in drawing the figure and working with pastel would be ideal. We will work through quick warm-ups with gesture and other traditional figure exercises to develop familiarity with action and alternative colour theory. Cost: \$225 plus model fee. Supply list upon registration.

Email Margaret at: [marg.ferraro@sympatico.ca](mailto:marg.ferraro@sympatico.ca) or phone: 613-839-5241 or visit her website: [www.ferraro.com](http://www.ferraro.com).

### **Glenn Bernabe - Intro to Pastel**

Curry's Art Supply Store, Markham, Ontario  
Saturday, May 20, 2006 1 pm to 5 pm

#### **Intro to Charcoal**

Saturday, May 27, 2006 1 pm to 5 pm  
Both workshops are \$36 plus GST. For more information go to [www.currys.com](http://www.currys.com) or phone 905-940-8388.



Inak Gieysztor painting Lake Superior.

## **Call for Entry:**

### **Deadline: May 30, 2006**

#### **The Printing House Charitable Greeting Card Campaign!**

This campaign offers Canadian artists the opportunity for national exposure and the chance to donate to worthy causes. The information for the campaign arrived too late last year to make it into the newsletter, so it was sent out in one of our mass email News Updates. Even with this late start, PAC Members, Shirley Black and Kelly Dodge were among the six

## Pastel Artists Canada - Purely Pastel Summer Issue, 2006

artists selected. More than 43,000 cards were sold across Canada, yielding a donation total of more than \$35,000 for the Childhood Cancer Foundation - Candlelighters Canada and The Eating Disorder Program at Sick Kids.

**To enter the TPH Campaign this year: Images must be of winter scenes, holidays or concepts in relation to the Holiday Season. There is no limit to how many submissions one artist can make. Please include your contact information and a short bio of not more than 100 words. Deadline: May 30, 2006**

Send PRINT QUALITY images of your artwork to: TPH Charitable Office, 15 Stanley Avenue, Toronto, ON L5L 5B8 or email: [charitable@tph.ca](mailto:charitable@tph.ca) Subject Header: Charitable Greeting Card Submission.

If you have any questions visit their website: [tph.ca/charitable](http://tph.ca/charitable) or contact Anita da Costa at: 416-504-5296.

**Deadline: June 30, 2006**

**The 9th Juried Exhibition of the International Association of Pastel Societies.** This will be hosted on the IAPS website: [www.pastelinternational.com](http://www.pastelinternational.com). This competition is open to artists who are members of an IAPS Member Pastel Society. Proof of society membership and a self-addressed stamped envelope must accompany your entry form and slides. The juror will be Doug Dawson, IAPS Director and PSA Master Artist. The entry fee is \$25 US for the first slide and \$10 US for each additional slide. Up to 5 slides may be submitted by an individual artist. Entry forms can be downloaded from both the IAPS and PAC websites. If you do not have access to a computer contact June for a mailed copy.

**Deadline: August 30, 2006**

**IAPS Logo Design Competition - \$1000 Cash Grand Prize**  
Eligibility and Entry Criteria:

- Artist must be age 16 or over.
- There is no limit to the number of entries you may submit
- The contest is open to all IAPS pastel artists in good standing. Please include a copy of your pastel society membership card along with your entry submittal.
- Entries must be submitted via CD in jpeg or eps digital format, maximum 300 dpi. Be sure to label your CD with your name and address.
- Logo should be suitable to be easily reproduced on a website, banner advertising literature or business card.
- Colour logos should be suitable for reproduction in both colour and black and white.
- Include an appropriately sized self-addressed stamped envelope with your submittal.

Entry forms can be downloaded from both the IAPS and PAC websites. If you do not have access to a computer contact June for a mailed copy.

**Deadline: October 10, 2006**

**IAPS Sixth Biennial Catalogue Cover Competition**

The International Association of Pastel Societies (IAPS) announces its Sixth Biennial Catalogue Cover Competition. One winner and up to six finalists will be chosen by juror

Bill Hosner, internationally known artist and recipient of the prestigious IAPS Master Circle Award. The winning painting will represent the IAPS in its 2007 Convention publicity, by being reproduced on the IAPS Convention Catalogue Cover, in Convention advertisements in international magazines, on the IAPS website and in other 2007 Convention publicity. If you are a member of an IAPS Member Society, you are eligible to take advantage of this opportunity! Contact your Society's President or IAPS Representative or go to: [www.pastelinternational.com](http://www.pastelinternational.com) for further information and a prospectus. Good luck!

## Pastel Artists Canada

### Events Calendar 2006 - 2007

May 30	Deadline for entry TPH Campaign.
June 26 to 30	Workshop with Duane at the Dundas Valley School of Art, Dundas, ON.
June 30	Deadline for entry 9th Juried Competition of IAPS.
July 15	11 am to 5 pm - Intake of paintings for the Members Only Show at The Old Chelsea Gallery, Old Chelsea, Quebec.
July 16	Noon to 1 pm PAC Annual General Meeting, Chelsea, Que.
July 16	2 to 5 pm Opening of the Members Only Show, The Old Chelsea Gallery, Old Chelsea, Que.
July 31	Slide Deadline PAC 15th Annual Open Juried Exhibition "Purely Pastel".
August 17	Pick up painting from Members Only Show
August 26	Paint-out at the Britannia Heritage Shipyard., Steveston, BC. 9:30 am to 4 pm.
August 27	Paint-out at the Gulf of Georgia Cannery, Steveston, BC. 11 am to 5 pm.
August 30	Deadline for entry IAPS Logo Design Competition.
October 1	Notice of acceptance into "Purely Pastel".
October 10	Deadline for entry IAPS Sixth Biennial Catalogue Cover Competition.
November 11 to January 7, 2007	"Purely Pastel" at the Art Gallery of Hamilton.

This Newsletter was printed by:

**OniTECH.CA**

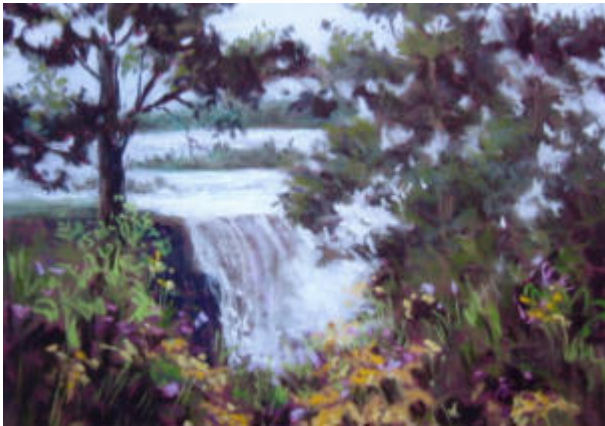
YOUR IMAGE IS OUR BUSINESS

Phone: 519-372-0183

Email: [INFO@ONITECH.CA](mailto:INFO@ONITECH.CA)

Website: [ONITECH.CA](http://ONITECH.CA)

*More new works from the  
PAC Online Gallery  
www.pastelartists.com*



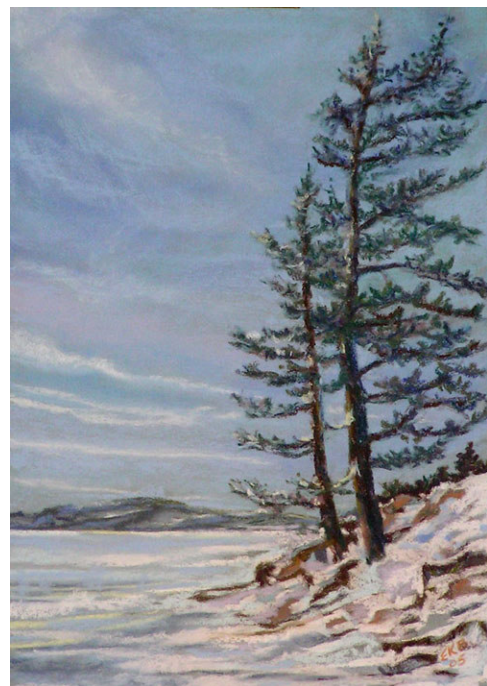
*Niagara through the trees*  
**Barbara Elmslie**



*Upstream*  
**Cathy Cullis**



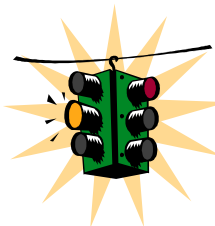
*River Motion*  
**Ann Kelly Walsh**



*Against the Wind*  
**Elsa Black**



*Spring Clouds*  
**Ursula Reese**



*Next Newsletter*  
Deadline  
August 15, 2006

*Send your  
information on  
shows, workshops,  
paint-outs, tips  
and photos of  
events to:*

**Newsletter Editor:**  
**June Gauthier**  
**Pastel Artists Canada**  
**R.R. #3**  
**Flesherton, ON. N0C 1E0**  
**Email: newsletter@pastelartists.com**  
**Tel: 519-924-2202**