



Pastel Artists Canada
“Purely Pastel”

www.pastelartists.com

Member of IAPS www.pastelinternational.com

Autumn Newsletter, August 2005

Congratulations



Approaching Change, Bert Huizinga



Northern Swamp, Bert Huizinga



Wonders of Spring, Bert Huizinga

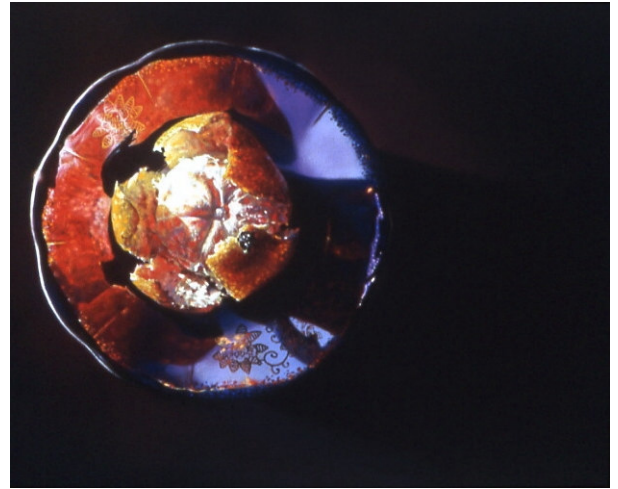
to
**Bert
Huizinga**

&

**Dianna
Ponting**

Our

**2005
Master
Pastellists**



Orange Blossom, Dianna Ponting



Bright Lights, Dianna Ponting



La Class de Danse, Dianna Ponting

Pastel Artists Canada - Purely Pastel Autumn Issue, 2005

Pastel Artists Canada

www.pastelartists.com

History

The Pastel Artists Canada was founded in 1989 by a small group of artists in the Burlington area. Its membership has since grown to 200 artists. Known previously as Pastel Artists of Ontario, Canada, the name was changed May of 2003 to reflect our diverse membership.

Purpose

To promote public appreciation of Art in Soft Pastel and to improve the skills of artists working in this fine art medium.

- PAC sponsors workshops led by well-known International Instructors plus our own teachers.
- Our Newsletter "Purely Pastel" is issued quarterly and has a lively exchange of information with international Pastel Societies. It is now available via our web site to members.
- PAC Members automatically become part of the International Association of Pastel Societies and may participate in IAPS Biennial Convention. As well as participation in PAC's own Member Shows and Juried Shows, members may participate in the Shows of the Pastel Society of Eastern Canada, in Quebec.
- Participation in the PAC Members Show is open to all members for a small fee.
- Signature Society - Granted to members who have been accepted in 3 PAC juried shows.
- Participation on our PAC Website for a small fee.
- Master Pastellist Signature Category MPAC.

Membership in PAC is open to all who are interested in the medium of Pastel.

The membership is based on the calendar year and is due each January. New members joining September 1, will receive membership for the current year and the following year.

Membership Fee: \$40 @ year
Outside Canada Fee: \$55 Cdn. @ year
Pastel Artists Canada
RR3
Flesherton, ON N0C 1E0

PAC Contacts

Rosemary Simpson, Milton Tel: 905-335-8074
President, Director of Web Services
president@pastelartists.com Fax: 905-335-7482

Ursula Reese, Cookstown Tel: 705-731-0288
Past President
ursula.reese@pastelartists.com

Tim Daniels, Burlington Tel: 905-632-1978
2nd Vice President tim@pastelartists.com
Administration of Web Participants

Ann Kelly Walsh, Burlington Tel: 905-336-0993
Secretary secretary@pastelartists.com

Janet Parker, Dundas Tel: 905-627-0222
Treasurer janet@pastelartists.com

Cindy Riach, Dundas Tel: 905-627-5747
Membership membership@pastelartists.com

June Gauthier, Flesherton Tel: 519-924-2202
Newsletter Editor newsletter@pastelartists.com

Lynne Ritchie, Toronto Tel: 416-604-3315
Publicity lynne@pastelartists.com

Maureen Dorinda, Port Perry Tel: 905-982-1118
Society Record Keeper maureen@pastelartists.com

Mette Baker, Dunrobin Tel: 613-832-3737
Area Rep, Ottawa & Area mette@pastelartists.com

Vicki Brophhey, Guelph Tel: 519-822-8603
Area Rep. South Ontario vicki@pastelartists.com

Eldora Taylor, Meaford Tel: 519-538-5181
Area Rep, Mid-West ON eldora@pastelartists.com

Inak Gieysztor, Montreal Tel: 514-939-4321
Area Rep. Quebec inak@pastelartists.com

Brittani Faulkes, Richmond, BC Tel: 604-272-8909
Area Rep. West Canada brittani@pastelartists.com

Barry Richman, Grand Bend Tel: 519-238-6213
Director-at-large barry@pastelartists.com

Sally Jackson, Oakville Tel: 905-844-0207
Master Pastellist Chair sally@pastelartists.com

PAC Canada Web Site:

Members of PAC may join the Online Artists on our site. Participants must be current members of PAC and pay a Web renewal fee of only \$50 per year, (this includes 5 prepaid images that must be used in the current year) due June 1 of each year.

Those participants who join January of the current year are exempt the June renewal fee. The site functions as an art portfolio for the participants and news central for PAC. Since it works as a co-op, the posting of artist bio and work is very economical.

The site has the latest workshop registration forms for download and back issues of the newsletter.



*From the
President's Easel*

MPAC

We have two more members who are entitled to put
MPAC after their names.

Congratulations

**to
Bert Huizinga and Dianna Ponting
our 2005
Master Pastellists**

Lots of exciting news in this issue. Check out the paint-outs that our members are hosting in their area and do take advantage of them. This is an exceptional summer and despite the heat and bugs, etc., we have lots of plein air enthusiasts. Read about what was discussed at the Annual General Meeting and the wonderful opening of our Members Show. Do not miss the two day workshop with our own Aili Kurtis, October 1 and 2 in the Ottawa area. The colours will be fantastic. **Note there has been a change in where you send your registration.**

A big thank you to the 41 members that participated in the 2006 Commemorative Calendar Competition. We had enough material for 4 calendars! The work was fabulous. The jury committee spent 3 hours plus in deliberation and pencil chewing. The work had to have high artistic merit and be suitable for printing. The selected images had to come together as a publication. Many thanks to the Jury Committee and the observers who looked after all the tabulations.

Unfortunately, any slides that did not fit the calendar format had to be rejected immediately, as were any slides that were not in focus, over or under exposed or scratched. Some wonderful work had to be cut due to the quality of the slides. In many ways it was tougher to make the final cut than it is for a juried show.

The Jury whittled the selection down to 17 works out of 100 but the printer was the final judge. With an eye to the quality of the slide for printing, general printability, (some colours do not print well) and a good mix for the publication, he selected 13 spectacular works representing different genera, techniques and styles. Congratulations to the 13 artists.

I hope you are all busy preparing and mailing in your slides for our 14th Annual Open Juried Show. The deadline is August 10, 2005.

Enjoy the summer and keep cool.
Rosemary

(To keep the mystery a little longer, the names of the 13 artists has been printed on page 10.)

The cover of this newsletter showcases a few paintings from their portfolios.

These are the qualities that stood out:

Bert: "Paintings filled with joy."
"Unique style and personal vision, bold and exciting colour, strong work that conveys conviction and clarity."
"Confident and technically adept mark-making that fits style and subject."

Dianna: "Exquisite work! Content, craft, emotion - it's all there."
"Great composition, thought-provoking images, perfectly executed."
"Very strong control of the medium, very good observation of detail and representation."

**Joy - personal vision - adept mark-making -
content - emotion - thought-provoking - control
of the medium - observation**

Let's remember these words as we approach our own work!

We had eleven applicants this year, and as the judges reviewed the slide portfolios, which they projected five or six times each, they made a critique of each one. More information from these critiques will be printed in the Winter Newsletter in preparation for next year's call for entry into Master Pastel Artists Canada.

Sally Jackson
MPAC Chair

Membership Report - Cindy Riach

If you have any questions about membership please contact:

Cindy Riach
PAC Membership
97 Robinhood Drive
Dundas, ON
L9H 4G2

Tel: 905-627-5747 Email: membership@pastelartists.com

Membership In **PAC** is open to all who are interested in the medium of pastel. Membership is based on the calendar year and is due each January. New members joining after September 1st will receive membership for the current and following year. The annual fee is \$40, outside Canada \$55 Cdn.

A warm welcome to our new member:

Sheri Landells, Calgary, AB

You will find enclosed in this newsletter your personal PAC membership list. PAC does not share this information with any outside organization, however, each year we print and distribute the list to all of our members with the understanding that it is for their private use only. It is not to be used as an advertising or sales tool, it is purely a communication instrument to be used between PAC members only. Please check if your information on the list is correct and up to date.

Reminder: The deadline for slides for the PAC 14th Open Juried Show is to be post-marked no later than August 10th, 2005.

Our juror for the exhibition, Catherine Gibbon, has done much thinking and research for us re the Abstract Category that is being offered for the first time due to a generous donor. We thank Catherine for the following information:

“Abstract and representational art can best be understood as separate realms on a slide scale. There is no definite point where one category begins or ends. Unlike representational art which visualizes recognizable objects in pictorial space, abstract art presents a significant diversion from a recognizable illusion. Like a musical variation on a theme, abstract art is created through improvisation. It can distort, exaggerate, elaborate or translate elements of its real or imagined subject and thereby expand the interpretation of the work into the realm of the imagination. Although the degree of abstraction can vary, in the final analysis, I think of an abstract work as being primarily evocative rather than descriptive. Like all other forms of painting, abstract art relies on the formal elements of imagery, composition, tone, colour and use of materials, to create an expressive whole.”

(See more about Catherine on page 7)



Visitors to the Opening of the Pastel Artists Canada Members Show on June 4, 2005, at the Blue Mountain Foundation for the Arts Gallery in Collingwood, Ontario

The Blue Mountain Foundation for the Arts Gallery were wonderful hosts. The exhibition was beautifully hung by their volunteers. Our Opening was a hit with wonderful food and punch, as well as a feast for the eyes.

Many thanks to Coordinator, Eldora Taylor for all her work and organization. The show was well advertised in two local magazines and area newspapers. Eldora did a spot on local cable and is now a TV personality. As with all our events many hands smoothed the way to success.



Thank you, Karin Meilinger, Sheila Bannan, and Joyce Zuckerman, our reception committee, who planned, prepared and laid out the buffet. A special thank you to Joyce's husband, Harold, punch-maker extraordinaire.

In general, the picking up of work at the end of the show went smoothly but there could be some improvement. If you cannot be there in person to pick up your work contact the gallery and make arrangements in advance with your representative to pick up your work in a timely fashion. The day

Pastel Artists Canada - Purely Pastel Autumn Issue, 2005

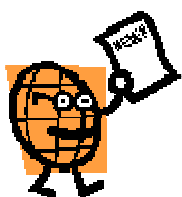
before or the day of pick-up is not enough notice. Also, be sure to inform the PAC coordinator. The coordinator, committee members and the galleries put a lot of effort into making our shows a success, all we ask is that you make arrangements for pick-up of your own painting.

The Publisher of the Pastel Journal has been very kind to us. They provided 4 prizes. On painting pick-up day, all the entrants names were put in a hat and one of the gallery volunteers selected 4 names. Congratulations to Mary Douglas who receives a one year subscription to *The Pastel Journal*, Christine Edwards, a one year subscription to *The Artists's Magazine*, Denise Leman, a certificate worth \$100 US of fine art books from North Light Books and finally Karen Leslie Hall who won a cheque for \$100 US.

What a wonderful surprise and our many thanks to F&W Publications for their continued support.



Joyce with husband Harold, who made the delicious punch.



Member News

If you were unable to attend the **PAC Annual General Meeting on June 4, 2005** you may not know that lots of exciting things are in the works.

PAC's 15th Open Annual Juried Show will be held in the Hamilton Art Gallery in October or November, 2006. The **First Prize for this Anniversary Show has been raised to \$1000.**

We hope too, that the **16th Open Annual Juried Show** will be in British Columbia at the **Federation of Canadian Arts**, thanks to the efforts of Brittani Faulkes. There will have to be a lot of planning for this event. Everyone at the meeting said they would be there.

For **PAC's 15th Anniversary** we are thinking of having a **Founders Juried Show**. Something a little different. We have in mind a Web Show so all may participate despite the distance. The show will be to honour our founders and an award will be presented in the name of each founder. We are also planning a **Summer 2006 dinner**. We do not get together very often and our Anniversary year seems a good time to do it.

Duane Wakeham has agreed to be our guest instructor for a 5 day workshop in Dundas, Ontario, the last week of June 2006

The **PAC Commemorative Calendar** will be published and for sale in September 2005. More on the Calendar on page 10.

Juri Ustohal has been very busy. He had a small painting accepted into the **Third Edition Internationale d'Art Miniature** held in Levis, Quebec. Two paintings in the **80th Anniversary Exhibition** at the **Roberts Gallery** in Toronto, June 14 to July 15, 2005 and two prints in **The Little Prints Show** at the **John Baird Gallery** on Bay Street in Toronto, June 28 to July 22, 2005.

It has also been a busy Spring for **Stephanie Wellman**. She won a trophy at the **Ottawa Art Association Spring Awards Show** for Best Pastel. First place for pastel and an Honourable mention overall at the **Bancroft Art Gallery**. She also won an Award of Merit for her painting, *Morning Haze*, in **The Broken Fence Society's 2005 Juried Environmental Art Show** which took place in Toronto, April 12 to 30, 2005. Stephanie was exhibiting at the Bon Echo 10th Annual Art Show and Exhibition, July 22 to 24, 2005 and she now has a show hanging in the **Roasted Cherry Café** in Ottawa until the middle of August.

Congratulations **Bert Huizinga**. Bert, along with twenty-eight other people, only seven of whom were from Ontario, received The Governor General's Caring Canada Award. This award is presented to individuals and groups whose unpaid voluntary contributions provide extraordinary help or care to people in the community. The awards were presented by Right Honourable Adrienne Clarkson on April 18, 2005. Bert says "We were also given a tour of Rideau Hill, the Governor General's Residence. I was very impressed with the many paintings on display, which are rotated with the National Gallery or Canada."

In the last newsletter, I mentioned that **PAC** was going to be well represented in the **PSEC, International Exhibition** in Montreal. Imagine my surprise when I attended the Opening Reception and found along with **Cathy Cullis, Louise P. Rouleau** and **Ann Walsh**, there were five other PAC members with paintings in the show. **Normand Baril**, *Stream Movement II*, **Barbara Elmslie**, *Park Colour*, **Viviane Martin-Roman**, *Rue St-Charles*, **Gail Sibley**, *Boat Shed* and **Stephanie Wellman**, *The Tanker*. With her entry into the exhibition this year **Ann Walsh** achieved signature status in **PSEC**. Congratulations all! Great work.

Sally Jackson's painting Rock Painting #10 was accepted into the **Oakville Arts Council Juried Show** which ran until May 6, 2005. It has now been accepted into **Insight 26th, Juried Art Show 2005**, June 22 to September 5 at the Wellington County Museum and Archives, located between Elora and Fergus, Ontario. A painting by Vicki Brophy was also accepted into the show.

Waltraud (Trudi) Bluml's painting, *Fox on the Run*, was one of fifty paintings accepted into **The Pastel Painters of Maine 6th Annual International Juried Show**. The show was held at the River Tree Centre for the Arts, Kennebank, Maine, June 2 to 3, 2005.

Ursula Reese will be taking part in an exhibition at the new **Club at Bond Head Gallery** from July 26 to September 25, 2005. Opening reception, August 21, 2005, 11 am to 3 pm. **The Art Night at the Club** with wine, hors d'oeuvres and a presentation, *A Life in the Arts - Tricks of the Trade* will be held on August 11, 7 to 9:30 pm. For more information: Linda@lindamackey.com or phone 1-877-Gran-4U.

Rosemary Simpson was asked by the **City of Burlington** and the local **Rotary Club** to create an Environmental Award to be awarded each year to the person who has made a significant contribution in the Halton, Ontario area. Rosemary said, "It was an honour to have my work in pastel selected to be part of the plaque which will hang in the City Hall. It was also a pleasure to work with the committee in the creation of the plaque." Each year the recipient of the award will receive one of Rosemary's paintings and their name placed on the plaque. This year the recipient work was called, *Fall Marsh Crawford Lake*.

Glenn Bernabe took part in **Artists at Work** held on the grounds of the **McMichael Gallery** in Kleinberg, Ontario, Sunday, July 24, 2005. The York Region Artists worked on projects of their choice and answered the questions of the gallery visitors.

Fifteen artists including **Barb Harris** and **June Gauthier** took part in the **6th Annual Ice Cream Festival and Art Show** held in Markdale, Ontario, July 29-30, 2005.

Richard (Dick) Griffin

We were saddened to learn of the sudden death of long time PAC member Richard (Dick Griffin), on April 15, at his home in Toronto. He was in his 80th year. Following his training in the Art Students League in New York, Dick had a very successful career in the advertising business with Trans Ad. The Canadian outdoors and painting were his passion and he retired happily to the Haliburton area where he canoed and painted for many years. Pastel and pen and ink were his favourite mediums.

He was a gentle man, who loved his family and a good party. He will be greatly missed.

Paint-outs - Past & Future.....

PAST:

Well Eldora did it again!

Spring 2005 in Ontario was anything but artist friendly. Nevertheless, May 28th, the day of Eldora Taylor's paint out at the **Scenic Caves** came through as sunny and comfortable painting weather. How does she do it every year? Twelve members took advantage of the Scenic Caves Nature Adventures generous offer of free entry to the site. Some took the tractor shuttle up to the suspension bridge and painted the beautiful vista overlooking Georgian Bay, while others painted in the lovely landscaped gardens or on some of the many foot paths. The artists attracted quite a bit of attention from other visitors to the Caves. Thanks Eldora for making all the arrangements. It was a great day.



Eldora Taylor painting at the suspension bridge.

The fourteen **PAC** members who arrived at the **Adventure Lodge in Whitney, Ontario** on Friday, June 17th for the annual weekend paint-out were not quite so lucky weather-wise but never let it be said that gray skies, sprinkling rains, mosquitoes, nor black fly, can hold back a pastel artist from painting en plein air. Although the weather was miserable, the comradery, scenery, accommodations, food and wine were the best and enjoyed by all. Lots of painting talk, lots of laughs and a lot of tired painters in bed early to be ready to paint the next morning.



Bug suits and umbrellas were the fashion statement of the weekend.

Future:

Painting in my garden. Sally Jackson has graciously offered her beautiful garden in Oakville, Ontario for a paint-out on **Saturday, August 20, 2005**, and with the changing of the season she is willing to open it again in **October on the Thanksgiving weekend**. The day to be decided on by popular demand. Please contact Sally at: sally@jackson.to or by phone: 905-844-0207 if you are interested in either date or both.

IPAP's (International Plein Air Painters) **Worldwide Paint Out**, September 9 - 10, 2005, Niagara Falls, Ontario. You do not have to be a member of IPAP to participate. Painting will be done in specified Niagara Parks locations and the public will be invited to watch the artists developing their paintings. Paintings will be juried once the paint-out is over. A display and Awards Ceremony will follow at the **Tu Tu Tango Gallery**. Best of Show Award: \$2000 US value. The artist will receive a 1/2 page ad in the new **International Plein Air Magazine**. For more information contact: J. Baldini at 905-354-8692, Monday to Friday, 9 am to 5 pm. or a complete prospectus can be seen at www.I-P-A-P.com.

Phyllis Ross and Rosalie Daly Todd have scouted around for spots to paint and accommodations in the beautiful town of Wakefield, Quebec for a paint-out and here is what they have come up with. **The paint-out would be September 26 to 29, 2005**. The plans are to arrive on Monday, September 26th and paint that afternoon and the next two days, returning home on Thursday, September 29th. If you would like to join the group, please contact Phyllis at www.pjross@magma.ca or 613-523-0286 to let her know you will there. You will have to make your own arrangements for accommodations.

Here are some accommodation choices:

Motel Café Alpengruss (room with double bed - \$70, room with two double beds - \$80.) Restaurant. 819-459-2850.

Les Trois Erables (from \$119 & includes breakfast.) www.lestroiserables.com or 819-459-1118.

La Grange Country Inn (\$80 - \$110 with breakfast, \$100 - \$120 with breakfast and dinner.) www.lagrangebandb.com or 819-459-4411.

Le Moulin Wakefield Mill Hotel (from \$102 with breakfast, from \$115 with breakfast and dinner.) 888-567-1838 or www.wakefieldmill.com.

Be sure to book early because this is a prime spot for enjoying the Fall colours.

Painting with Barbara Elmslie in Harrington, Quebec, October 6, 2005. Contact Barb for more information and directions at 819-687-2790 or email belmslie@sympatico.ca.

Also, **Inak Gieysztor** is planning a painting trip to Gaspé, Quebec for this Autumn. For details see page 5 of the "**Purely Pastel**" Spring, 2005 issue or contact Inak at 514-939-4321, email: janekinag@yahoo.com.

Tip: Art should not be work; it should be fun. If it has become work, stop and do something else for a while..



Sharing Pastel Info....

At the opening of the PAC Member Show in Collingwood on June 4, 2005, Karen Leslie Hall's painting, *Pear Trio*, drew so much viewer attention that we asked if she would share her secret on how she achieved its beautiful texture and shimmering effect. Here is the story behind Karen's painting.

I started this painting when I lived in Bermuda, where I took classes with renowned artist Sharon Wilson. The support we used most often was 140 lb. watercolour paper painted with Art Spectrum ground (we could get the ground by mail-order and buy the paper at the local art supply store, which catered mostly to watercolourists). While it is possible to apply the ground very carefully to get the finish as smooth as possible, I preferred to swish the brush around on the surface to create random brush strokes, which would show through the pastel and give the picture an interesting texture (this is not suitable for all subjects or styles, of course.) I became discouraged with how the painting was going and put it away.

Three years later, back in Canada, I took Sally Jackson's, Pushing the Medium workshop. The painting of the pears popped into my head as a good subject on which to try some of Sally's techniques, so I dug it out and went at it. First I slapped gesso all over it in a random fashion, using the side of a credit card. (I think I mixed a bit of pumice powder into the gesso, but I do not think it made much difference.) When it was dry, I started loosely applying pastel, I sprayed the painting with fixative several times between layers of pastel. The shimmering effect is from Sennelier's iridescent and metallic colours. I just kept going, with as much abandon as I could muster, until the painting, as Sally would say, "sang".

Note: *I had a bit of difficulty with the paper buckling; it was quite wavy when I took it off the drawing board. Perhaps an application of gesso on the back of the paper as well as the front would alleviate this problem. Does anyone out there know?*

(See Karen's before and after painting, *Pear Trio*, on the back cover.)



Cindy Riach

at

Adventure
Lodge



Member Workshops

and

Courses

Rosemary Simpson gave a workshop for the **Fine Art Society of Milton** on June 11 and 12, 2005. The participants in the Introduction to Pastels - Landscape Miniatures Workshop, out did themselves completing 5 miniatures each over the two afternoons. The artists had very little experience with pastels and really enjoyed using the pastels from the PAC kit. The focus was on the difference between hard and soft dry pastels and their uses with 5 different types of papers. They all loved the **Kitti Wallis** paper best with **Sabertooth** and **LaCarte** a close second. Rosemary says "They were a terrific group to work with".



Rosemary and her Landscape Miniatures group.

Sally Jackson and **Ann Walsh** will be teaching at **Visual Arts Mississauga**. Sally's course will be **Pastels and More**, four consecutive Mondays, October 24 to November 14, 2005, 9am to 4pm. The cost \$200 all materials included. Course # PA04. Ann's course will be **Chalk Pastels**, Thursday, October 6 to December 8, 2005, 1 to 4 pm. The cost \$125. Course #PA02. Registration starts August 2, 2005. For more information visit: www.visualartsmississauga.com or call: 905-828-9151.

Margaret Ferraro will be giving the following workshops: **Introduction to Pastel**, a two-day workshop, August 20 and 21, 2005. Cost \$100.

Introduction to Pastel, August 26 to 28, 2005. This three day workshop is offered at Galilee Mission Centre in Arn-prior. Cost \$350 includes food and accommodation.

Adult Open Studio, Fridays, September 9 to November 25, 2005, 9 am to 12 noon. This workshop is offered to adults who ideally haven't taken the Introduction to Pastel workshop. To register, contact Margaret at 613-839-5241 or email: marg.ferraro@sympatico.ca.

PAC Pastel Weekend Workshop with Aili Kurtis, in her personal studio on Pike Lake, Ontario, October 1 & 2, 2005, 9:30 am to 4:30 pm. Brown bag lunch. Coordinator: Mette Baker, phone 613-832-3737, email: mette@pastelartists.com. Price: \$95 for the two days. The deadline for registration is September 10, 2005. **Important: Arrangements for registration have changed from the last newsletter. Please mail or send your registration and cheque to Rosemary Simpson, 3019 Britannia Rd., RR#2, Milton, ON, L9T 2X6.** The location is Aili's spectacular new studio overlooking Pike Lake, Ontario. The studio is an hour's drive from Ottawa and about 12 minutes from the historic towns of Perth and Westport, where there are many charming B&B's and shops.



**Communicating with PAC
Members**

Stephanie Wellman writes: *I would like to thank the PAC members that came and talked to me at my booth at the Toronto Outdoor Exhibition. It is so nice to finally meet people.*

Trudi Bluml writes: *I am a member of the Old Deerfield Painting Group and we hold our annual show in Historic Deerfield, Massachusetts. This village is similar to Sturbridge or Williamsburg, the only difference is that it is not as commercial. It is a sleepy little town in the middle of Massachusetts and has many other historic and natural sites. The information regarding our show is as follows: The Old Deerfield Painting Group Presents the 16th Annual Exhibition of Paintings in The White Church Community Center, Memorial Street, Old Deerfield, Massachusetts from August 20 to August 28, 2005, 12 pm to 5 pm., Wednesdays and Fridays until 7 pm. Opening reception is on Sunday, August 21 from 2 pm to 5 pm. If you are in the Deerfield area I hope you will take the time to see our show.*

When **Stephanie Wellman** mentioned she had won an Award of Merit in the Broken Fence Society's 2005 Juried Environment Art Show, I was intrigued by the Society's name and wanted to find out more about it. The **Broken Fence Society** was founded in 1994 and has grown into a group of over 30 artists. Their mandate is to address the increasing concerns about global environmental devastation. Their Annual Juried Environment Art Shows are being held in increasingly larger venues to accommodate the demand. This year's show was held in Toronto, April 12 to 30, 2005. If you are as intrigued as I was, go to their website and read more about them. www.brokenfence.org.
June

The Juror for the PAC 14th Annual Opening Juried Show is Artist/Instructor/Author, Catherine Gibbon.

Catherine is a well known and collected Canadian artist.

Catherine lives in Dundas, Ontario where she teaches at the **Dundas Valley School of Art**. As an advocate of cultural and environmental concerns, she is a founding member of the **Carnegie Gallery**, Dundas, the **Broadway Cinema Gallery**, Hamilton and the **On The Edge Art/Enviornment project**. She has also worked as an editor and writer of *On the Edge: Artistic Visions of A Shrinking Landscape* published by Boston Mills Press. Her art concentrates on aspects of nature and its relationship to human culture.

Her work is exhibited regularly and has been shown throughout Canada, where it is represented in a number of public and private collections. Upcoming exhibitions for 2006 and 2007 are scheduled at the Carnegie Gallery, Dundas, Gallery on the Bay, Hamilton and two public gallery exhibits one in Whitehorse, Yukon, and the other in Prince George, British Columbia.

Thank you to those members who have taken the time to send in their annual website fee. Remember that we owe you a free image posting for your prompt renewal. This offer is still open to those who renew by September 1, 2005.

I would also want to remind web participants to make use of the **member notices** feature that is available to everyone. It is very easy to use; go to Members Only and follow the prompts.



Wilma Alexander decided she was not going to be mosquitoes or black fly bait and painted the scenery from inside Adventure Lodge.



PAC Online

www.pastelartists.com

Tim Daniels

Since the previous issue of the newsletter we have added a new member to the website. **Waltraud (Trudi) Bluml** from Winchester, New Hampshire has studied with a number of instructors including Urani Christy Tarbet and Tony Van Hasselt. She enjoys working in the studio and plein aire. Examples of her work can be seen at www.pastelartists.com. We encourage and welcome new participants.

Recently, I was speaking with **Stephanie Wellman** and she mentioned that her work is now being carried by a California gallery that saw her work on our website. Her painting, *Red Sirens* was in our PAC 2004 Member Show, May 1 to June 24, 2004 and it appeared on our website.

If you are interested in joining the website, you can download an application form from the website, use the form in the last issue of the newsletter or contact me. I would be happy to help you with any questions you might have about photographing your work, emailing images or any other technical problem.

Call for Submissions.....

Green Venture invites you to participate in the **2005-2006 EcoHouse Art Exhibition series**. Green Venture is uniting the earth and the arts to raise awareness, inspire action and support local creativity. We are looking for visual artists to submit a proposal to display their work for 1-2 months at EcoHouse beginning in October 2005 through September 2006 (group and solo exhibitions). The submission should preferably explore environment issues through medium and/or content. Special interest for works addressing waste reduction and awareness. Accepting paintings, drawings, prints and photos. Maximum of 15 pieces (depending upon size) can be displayed. A small fee of 10% will be deducted on any pieces sold to help cover maintenance costs of EcoHouse. Proposal details are available at: <http://www.greenventure.ca/gv.asp?ID=185>. Submission deadline for our October exhibition is Friday, September 9, 2005. Whether beginner or veteran, we invite you to take part. For more information and to send a standard exhibition proposal contact: EcoHouse, c/o Art Coordinator, 22 Veevers Dr., Hamilton, ON L8K 5P5 or phone 905-540-8787 ext.17 or email: contact@greenventure.ca.

The work of the following 13 artists will be in the 2006 PAC Commemorative Calendar

Tim Daniels	Denise Leman
Kelly Dodge	Julia Lucich
Brittani Faulkes	Eileen Oswald
Karen Hall	Diana Philpott
Bert Huizinga	Cindy Riach
Aili Kurtis	Gail Sibley
Ann Walsh	

Congratulations to all!

OniTECH.CA is giving a calendar to each of the artists above.



Artist and admiring visitors at the Scenic Caves.

The **PAC 2006 Commemorative Calendar** will be ready for sale in September 2005. We need the help of the PAC members in finding places that would be interested in selling the calendar. We are thinking of places such as commercial and public art galleries, art supply stores, places that are frequented by artists and people who enjoy art.

Member price will be: \$15 each or 2 for \$25.
(The retail price will be \$20.)

We will be sending out order forms in late August or early September.

When two arts meet:

Poet **Tracy Lynn Repchuk** attended the **Essence of Place Art Exhibition** at the Burlington Art Centre earlier this year, and was inspired to write poems for **Ursula Reese** and **Rosemary Simpson's** paintings that were in the show. She is ecstatic when she can combine the two mediums. Ideally, the poems should be read as one looks at the paintings, so we suggest you fold the back cover to align with poems on this page. If you are interested in having a poem written to your paintings, you can contact her at: tracy@federationofpoets.com.

See Rosemary's painting, *Rock Face, Walker's Line* on the back cover.

**Saber tooth Mist
For Rosemary Simpson**

Spring mornings dance with a brilliance of hope
Graceful connections, as escarpments elope.

Stern rock faces, jagged with shale
Dolomite, limestone for centuries prevail.

Parading clouds thunder above valley and streams
Biodiversity of life fulfills fantasy and dreams.

Swaying arms rustle sounding their fate
Weak leaves gather avoiding the wait.

Autumn erupts with colours so true
Towards winterly slumbers of a crisp tranquil view.

Magenta skies howl, purple splendor ignites
Budding prospects in Spring, new hope invites.

Sultry summer hues, spontaneous earth
Proliferations the cycles and gives way to rebirth.

On paper it's captured, impressionists crown
Immersed in nature, it dons a new gown.

Change; the only constant in this landscape affair
Connecting with treasures, eternally aware.

See Ursula's painting, *Kiris Hill* on the back cover.

**Absence of Man
For Ursula Reese**

Mountsberg grasses unfurl in the breeze
Tall spindly trees struggle for height
Dramatic view atop a mountain brow
Great blue herons hunt majestically in flight.

Autumn's glory suckles the sky
Parades of magnetic green and potent hues of red
Deep skies of dreams and design
Winter sunsets gaze into nights white bed.

Sumacs breath of fire and fury
Along the mighty Bruce
Winding trails and tranquil diversity
As paths divide among the spruce.

Mans weathered hands pursue urban sprawl
Beauty of nature compromised
Contrasted by challenges between landscape and man
Destined to unite, leaves no one surprised.

Omitted from the cover of the last PAC Cover.

Cathy Cullis entered her painting, *Desert Sentinels*, into the PAC Members Show and had her image in early enough to be on our Summer Newsletter, May 2005 cover along with all the other participants. However, we let it fall through the cracks and it did not get printed. We are now correcting our error. Please see *Desert Sentinels*, on the back cover. Sorry Cathy.



Ann Walsh off on another plein air painting excursion

News from Ann Walsh's plein air course conducted July 18 to 22, 2005.

I spent a great five days with 13 hardy souls in a plein air workshop (or sweatshop, I should say) which was put on under the auspices of the Burlington Art Centre. We spent three days at the Joshua Creek studio on a farm property in Oakville, one day overlooking Hamilton/Burlington Bay from on high and one day at a lakeshore estate in Burlington. PAC member **Jeanne Gravel** spent her time being chased by the sun. It did not matter how deep in the shade she set up, she would soon be bathed in sun. I recommend going on a tropical holiday with Jeanne if you want to be IN the sun. **Cathy Cullis, Meena Dhars** and **Heidi Rohde**, also PAC members, were among the brave group. We were all pretty proud of ourselves that we made it through in good shape.

This Newsletter was printed by:

OniTECH.CA
YOUR IMAGE IS OUR BUSINESS

Phone: 519-372-0183

Email: INFO@ONITECH.CA

Website: ONITECH.CA

Calendar of Events - 2005

- August 10** - Deadline for entry into *Purely Pastel* 14th Annual Open Juried Show.
- August 20** - Paint-out in Sally Jackson's garden.
- September 9-10** - IPAP, The Worldwide Paint Out, Niagara Falls, Ontario.
- September 10** - Deadline for registration into A Pastel weekend Workshop with Aili Kurtis at Pike Lake, Ontario.
- September 26 to 28** - Paint-out Wakefield, Quebec.
- October 1 to 2** - A Pastel weekend Workshop with Aili Kurtis.
- October 6** - Paint-out in Harrington, Quebec
- November 21** - Paintings accepted into the *"Purely Pastel"* 14th Annual Open Juried Show must be delivered to The Living Art Centre, Mississauga, Ontario prior to 4:30 pm.
- November 25/05 to January 22/06** - *"Purely Pastel"* 14th Annual Juried Show.
- December 1** - Opening Reception - 7 to 9 pm. *"Purely Pastel"* 14th Annual Open Juried Show. in the Living Art Centre, Mississauga, Ontario



Rosemary Simpson with the Environment Award she helped create for the City of Burlington and the local Rotary Club.

See when two arts meet - Poems by
Tracy Lynn Repchuk
(page 10)



Spring Morning, Mt. Nemo, Rosemary Simpson



Kiris Hill, Ursula Reese



Fast Waters, Dick Griffin

This painting was in the 11th PAC
Annual Open Juried Show

(See page 6 for tribute to Dick)



Desert Sentinels, Cathy Cullis

(See **Omitted** on page 11)



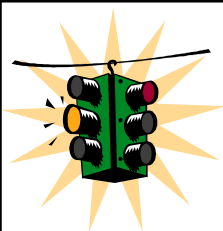
Before

After

(See page *Sharing Pastel Info* - page 7)



Last of the Boats, Inak Gieysztor,



Next Newsletter

Deadline
October 15, 2005

Send your
information on
shows, workshops,
paint-outs, tips
and photos of
events to:

Newsletter Editor:
June Gauthier
Pastel Artists Canada
R.R. #3
Flesherton, ON. N0C 1E0

Tel. 519-924-2202
email:newsletter@pastelartists.com