



# Pastel Artists. Ca

## *“Purely Pastel”*

[www.pastelartists.com](http://www.pastelartists.com)

Member of IAPS [www.pastelinternational.com](http://www.pastelinternational.com)

Autumn Newsletter, August 2008

### *Congratulations, Prize Winners in the PAC 17th Annual Open Juried Exhibition “Purely Pastel”*



**\$1,000 Ursula Reese Grand Prize**  
Glenn Bernabe, PAC - *Laundromat*



**Jack Richeson & Co., Unison Pastel Award**  
Stephanie Wellman, PAC, MPAC - *Buick Eight*



**Terry Ludwig Pastels Award I**  
Dianna Ponting, PAC, MPAC  
*Mandarins in Cello Packets*



**Rtistx Art Board Award**  
Karen Leslie Hall, PAC - *Bottoms Up*

## *Pastel Artists.Ca - Purely Pastel Autumn Issue, 2008*

**Pastel Artists.Ca** was founded in 1989. First known as Pastel Artists of Ontario, Canada, the name was changed in May of 2003 to Pastel Artists Canada. In August, 2007 it was incorporated under its present name, Pastel Artists.Ca., still expressed as Pastel Artists Canada.

**Our purpose** is to promote public appreciation of Dry Pastel and to improve the skills of artists working in this Fine Art medium.

To this end, we sponsor workshops led by well-known international instructors and our own experienced teachers. We maintain a website, [www.pastelartists.com](http://www.pastelartists.com) and publish a colourful quarterly Newsletter "*Purely Pastel*". Both are well stocked with member news, information about pastels and opportunities available to pastel artists.

Membership in PAC is open to all who are interested in the medium of Dry Pastel.

### **Membership in PAC entitles you to:**

- receive the quarterly Newsletter by mail and on the Members Only portion of the website; for a small fee, participate in the Online Gallery of the website and post your own events;
- participate in the annual Members' Show (with entry fee), reduced entry fee to workshops and the Annual Open Juried Show, "*Purely Pastel*";
- the signatures PAC and MPAC (Master Pastellist) upon qualification;
- reduced entry fee to the Pastel Society of Eastern Canada (PSEC) Juried Show and workshops;
- membership in the International Association of Pastel Societies and participation in IAPS competitions and Biennial Convention (the next is 2009).

Membership is based on the calendar year and renewal is due on January 1. New members joining after September 1, will have the following calendar year included with the initial membership fee.

Annual Membership	\$40 CAD
Outside Canada	\$50 CAD

### **PAC Contacts**

**Sally Jackson, PAC, Oakville** Tel: 905-844-0207  
Director, President [sally@pastelartists.com](mailto:sally@pastelartists.com)

**Rosemary Simpson, PAC, Milton** Tel: 905-335-8074  
Director, Past-President, Admin- Fax: 905-335-7482  
istrator of Web Service [rsimpson@pastelartists.com](mailto:rsimpson@pastelartists.com)

**Heidi Rohde, PAC, Burlington** Tel: 905-335-9866  
Director, Vice President & [heidi@pastelartists.com](mailto:heidi@pastelartists.com)  
Workshop Coordinator

**Lynne Ritchie, Toronto** Tel: 416-604-3315  
Director, Secretary & Publicity [lynne@pastelartists.com](mailto:lynne@pastelartists.com)

**Philip Allanson, Flesherton** Tel: 519-924-2202  
Treasurer [allanson@bmts.com](mailto:allanson@bmts.com)

**Barb Harris, PAC, Flesherton** Tel: 519-924-3792  
Membership [barbh@pastelartists.com](mailto:barbh@pastelartists.com)

**June Gauthier, PAC, Flesherton** Tel: 519-924-2202  
Director, Newsletter Editor [newsletter@pastelartists.com](mailto:newsletter@pastelartists.com)

**Cathy Cullis, PAC, Burlington** Tel: 905-333-6509  
Publications [cathy@pastelartists.com](mailto:cathy@pastelartists.com)

**Maureen Dorinda, PAC, Port Perry** Tel: 905-982-1118  
Master Pastellist Chair [maureen@pastelartists.com](mailto:maureen@pastelartists.com)

### **Area Representatives**

**Mette Baker, Dunrobin** Tel: 613-832-3737  
Director, Ottawa & Area [mette@pastelartists.com](mailto:mette@pastelartists.com)

**Vicki Brophay, PAC, Guelph** Tel: 519-822-8603  
Southern Ontario [vicki@pastelartists.com](mailto:vicki@pastelartists.com)

**Eldora Taylor, PAC, Meaford** Tel: 519-538-5181  
Mid-Western Ontario [eldora@pastelartists.com](mailto:eldora@pastelartists.com)

**Ina K. Gieysztor, PAC, Montreal** Tel: 514-939-4321  
Quebec [inak@pastelartists.com](mailto:inak@pastelartists.com)

**Brittani Faulkes, PAC, Richmond** Tel: 604-916-0458  
Western Canada [brittani@pastelartists.com](mailto:brittani@pastelartists.com)

**Pastel Artists.Ca**  
**PO Box 351**  
**Flesherton, ON**  
**N0C 1E0**

[www.pastelartists.com](http://www.pastelartists.com)



## From the President's Easel

We have a lot to sing about this month...

**The 17th Annual Open Juried Exhibition** has just opened at the Art Gallery of Hamilton and it is a terrific show. Our thanks to the 84 artists who entered, the coordinator Janet Parker, the registration team of Jessie Grant and Rosemary Simpson, and the outstanding Juror, Dawn White Beatty, who could choose only 50 paintings out of the record number of 210 entries, and then travelled down from Temagami to select the awards.

**Congratulations!** to **Glenn Bernabe**, whose painting *Laundromat* won the Ursula Reese Grand Prize, and to the other award-winning artists in the Exhibition. Some of these beautiful and interesting paintings are featured on the front of this newsletter.

**Congratulations!** to Karin Richter and Michael Chesley Johnson, our 2008 Master Pastellists. Sadly, living in Alberta (Karin) and New Brunswick (Michael), neither of them were able to attend the Juried Exhibition Reception to receive their pins and certificates personally.

**Congratulations!** to our three new PAC signature members: Christina Edwards, Heidi Rohde and Karin Richter, who have now had their paintings accepted into three PAC juried shows.

**News:** Since the Symposium in Burlington in April, we have turned our attention to other parts of the country, so you will find news from BC, Alberta, western Ontario, Toronto, and east of Toronto, and activities in those places which might interest you, in this newsletter. June is making a section for news and activities around the country a permanent fixture and all are welcome to contribute to it.

You may start hearing from a PAC member near you who has agreed to pass on interesting information (New supplier! Exhibition opening!). If you know about relatively local opportunities or activities, perhaps happening very soon, tell us and we will help get the word out in time.

**Joe Plaskett**, whose lifetime of superb pastel work was the subject of **Spotlight** last newsletter, has 90th birthday celebration exhibitions opening simultaneously at the Bau-Xi Galleries in Toronto and Vancouver, September 6 to 20th. There will be receptions with the artist present for the opening in Vancouver on the 6th and the closing in Toronto on the 20th. Attending the exhibition and signing the visitors' book is one way you can make PAC's existence felt, however discreetly...

### **And now about money:**

For the past several years we have been able to take

advantage of a large financial cushion that was carefully built up, but that can't go on forever and it is slowly eroding. PAC underwrites, and your fees pay for, benefits to all members or to the organization as a whole (e.g. meetings, newsletter, web site, other communications) and members pay for activities or services that are a benefit to them individually but still administered by PAC (e.g. web site galleries, workshops, show registration fees). We now have proper insurance for PAC-sponsored events and activities, and directors' insurance so that your directors are not personally liable if someone has a mind to sue the organization. After holding the membership fee \$40 since 2005, we believe that we will have to raise the fee at the coming AGM.

The EC has already approved an increase in Web Site fees and Rosemary Simpson gives you the details in the PAC Online column in this issue.

Also, there are things we could afford to do for you before, that we can't now - the **Juried Exhibition Catalogue** for example. This full-colour book represents PAC and the skills of our artists very well. In the past it has been sent free to the artists in the Exhibition and available below cost at opening receptions. Many of you have never seen it. Sales at receptions brought in about \$60, but we pay over \$600 to the printer and a lot of postage to send it to the artists; this comes out of your fees. Now it is available to everyone for \$7.50, the cost of printing it, and your fees pay for the copies we proudly send to our sponsors when we thank them for their support, or to galleries as part of exhibition proposals.

**Annual General Meeting:** Our AGM will be on Sunday, November 2, 2008, at Neilson Park Creative Centre and the Directors and Executive Committee look forward to seeing many of you then. It will be good to gather together again as we did last year, with an interesting program and lots of social time to complement the business of the meeting itself.

Sally

### **PAC 17th Open Annual Exhibition is a dazzler! Catalogue available!**

We hope that many of you will be able to visit the Art Gallery of Hamilton in person between August 9 & September 21, 2008. **Now for the first time, the Exhibition Catalogue will be available to all, for \$7.50** and can be bought at the opening reception. If you cannot get to the Reception, the Catalogue can be ordered from Ann Oakley, PAC, at 905-338-1635, 270 Robinson St, Oakville, L6J 1G6, or via Sarah Rochon's email [saraharochon@cogeco.ca](mailto:saraharochon@cogeco.ca). You can pick up one from Ann or one could be mailed to you. A mailing and supplies fee of \$1.50 will be charged. Please make a cheque for \$9.00 payable to **Pastel Artists.Ca** and mail it to Pastel Artists.Ca, P.O. Box 351, Flesherton, ON. N0C 1E0



## Congratulations!

### Prize winners in the 17th Annual Open Juried Exhibition.

Awards funded by PAC or by a PAC member:

**\$1,000 Ursula Reese Grand Prize**

Glenn Bernabe, PAC - *Laundromat*

**\$300 Abstract Award (Anonymous)**

Valerie Ashton, PAC - *Abstract Wine*

Awards from sponsors:

**Jack Richeson & Co. Unison Pastel Award**

Stephanie Wellman, PAC, MPAC - *Buick Eight*

**Terry Ludwig Pastels Award I**

Dianna Ponting, PAC, MPAC - *Mandarins in Cello Packets*

**Rtistx Art Board Award**

Karen Leslie Hall, PAC - *Bottoms Up*

**Terry Ludwig Pastels Award II**

David Xu - *Agata*

**Jack Richeson & Co. Gatorboard Award**

Diana Blazek - *Tree Climber Series:*

*Enchantress, Enchanted, Enraptured*

**PanPastels Colors Award**

Cheryl Roller - *Exploring Meares Island*

**F+W Publications Subscription Awards**

Evelyn Gracey, PAC - *Serenity*

Sally Jackson, PAC - *Lace*

Stephanie Wellman, PAC, MPAC - *Fractured Reflections*

Ruth Rodgers - *Castles in the Air*

**F+W Publications Peoples' Choice Award**

*To be decided at the Opening Reception.*

Kathy Hildebrandt	Calgary, AB	<i>Tea for One</i>
John Huang	Lively, ON	<i>Inco Panorama I</i>
Sally Jackson	Oakville, ON	<i>Lace</i>
Aili Kurtis	Ottawa, ON	<i>The White Leaf</i>
Susan Lampinen	Sudbury, ON	<i>Center Stage</i>
Marc Morais	Burlington, ON	<i>Healing Prayer</i>
Sandra Murphy	Aurora, ON	<i>Between Houses</i>
Carol Nasvytis	Burlington, ON	<i>Happenstance</i>
Robin Sheard Nyikos	Collingwood, ON	<i>Sunset Island</i>
Eileen Oswald	Mississauga, ON	<i>Tulips I</i>
Janet Parker	Dundas, ON	<i>A Slice of Tuscany</i>
David Parson	Peterborough, ON	<i>Lola's Orchid</i>
Sandrine Pelissier	North Vancouver, BC	<i>Autoportrait</i>
Boni Penna	Orleans, ON	<i>Barron Canyon</i>
Sangita Phadke	Colts Neck, NJ	<i>Strawberry</i>
Dianna Ponting	Abbotsford, BC	<i>Mandarins in Cello Packets</i>
Karin Richter	Calgary, AB	<i>Low Light</i>
Ruth Rodgers	Lakeside, ON	<i>Castles in the Air</i>
Heidi Rohde	Burlington, ON	<i>November Solitude</i>
Cheryl Roller	Richmond, BC	<i>Mermaid III</i>
Cheryl Roller	Richmond, BC	<i>Exploring Meares Island</i>
Jennifer Ross	Port Perry, ON	<i>First Light</i>
Gail Sibley	Saltspring Island, BC	<i>September Begins</i>
Cristina Sidhu	Amherst, NS	<i>Done for the Day</i>
Rosemary Simpson	Milton, ON	<i>Escarpment Country</i>
DeVaughn Squire	Medicine Hat, AB	<i>Little Miss Sunshine</i>
DeVaughn Squire	Medicine Hat, AB	<i>I Didn't Get My Pudding</i>
A. Linda VanWyk	Burlington, ON	<i>Ocean Front</i>
Ann Kelly Walsh	Burlington, ON	<i>Current</i>
Stephanie Wellman	Russell, ON	<i>Buick Eight</i>
Stephanie Wellman	Russell, ON	<i>Refined Reflections</i>
David Xu	Toronto, ON	<i>Agata</i>

## Artists and their work

### Pastel Artists.Ca., 17<sup>th</sup> Annual Open Juried Exhibition Art Gallery of Hamilton, August 9 to September 21, 2008.

Valerie Ashton	Stouffville, ON	<i>Abstract Wine</i>
Cheryl G. Battistelli	Whitefish, ON	<i>My Song</i>
Glenn Bernabe	Markham, ON	<i>Laundromat</i>
Diana Blazek	Thessalon, ON	<i>Enchanted Tree Climber II</i>
Diana Blazek	Thessalon, ON	<i>Enraptured Tree Climber III</i>
Diana Blazek	Thessalon, ON	<i>Enchantress Tree Climber I</i>
Gloria Burgoin	Ancaster, ON	<i>Crawford Lake Trail</i>
Cathy Cullis	Burlington, ON	<i>Passing Through</i>
Christina Edwards	Cambridge, ON	<i>Mountain Stream Boulder</i>
Christina Edwards	Cambridge, ON	<i>February on Speed River</i>
Louise Falconer	Manotick, ON	<i>The Pink Tree Peony</i>
Brittani Faulkes	Richmond, BC	<i>Embrace</i>
John Geeza	Guelph, ON	<i>Caerfai Bay</i>
John Geeza	Guelph, ON	<i>Markdale Meadow, Winter</i>
Natalie Gerasimchuk	Hamilton, ON	<i>Sunset</i>
Ina K. Gieysztor	Montreal, QC	<i>Menton's Jewel</i>
Evelyn Gracey	Mississauga, ON	<i>Serenity</i>
Karen Leslie Hall	Toronto, ON	<i>Bottoms Up</i>



Tim Daniels and Jessie Grant unpacking paintings for the PAC 17th Open Annual Juried Exhibition in the Art Gallery of Hamilton.

More help has arrived!  
Janet Parker and Cathy Cullis join Tim and Jessie  
unpacking paintings for the Exhibition.



### Membership Report – Barb Harris

A warm welcome is extended to the following new members since the last newsletter:

Phyllis Gordon, Toronto, ON  
Mary L. Miller, Ayr, ON  
Judy Webber, Surrey, BC  
Wei Yan, Oakville, ON

We also welcome back returning members –

Pat McDonald, Dundas, ON  
Elvira Sloan, Zephyr, ON

We would like to hear of your progress and any events in which you may be participating, and remember to send a mini-bio, with images, for use in upcoming newsletters to June Gauthier at: [newsletter@pastelartists.com](mailto:newsletter@pastelartists.com).

Any questions regarding membership please email me at [barbh@pastelartists.com](mailto:barbh@pastelartists.com) or mail inquiries to:

Membership  
Pastel Artists.Ca  
P.O. Box 351  
Flesherton, ON  
N0C 1E0

### PAC News Updates by Email

We understand that not all PAC members have email access. **We do not want you to be left out!** PAC News Updates are sent out when a bit of interesting information comes to us or a deadline cannot wait for the next newsletter. Please see if you can find a PAC buddy to keep you posted if something you would be interested in comes up.



### Member News.....

**Claire Chevarie**, Moncton, NB, has been painting on cheesecloth for the past couple of years and things have really changed as far as sales and recognition in the art world is concerned. Collectors bought 18 paintings during the summer months, 2007 ranging in price from \$1,200 to \$6,000. Claire says, "I still think pastel painting on cheesecloth is the best idea I've had for a long time." Claire had a solo show at Galerie Restigouche, Campbellton, NB, mid-May to mid-June. Her next solo show is at Galerie Mosaïque in Moncton, NB, during the month of August 2008. Visit Claire's new website at [www.clairechevarie.com](http://www.clairechevarie.com)

**Christine Camilleri**, Coquitlam, BC, and **Ann Kelly Walsh**, Burlington, ON, had their paintings accepted into the 11th Annual International Association of Pastel Societies Exhibition at the Butler Institute of American Art in Youngstown, Ohio. The exhibition opened on June 8, 2008. Christine's painting was titled *Trail Boss* and Ann's painting was *Beach Cottage*.

**Cathy Cullis** of Burlington, ON, had her painting *West Coast Beach* selected for the 'Judge's Choice Award' in The Fourth Annual Northeast National Pastel Exhibition at The Arts Guild of Old Forge, Inc., Old Forge, NY, May 10 - June 8, 2008.

**Sharon Fox-Cranston** will be the Featured Artist August 1 to August 31, 2008 at the Artemisia Gallery, 34A Main Street, Westport, ON, 613-279-8775 [artemisia@kingston.com](mailto:artemisia@kingston.com). "Art is an undeniable necessity and intrinsic element that defines my life. From my first Crayola - I was hooked."

**David Parson** will have a mini-series of four paintings called *Phalaenopsis* in a group exhibition during the month of August, 2008, at Christensen's Fine Art, 432 George Street North, Peterborough, ON, K9H 3R5, 707-876-9623, [info@christensenfineart.com](mailto:info@christensenfineart.com).

PAC members **Rosemary Simpson** and **Janice McDermott** will join a group of artists interpreting two Halton Conservation Area parks, Crawford Lake and Mountsberg, in a special program, *Through the Eyes of an Artist*, August 20-24, 2008. For more information contact Rosemary: [rasimpson@cogeco.ca](mailto:rasimpson@cogeco.ca).

**Barb Ritchie**, Barrie, ON, is exhibiting along with another artist in a show at the Barrie Art Club Gallery, 364 Dunlop St. W., Unit 17, Barrie, ON. July 4 to September 5, 2008, Tuesday to Friday, 10 am to 3 pm. The Show **Double Trouble** has a multitude of styles and media, featuring vivid colour and landscape.

## Pastel Artists.Ca - Purely Pastel Autumn Issue, 2008

**Vicki Brophey** has been accepted into the annual juried "Insights" show held at this time every year at the Wellington County Museum and Archives in Elora, Ontario. The exhibition continues to Labour Day. More than 300 entries were submitted and the three jurors made the final selection of 70 works of art from a broad range of media.

**Beth Bouffard**, Whitefish Falls, ON, will have a solo show in the Sudbury Theatre Centre, Sudbury, Ontario, October 17 to November 17, 2008.

**Beth** was the "Distinguished Artist" for the 31st Annual La Cloche Art Show, held in Whitefish Falls, Ontario, July 5 to 13, 2008. This large, multi-media juried show is one of Ontario's oldest and most successful juried exhibitions. As the featured artist, Beth served as one of the three Fine Art jurors, donated an original pastel to be used for the advertising poster and raffle, gave a presentation to the participating artists and had eight of her recent paintings prominently displayed at the show. She was on hand throughout the show, giving her the opportunity to speak to hundreds of visitors, thus raising the awareness of pastel as a Fine Art medium. More information on the La Cloche Art Show can be found at their website [www.geocities.com/laclocheartshow](http://www.geocities.com/laclocheartshow).



Gloria Burgoin painting in Vicki Brophey's Annual Spring Fling

Although short notice was given for **Vicki Brophey's Annual Spring Fling** the weather was pleasant with a little dampness in the early afternoon. Other than that, Gloria Burgoin and Vicki enjoyed the challenge. Rockwood Conservation Area is such a diverse area to paint, Vicki will attempt to arrange another paint-out there in the early fall with expectations of more artists joining in on the fun.

### **Eldora Taylor's Annual Paint-out on Vim Island, at McGregor Bay, ON. June 19 to 23, 2008**

Once again this paint out was fantastic, wonderful and loaded with fun. We were a group of seven with painting on our minds. PAC Members: Eldora Taylor - Meaford, Greta Bannan - Owen Sound, Karin Meilinger - Wasaga Beach and

Rosemary Simpson - Milton, were joined by Eldora's friends Carol Ann, Noel and James.

It was a beautiful drive from Milton to Meaford, then on around Georgian Bay to Espanola. Once at Whitefish Bay we loaded everything up; food, clothing, painting supplies and people onto a boat bound for Vim Island. For those of us who were there before, it was like coming home. Once all the gear was stowed, it was out to explore and look at the wonderful Scenery - a perfect 360 view. Most of us worked in pastel but we had artists working in acrylic and oil. It wasn't all work, one needed to relax as well and just absorb the scenery. All our thanks to Eldora for organizing this adventure once again.

Rosemary



Eldora at her easel on Vim Island

A couple of wealthy Albertans have commissioned **Britanni Faulkes**, Richmond, BC, to paint as many snow scenes as she cares to produce for their annual charity sale to benefit the Calgary Ballet. And, after giving a one hour talk to the local guild in Tsawwassen, BC, on how to get into a gallery, a woman came up to Britanni and introduced herself as the acting editor for the *International Artist Magazine*. She said she would like to do an article on Britanni's pastels. Britt says, "It doesn't mean the publisher will accept the article, but I'll keep my fingers crossed".

**Tim Daniels**, Burlington, ON., had a solo show, *Journey*, held in the Abbozzo Gallery, Downtown Oakville, ON., in June 2008.

A bon mot, taken from Graham Greene's novel, *The Tenth Man*, "An artist paints his picture not in a few hours but in all the years of experience before he takes up the brush."



## **French Envelope Framing**      Brittani Faulkes

French envelope framing is an old method which has the glazing come into contact with the artwork. It is not an archival method of framing, because when glazing comes into contact with the artwork, over time, there is the potential for the art's image to 'ghost' into the glazing. Without having a space above the artwork, usually created by lifting the glass with a mat, there is nowhere for the chemicals to off-gas. However, French envelope framing still has its good points. It is a very good method of framing pastels if you intend to ship them. Since the glass is taped into place, there is absolutely no movement between the surface of your pastel and the glazing. Further, low tack painter's tape (hardware store) can be laid completely or in overlaps on the surface of the glazing, so, if there is breakage during shipping, you can simply lift the glazing out of the frame with the tape and not worry about damaging your pastel.

As in any case, you should not have your pastel where it can be hit by the sun and create humidity. You can decrease non-archival properties by avoiding plastics such as gatorboard and regular foamcore and instead use archival foamcore or mats as a supportive backing, with a paper barrier on the backside of the moulding.

If your framer does not want to do a French envelope frame, it may be because she/he does not know how and is worried about damaging your artwork. It is simple enough to do yourself. You will need a cut piece of non-glare glass (this is Brittani's preference so it will look as if there is no glass at all, however, regular glass also works to anchor the painting firmly in the French envelope), a roll of clear 3/4" wide Framers Tape 11, an X-acto knife with a sharp blade, a cutting board to put under your artwork, double sided acid-free tape, supportive backing (foamcore or matboard) and barrier paper. Your framer should be able to sell you these products. If you have a business registration number, you may also be able to pick them up wholesale from a framing supply company.

### **Here is a step by step method for French envelope framing:**

#### **Step 1:**

Before painting your pastel, the support should be adhered to a larger-in-dimension acid free sheet of foamcore. Very carefully measure and indicate where you will score and cut the backing. Remember, measure twice, cut once. There is no margin for error!



#### **Step 2:**

If you do not have access to a mat cutting machine, place a suitable cutting board behind your mounted pastel. Using a metal ruler, score the first cut and continue to lightly go over the score line until you have cut through. Proceed to do the same with the other 3 sides. Periodically check your measurements. A square is an asset to have on hand. Be sure to thoroughly clean your tools and hands before proceeding.

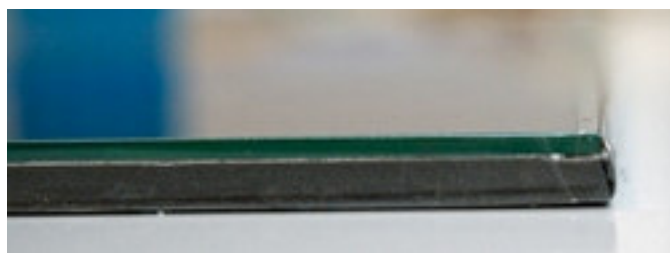


#### **Step 3:**

Take your non-glare glass and clean the shiny side surface, this is the side that goes against the pastel. I use glass cleaner in a spray bottle and lint-free blue shop towels from Canadian Tire. Wipe once to spread the glass cleaner and soak up the fluid. Use a second dry towel to polish the surface. Let it dry thoroughly. Flip it over and carefully lay it on top of your artwork so that all edges are square. Clean the top of the non-glare glass (the non-shiny side).

#### **Step 4:**

Take a roll of clear 3/4" Framers Tape 11. You will lay approximately 1/8" of an overlap onto the edge of the glass and carefully tuck the rest of the tape onto the side and back of your support material. Be wary of sharp edges and burrs on the glass. It is helpful to wear white cotton framer's gloves. Make sure the tape is secure on the first side. Turn your artwork to work on the opposite side (bottom to top, left to right). Continue on the other 3 sides. Check for movement. The package should be tight and secure.



#### **Step 5:**

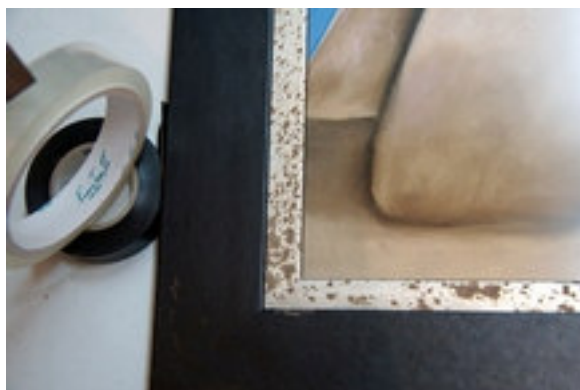
Carefully place the enveloped package into the rabbit (lip) of the frame you are using. Check the front to spot pieces of

dust before you seal the back with gun-shot brads or hammered brads. The frame is usually cut 1/8" larger than the glazing and materials size to accommodate expansion of the frame due to humidity. Check the front again before you attach a dust cover. Line the exterior of the back edge of the frame with double sided tape, lay brown barrier paper on the back, cut off excess paper. Attach your hanging hardware and wire.



**Step 6:**

The finished product under non-glare glass, with nicely presented edges.



**Note:** The above instructions for French Envelope Framing can be found on the PAC website: [www.pastelartists.com](http://www.pastelartists.com) under Artist Tutorials.

***New Member Mini-Bio's .....***

**Roy Sanger** lives in Scarborough, Ontario and has been an artist for quite some time but he only started painting with pastels within the last year. "I find it a very challenging medium and have come to love it." (See Roy's painting, *Still Life with Red Lantern* on back cover.)

Space on the covers were at a premium in this newsletter and we hope to have Wei Yan's and other new members' mini-bios and paintings in the next issue.

***Tim's Tips #3*** by Tim Daniels

We all love summer, however, we do not all love painting landscapes in the summer. The problem: there is green everywhere and it is just not very interesting.

Recently, I spent some time looking at landscape paintings by a variety of artists. Some are well known: Corot, Courbet, Cezanne. Others less so: Stuart Shils, Richard Crozier and Lennart Anderson. All of these artists have green landscapes in their body of work. I will get to some common elements later.

Before I wrote this article I decided to go out into my back yard and do a small pastel of a corner of the garden. What I ended up doing was making a chart of all the colours that I could identify. To see the result go to - [http://web.me.com/timothydaniels1/Painting The Summer landscape/Tip 1.html](http://web.me.com/timothydaniels1/Painting%20The%20Summer%20landscape/Tip%201.html)

Doing this small project helped me overcome the major obstacle I faced; lack of interest. Try it! You'll be surprised by what you see.

Successful paintings can also be based more on value relationships (patterns of light and dark) than colour. In my own work I am most drawn to abstract patterns based on value and/or colour.

In successful green paintings the artist has usually found a way to neutralize or balance the green-ness. I like to add light glazes of orange or reddish brown over green areas. I think that it makes these areas more interesting. A painting has its own internal logic that is often completely separate from the reality of the scene that you're painting. In other words, it is your painting, you make the rules. Some examples of these concepts are shown on my mini-website.

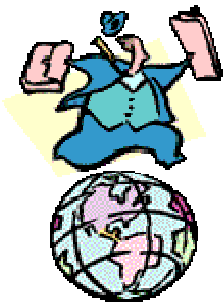
Have a nice summer!  
Tim

**More praise for the "It's Not Chalk!" Symposium**

**Mona Corby** is a non member who was at the Symposium. She is one of **Rosemary Simpson's** students and avoids Still Life.

"Thanks again for the symposium, it was an uplifting and positive experience, I had fun in all of the sessions I took, and have taken away many ideas to incorporate into my artwork. **Tim's course even gave me new insights on Still Life - as you know not my favourite subject. I really enjoyed the colour course and switching my focus to muted colour with touches of brilliance, a very unique treatment compared to the average colour course. This concept is a fascinating one. Looking forward to putting some of it on paper.**"





## Events & Activities

In  
your Area

This is a new column that I hope you will all help me to keep current. What is going on in your local areas? Are there painting groups such as the Plein-air Painters of Lanark County, ON (see below), meeting in your location? Would you like to get together for a critique party, a paint-in/out, an artist's luncheon, anything you think will be of interest to other PAC members near you? Let me know and I will put it in this column or if time is of the essence we will send it out online in PAC News Update.

### Toronto, ON - Bernie Gelfand

Bernie would like to help organize some pastel activities for members in the GTA region. He will be in touch with members in this area by e-mail in the near future and solicit members' ideas for things that would stimulate us. If you have ideas "right off the top" please send them to Bernie at [bdgelf@magma.ca](mailto:bdgelf@magma.ca).

### Toronto, ON - Sheila J. Mitchell

Sheila would like to get a Toronto Based Pastel group to meet and draw together. If you are interested please contact Sheila at 416-756-3221 or at [BrushWithArt@gmail.com](mailto:BrushWithArt@gmail.com)

### Lanark, ON - Sharon Fox Cranston

The Plein-air Painters of Lanark County, ON, meet for scheduled paint-outs **throughout the Spring, Summer and Fall seasons**. For more information and calendar: [www.sharonfox.ca/pleinair.html](http://www.sharonfox.ca/pleinair.html).

### Ladner, BC - Brittani Faulkes

**Saturday September 13, 2008 10 am to 4 pm.**

There will be a one-day paintout at **Reifel Bird Sanctuary, Westham Island (Ladner, BC)**. Free parking, \$4 all day admission, washroom on site. Britt says, "let's aim for a minimum of 8 painters and finish the paint-out day with a group get together at Westham Island Winery! There is fun in numbers, so let's get out and paint!" (Spouses and partners welcome.) Contact Britt at [bffa@shaw.ca](mailto:bffa@shaw.ca) or 604-916-0458.

### 202 Ridge Rd. W., Grimsby, ON - Heidi Rohde

**Saturday, September 13, 2008 10 am to 4 pm.**

**Rain date: Saturday, September 20, 2008**

Heidi's brother, **Karl Gonnson**, has a small vineyard very close to Beamer's Falls Conservation Area. He is situated on the escarpment with views towards Toronto. Beamer's Falls is a wonderful location on the Bruce Trail with many amenities and scenic views. He and his wife have kindly agreed to let members meet at his home and paint at either location for

the day. Let Heidi know if you wish to join the paint-out come by **September 6, 2008**. Call at 905-335-9866 or email [rohde.heidi@gmail.com](mailto:rohde.heidi@gmail.com).

### 26 Fenton Lane, Port Hope, ON - Judy Miner

**Saturday, September 13, 2008 10 am to 4 pm.**

Judy has extended an invitation for interested members to a paint-out at her home in Port Hope. Judy says there are gorgeous old buildings, stone walls, beautiful landscapes and the Ganaraska River close by. She has room for a dozen people or more with a large porch facing Lake Ontario as well as a studio which will accommodate four. This sounds like a wonderful spot at a time of year when the heat and the bugs are gone. There are several fast food places in the area for lunch or you can brown bag it. Let Judy know by **September 12, 2008** if you wish to accept her invitation. Call at 905-885-7974 or email her at paulminer@sympatico.ca.

### Drag Lake, Haliburton, ON - Heidi Rohde

**Planned dates: September 28 to October 1st., 2008.**

This year the Lodge is being offered first to Burlington Fine Arts as a paint-out location, but Heidi will have a few spaces available. Stay as long as you like - \$35.00 per night. Contact Heidi Rohde for more information. 905-335-9866 or email [rohde.heidi@gmail.com](mailto:rohde.heidi@gmail.com).



### Cheltenham Badlands, Caledon, ON - Vicki Brophey

**Scheduled for Friday, September, 26, 2008**

**From 401 go North at Hurontario St.,** to Old Base Line Rd., turn left to Cheltenham Conservation Area (evident from the road, Red Clay formations) 5miles on left.

**From 401 go North at Mississauga Rd.,** to Old Base Line turn right about 1 mile on the right hand side Cheltenham Area.

**From the North: take Winston Churchill Rd.,** to Old Base Line then turn left crossing over Mississauga Rd. Cheltenham about 1 mile on right hand side.

There is a small parking lot at the road edge. It is a very interesting area to explore and paint. Hope to see many of you there! Vicki

Contact Vicki at: [vbrophey@kw.igs.net](mailto:vbrophey@kw.igs.net) or 519-822-8603.

**Meaford, ON** - The Meaford Hall Arts & Cultural Centre would like to let artists know that the Hall is available to

independent artists or groups of artists to rent for their shows. Susan Lake is the Manager, and her contact info is: 519-538-1060 ext. 1209, or [slake@meaford.ca](mailto:slake@meaford.ca).

**WOW! What a lot of news for this new column. There is a lot going on. We hope many of you will join in the fun and keep the information flowing.**



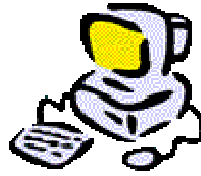
**Karin Meilinger**, painting on Vim Island.

### **2008 MPAC Jurying Results:**

The MPAC committee is pleased to announce that **Michael Chesley Johnson** and **Karin Richter** have been awarded Master Pastellist standing by our three-person jury. Congratulations to Karin and Michael! The judges were impressed by the uniformly high quality of the submissions. However, in any competition, some work stands out from the rest. We asked the judges to give us feedback about what they were looking for during the jurying process. Here are some of their comments:

- Present only your strongest work. Think extraordinary. Jurors look for a unique voice. They see lots of lakes, portraits and trees. Do yours stand out?
- Drawing, composition and colour are the elements of good paintings. Master Pastellist standing embraces all of these elements.
- If you're working from photographs, try to go beyond the photographic information. Don't be a slave to the photo. It shows.

See two images of Michael and Karin's work on the back cover. More examples of their work will be posted in the Master Gallery at [www.pastelartists.com](http://www.pastelartists.com).



**PAC Online  
&  
News Central**

[www.pastelartists.com](http://www.pastelartists.com)

#### **Advance notice: Fee increase 2009**

Many of you have mentioned that you would like to be in the PAC Online Gallery. Now is the time to stop thinking about it and do something about it. Come join us in the Gallery before December 31, 2008 and take advantage of the 2008 fee structure.

The website fees have remained stable since 1998. We hate to raise them now but reality makes it so. The PAC Online Gallery is still a wonderful, affordable way to showcase your work on a well respected, active, international web site. Our site continues to be visited by over a million a month. That is a lot of traffic! **If you have been juried into art shows, won awards, had solo shows, then please join us.** Your work must be original and professional in every way. If you would like an application form contact Rosemary at 905-335-8074 [rasimpson@cogeco.ca](mailto:rasimpson@cogeco.ca) or you will find the 2008 download at <http://www.pastelartists.com/membership> under Benefits of Joining PAC.

Visit the web site for the latest news and events. Right now the 17<sup>th</sup> Open Annual Juried Exhibition is advertised and there is a download for the publicity flyer and new "Calls for Entry" that may be of interest to you.

Watch for the posting of the new MPAC recipients in September. The 17<sup>th</sup> Open Annual Juried Exhibition will also be added to our galleries.

We often get requests from members to link with their home sites. Sorry folks, you must be in the online gallery to be given a home link as the web site is run as a co-op.

I expect to be very busy in the next few months as many of you will want to take advantage of the 2008 fee structure. Artists already in the Online Gallery, we are looking for more new work as well as welcoming new artists.

Rosemary

**New Fees: Starting January 1, 2009**  
**Initial set up fee will be \$80.**  
**Renewal fees due each January will be \$30.**  
**Posting of new images/bios will be \$7.**

## Other Calls for Entry.....

### The Pastel Journal 10th Annual Pastel 100 Competition Deadline September 1, 2008

Slides or CD. Five categories. Submit as many entries as you wish. Artists must be age 16 or over. Work must be at least 80% soft pastel; no oil pastel. Nupastels and other "harder" pastels are considered soft pastels. The contest is open to artists in the U.S. and abroad. All works must be original. Compositions based on published material or other artists' work are NOT considered original and are not eligible. Paintings executed in a workshop under another artist's supervision or paintings based on another person's photograph (even if copyright-free) are NOT eligible. Submit online or via mail. For entry form or information: [pjcompetitions@fwpubs.com](mailto:pjcompetitions@fwpubs.com) or **Nicole Florence**, Customer Service, Competitions F+W Media, Inc., 700 East State Street, Iola, WI 54990-0001 Phone: 715-445-4612 Extension 13430

**The Artist Project Toronto** is seeking applications from independent fine artists for its second annual exhibition and sale. This four day juried art fair will feature over 125 of the best emerging and established artists and collectives. Set against the spectacular backdrop of the historic Liberty Grand, Exhibition Place, Toronto, ON. March 5 to 8, 2009. The Artist Project Toronto is an excellent opportunity to expand your market and connect with galleries, collectors and first-time art buyers. For applications and more information visit: [www.theartistprojecttoronto.com](http://www.theartistprojecttoronto.com). **Deadline for application September 19, 2008.** For more information: Kim Selman, [kim@mmpicanada.com](mailto:kim@mmpicanada.com), 10 Alcorn Ave., Suite 100, Toronto, ON M4V 3A9 or 416-960-4527.

### There is still time to enter The Seventh Biennial IAPS Convention Catalogue Cover Competition

**Deadline for entry October 10, 2008** Slide entry only! The winning painting will be published on the IAPS Convention Catalogue and in other international convention publicity. Proof of membership in IAPS is required. Download entry form at [www.pastelinternational.com](http://www.pastelinternational.com) or contact Anne Heywood, phone 608-378-4239 or email: [aheywood@anneheywood.com](mailto:aheywood@anneheywood.com). (Copy of PAC membership card is proof.)

**The Richeson 75 International Pastels Art Competition**  
**Deadline for entry November 15, 2008.** Seventy-five two-dimensional finalist works of art and several alternates will be selected to represent the finest examples of pastel painting and drawing being produced by today's visual artists. The exhibition will be held at the Richeson Gallery in Kimberley, Wisconsin, from January 16 to March 5, 2009. The competition is open to all artists over age 18. All work must be original in concept/execution and have been created since January 1, 2007. No work done in a class, workshop or under supervision is eligible and only work with at least 80% of the top layer executed with soft pastel. For more information go to: [www.richesonart.com](http://www.richesonart.com).

## Calendar of Events.....

### 2008

August 9 to September 21	"Purely Pastel" Exhibition in the Art Gallery of Hamilton.
August 14	Opening Reception of "Purely Pastel".
September 13	Paint-out at Reifel Bird Sanctuary, Westham Island (Ladner, BC), 10 am to 4 pm.
September 13	Paint-out at 202 Ridge Rd. W., Grimsby, ON, 10 am to 4 pm.
September 13	Paint-out at 26 Fenton Lane, Port Hope, ON, 10 am to 4 pm.
September 26	Paint-out at the Cheltenham Badlands, Caledon, ON
September 28 to October 1	Paint-out at Drag Lake, Haliburton, ON.
October 20-24	Richard McKinley Workshop CAMMAC, Quebec.



Greta Bannan sketching on Vim Island.

## Product Information

**Classic Gallery Framing Inc.**, in Kelowna, BC, uses efficient manufacturing processes combined with great care and detail to make high quality handcrafted products. Every step of their production is done inside their own factory, allowing them to be more competitive and offer better quality control of their products. Classic Gallery inventories over 1000 frames and other framing products. Jim Fidler, the president says, "We ship all over North America and our shipping policies are designed to allow us to ship long distance at very little cost to the artist." If you are on Classic Gallery's email list you will be notified when they have a sale of specific frames with savings up to 40%. Visit their website at [www.classicgalleryframing.com](http://www.classicgalleryframing.com) or for more information: [info@classicgalleryframing.com](mailto:info@classicgalleryframing.com).



# Master Pastel Artist.Ca - 2008

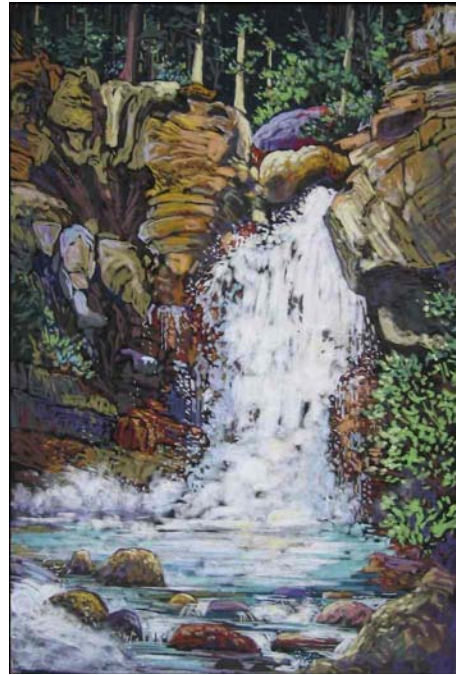
**Michael Chesley Johnson**



*Apple Tree with View*

and

**Karin Richter**



*Wall of Water*



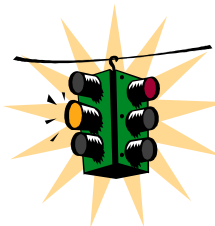
*Fleming Farm*



*Quiet Bay*



**Roy Sanger** - *Still Life with Red Lantern* (Mini-Bio page 8)



***Next Newsletter***

**Deadline  
October 15, 2008**

**Newsletter Editor:  
June Gauthier  
Pastel Artists.Ca  
P. O. Box 351  
Flesherton, ON. N0C 1E0**

*Send your  
information on  
shows, workshops,  
paint-outs, tips  
and photos of  
events to:*

**Tel. 519-924-2202  
email:newsletter@pastelartists.com**