



Pastel Artists Canada  
*“Purely Pastel”*

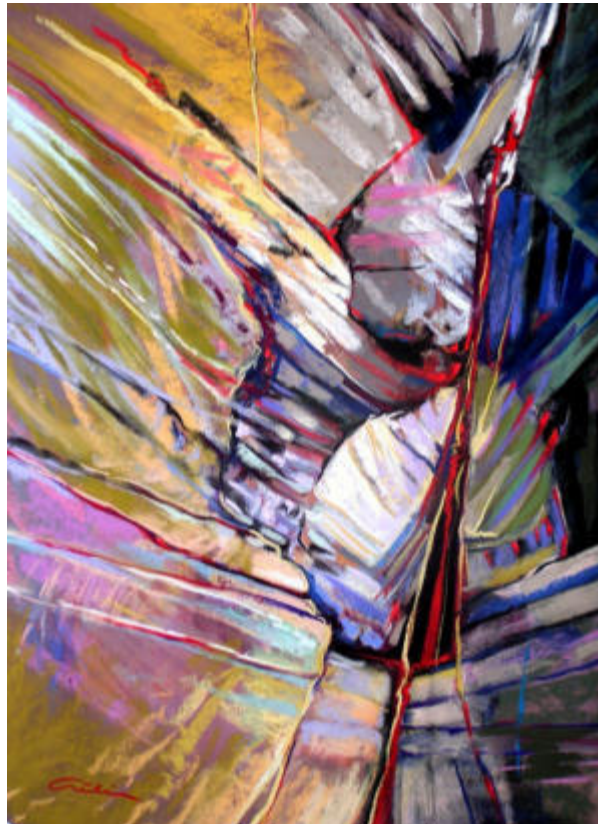
[www.pastelartists.com](http://www.pastelartists.com)

Member of IAPS [www.pastelinternational.com](http://www.pastelinternational.com)

Winter Newsletter, November 2006

*“Purely Pastel”*

*15th Annual Open Juried Exhibition  
November 11, 2006 to January 28, 2007*



*Cool & Warm Composition - Aili Kurtis, MPAC, PAC*

Art Gallery of Hamilton  
Jean & Ross Fischer Gallery  
123 King Street West  
Hamilton, ON L8P 4S8



*Opening Reception:  
Thursday, November 16, 2006, 7-9 pm  
Presentation of Awards and Prizes*

*Prizes by: Pastel Artists Canada, Jack Richeson & Co. Ltd., Daler Rowney, Loomis Art Store,  
Pastel Journal (FW Publications) Anonymous Cash Donation*

## Pastel Artists Canada - Purely Pastel Winter Issue, 2006

### Pastel Artists Canada

[www.pastelartists.com](http://www.pastelartists.com)

### History

The Pastel Artists Canada was founded in 1989 by a small group of artists in the Burlington area. Its membership has since grown to 200 artists. Known previously as Pastel Artists of Ontario, Canada, the name was changed May of 2003 to reflect our diverse membership.

### Purpose

To promote public appreciation of Art in Soft Pastel and to improve the skills of artists working in this fine art medium.

- PAC sponsors workshops led by well-known International Instructors plus our own teachers.
- Our Newsletter "Purely Pastel" is issued quarterly and has a lively exchange of information with international Pastel Societies. It is now available via our web site to members.
- PAC Members automatically become part of the International Association of Pastel Societies and may participate in IAPS Biennial Convention. As well as participation in PAC's own Member Shows and Juried Shows, members may participate in the Shows of the Pastel Society of Eastern Canada, in Quebec.
- Participation in the PAC Members Show is open to all members for a small fee.
- Signature Society - Granted to members who have been accepted in 3 PAC juried shows.
- Participation on our PAC Website for a small fee.
- Master Pastellist Signature Category MPAC.

Membership in PAC is open to all who are interested in the medium of Pastel.

The membership is based on the calendar year and is due each January. New members joining September 1, will receive membership for the current year and the following year.

**Membership Fee: \$40 @ year**  
**Outside Canada Fee: \$50 US @ year**  
**Pastel Artists Canada**  
**P.O.Box 351**  
**Flesherton, ON N0C 1E0**

### PAC Contacts

<b>Rosemary Simpson</b> , Milton President, Director of Web Services president@pastelartists.com	Tel: 905-335-8074 Fax: 905-335-7482
<b>Ursula Reese</b> , Cookstown Past President ursula.reese@pastelartists.com	Tel: 705-458-2384
<b>Tim Daniels</b> , Burlington Vice President Administration of Web Participants tim@pastelartists.com	Tel: 905-632-1978
<b>Heidi Rohde</b> , Burlington Vice President	Tel: 905-335-9866
<b>Ann Kelly Walsh</b> , Burlington Secretary secretary@pastelartists.com	Tel: 905-336-0993
<b>Janet Parker</b> , Dundas Treasurer janet@pastelartists.com	Tel: 905-627-0222
<b>Barb Harris</b> Membership barbh@pastelartists.com	Tel: 519-924-3792
<b>Cindy Riach</b> , Dundas Workshop Coordinator cindy@pastelartists.com	Tel: 905-627-5747
<b>June Gauthier</b> , Flesherton Newsletter Editor newsletter@pastelartists.com	Tel: 519-924-2202
<b>Cathy Cullis</b> , Burlington Promotional Publications cathy@pastelartists.com	Tel: 905-333-6409
<b>Lynne Ritchie</b> , Toronto Publicity lynne@pastelartists.com	Tel: 416-604-3315
<b>Maureen Dorinda</b> , Port Perry Society Record Keeper maureen@pastelartists.com	Tel: 905-982-1118
<b>Mette Baker</b> , Dunrobin Area Rep, Ottawa & Area mette@pastelartists.com	Tel: 613-832-3737
<b>Vicki Brophay</b> , Guelph Area Rep, South Ontario vicki@pastelartists.com	Tel: 519-822-8603
<b>Eldora Taylor</b> , Meaford Area Rep, Mid-West ON eldora@pastelartists.com	Tel: 519-538-5181
<b>Inak Gieysztor</b> , Montreal Area Rep, Quebec inak@pastelartists.com	Tel: 514-939-4321
<b>Brittani Faulkes</b> , Richmond, BC Area Rep, West Canada brittani@pastelartists.com	Tel: 604-272-8909
<b>Sally Jackson</b> , Oakville Master Pastellist Chair sally@pastelartists.com	Tel: 905-844-0207

### PAC Canada Web Site:

Members of PAC may join the Online Artists Gallery on our site. Participants must be current members of PAC and pay a Web renewal fee of only \$20 per year, due January 1 of each year. We encourage members to change their images often to keep the site interesting to visitors. The rate is \$5 per change.

Those who join after September 1 of the current year are exempt the following January renewal fee. The site functions as an art portfolio for the participants and news central for PAC.

The PAC website has the latest workshop registration forms for download and back issues of the newsletter.



*From the  
President's Easel*

Congratulations to all the artists selected into the Juried Show. The competition was once again very steep. Our thanks to Duane Wakeham, for his thoughtful process of selection and comments. It is a beautiful show. I hope to see many of you at the Opening on November 16th. We have a wonderful reception planned. The awards will be announced and Signature recipients honoured at that time. A special thank you to Aili Kurtis for the use of her image from last year's juried show in Mississauga. Each year we pick a work that will fit the vertical format for our Juried Show flyers and to represent PAC for the promotion of the coming show.

Many people work to bring the Juried Exhibition together. Our thanks to Jessie Grant, slide coordinator and Janet Parker, show coordinator. This year a special 15th Anniversary program booklet has been published to celebrate our 15th Annual Juried Exhibition. Each artist in the show will receive one as a gift. More programs will be available at the opening for a small donation to help defray printing costs. A special thank you to Cathy Cullis for the publication, it is beautifully done and will be a wonderful keepsake.

The last few months have been a busy time for paint-outs. Thank you to Coordinators, Britanni Faulkes for her BC Historic event, Eldora Taylor for her Georgian Bay adventure and Heidi Rohde for the Haliburton Highland camp retreat.

The executive will be meeting this November to work on the calendar of events for 2007. Send your ideas for paint-outs and workshops to Workshop Chair, Cindy Riach. She has already received some good suggestions and offers. She will be looking for coordinators for the coming events, so please don't be shy.

Look forward to a 5 day workshop by Richard McKinley, October 20 to 24, 2008 and our first Pastel Symposium in April of 2008 at the Burlington Art Centre. Don't miss attending the IAPS Biennial Convention in Albuquerque, New Mexico, this coming May 2007.

Happy pastelling,  
*Rosemary*

**Paintings selected by juror  
Duane Wakeham  
for  
"Purely Pastel"  
15th Annual Open Juried Exhibition**

Lisa Beechener	<i>Nostalgia for Lost Childhood</i>
Shirley Black	<i>Ebb Tide, Charlevoix</i>
Beth Bouffard	<i>Loopholes</i>
Wendy Boyd	<i>Balancing Act</i>
Vicki Brophey	<i>Precipice</i>
Gloria Burgoin	<i>Open Water</i>
Bruce Clemmensen	<i>Adjala Hills</i>
Roberta Combs	<i>Waiting for the C-Train</i>
Catherine Cullis	<i>Norwegian Summer</i>
Catherine Cullis	<i>Scenic Caves</i>
Timothy Daniels	<i>Rocky Hillside Near Guadalajara</i>
Marlene Faucher	<i>Jeux Libres</i>
Brittani Faulkes	<i>Shed</i>
Margaret Ferraro	<i>Orange Sticks of the Sun II</i>
Natalie Gerasimchuk	<i>Landscap</i>
Inak Gieysztor	<i>Bruges - The Bridge</i>
Evelyn Gracey	<i>Far and Wide</i>
Jessie Grant	<i>Tidepool</i>
Janis Miller Hall	<i>Nature's Cycle</i>
Karen Leslie Hall	<i>Embossable Dream II</i>
Barbara Harris	<i>Picnic Tree</i>
Bert Huizinga	<i>Hills in August</i>
Valerie Jackson	<i>By the Fairy Door</i>
William H. Johnston	<i>Rural Dundas</i>
Glenda Krusberg	<i>Brown's Inlet Reflections #1</i>
Glenda Krusberg	<i>Peonies with Thai Pot</i>
Aili Kurtis	<i>Evening Glow</i>
Joan Larson	<i>Swan</i>
Kathy Mann	<i>Fox Lane</i>
Leyla Munteanu	<i>Jose Seoane</i>
Leyla Munteanu	<i>Locked</i>
Robin Sheard Nyikos	<i>Cranes Falling on Silk</i>
Ann Oakley	<i>Self Portrait</i>
Janet Parker	<i>Rural Quebec</i>
David Parson	<i>The Pastor's Shed</i>
Boni Penna	<i>Hiawatha Creek</i>
Dianna Ponting	<i>Pepper Jelly</i>
Clarence Porter	<i>Red Vase and Sunrise</i>
Clarence Porter	<i>Tim</i>
Cindy Riach	<i>View from Kayak</i>
Cindy Riach	<i>White Egret</i>
Karen Richter	<i>Rocky Falls</i>
Antonine Rodier	<i>il a neige</i>
Phyllis Ross	<i>Wakefield Corner</i>
Page Samis-Hall	<i>Pathway at Paisley Island</i>
Rosemary Simpson	<i>Winter Sunset</i>
Miriam Slan	<i>Winter Fence</i>
Tony Vander Voet	<i>Reclining Gourds</i>
Linda VanWyk	<i>Leave me Dreaming</i>
Ann Kelly Walsh	<i>Sunset Cliffs</i>
Stephanie Wellman	<i>Morning Light</i>

## Pastel Artists Canada - Purely Pastel Winter Issue, 2006

### Membership Report - Barb Harris

Any questions regarding membership please email Barb Harris at [barbh@pastelartists.com](mailto:barbh@pastelartists.com) or mail inquires to:

Membership  
Pastel Artists Canada  
P.O.Box 351  
Flesherton, ON  
NOC 1E0

We are pleased to welcome the following new members:

**Linda Batten** - Guelph, ON  
**Guy Cranston** - White Rock, BC  
**Sharon Fox** - White Rock, BC  
**Stacey Fox** - Thorold, ON  
**Dan F. Gray** - Errington, BC  
**Heather Haley** - North York, ON  
**Nerio J. Zarraga** - Victoria, BC

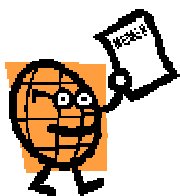
Welcome to all and we hope you will enjoy your membership. Artists all love to see other artists work so if you have not done so please send in a mini-bio about yourself and couple of images to June at [newsletter@pastelartists.com](mailto:newsletter@pastelartists.com) to put in one of our future newsletters.

Membership open to all who are interested in the medium of pastel. Membership is based on the calendar year and is due each January. New members joining after September 1st will receive membership for the current and following year. The annual Fee is \$40 and outside Canada \$50 US.

### Time to renew your membership in Pastel Artists Canada and in the Online Gallery

Enclosed in this newsletter is your 2007 membership renewal card. On the other side of the card is the 2007 renewal for the PAC Online Gallery.

If you joined PAC after September 1, 2006, you are exempt for 2007. If you joined the Online Gallery after September 1, 2006, you are exempt the web renewal fee for 2007.



### Members News

In September 2006, **Robin Sheard Nyikos** had a number of her *Georgian Bay* paintings exhibited at the Loch Gallery, in the Yorkville area of Toronto.

**Ursula Reese's** show called *Wilderness* was held in Haliburton, Ontario, at the Ethel Curry Gallery from September 30 to October 16, 2006. Ursula's pastels shared space with Gary Chapman's Watercolours and Oils.

**Louise P. Rouleau** exhibited some of her work in *The Man and his Roots* exhibition held at the Bertoni Gallery in Sugar Loaf, New York, from August 1 to September 24, 2006. Louise was also featured in the September issue of the magazine *AtisSpectrum* (New York).

The **International Association of Pastel Societies (IAPS)** 9th Exhibition is now live at [www.pastelinternational.com](http://www.pastelinternational.com). It is well worth a visit. **Dianna Ponting's** painting *Stitch in Time* won a first place award and her painting *Day Dreamer* received an honourable mention.

**Ann Walsh** had her painting *Surge II*, accepted into the Society of Canadian Artists National Open Juried show which was held at the Museum Paper Mill Art Gallery in Toronto, September 30 to October 16, 2006. Ann's paintings *Water Dance* and *Agua Pica* have been accepted into PSEC's 11th Les Pastellistes, national juried show held in Ogilvy's, Tudor Hall, 1307 Ste. Catherine St. West, Montreal from November 3 to 12, 2006.



Left - Ann Walsh accepting the Grand Prize Purchase Award from IPAP organizer, J. Baldini and the Mayor, Niagara Falls, New York.

Right - Jessie Grant receiving her 2nd place award

On September 8 and 9, 2006, the **International Plein Air Painters Paint-out** brought 25 artists from the United States and Canada to paint around Niagara Falls, from the Rainbow Bridge to the Table Rock area. Included in this year's events were a Quick Draw Competition which required participants to complete and frame a painting in 1-1/2 hours - at a location set by the organizers. It was a fun challenge. On the second day, participants were asked to present two framed paintings for the show and judging. PAC member **Jessie Grant** was awarded 2nd prize for her painting *Gazing at the Mist* and **Ann Walsh** received the Grand Prize Purchase Award from the city of Niagara Falls, New York. Her painting *River Shapes*, will be hanging in the office of the Mayor. Pastel paintings took the most awards this year.

**Heidi Rohde's** painting *Sunset Memories* was accepted into the Burlington Fine Arts Juried Show held at the Burlington



## Pastel Artists Canada - Purely Pastel Winter Issue, 2006

Art Centre from October 15 to November 19, 2006. Heidi also has some of her work on display at Artists Walk, Village Square, Burlington, Ontario until the end of December 2006.

**Cathy Cullis** is having her first solo show in the Fireside Lounge at the Burlington Art Centre, Burlington, Ontario, from October 25 to November 28, 2006.

**Ruth Rodgers** has a show of her paintings that were inspired by her recent visit to the New Zealand filming sites of Tolkien's *Lord of the Rings*. The show runs from October 30 to November 30, 2006 in The Learning Centre, A2019, Fanshawe College, 1460 Oxford St. E., London, ON.

### PAC Paint-Outs.....

#### **Brittani Faulkes on the PAC Paint-out in Steveston B.C.:**

On August 26 and 27, Steveston, BC was the site for pastel plein air artists to set up at Britannia Heritage Shipyard and the Gulf of Georgian Cannery. Both historical sites provided an endless supply of potential scenes to paint.

Each day was well attended by plein air pastellists from as far away as Quebec (**PAC member, Eric Bell**) and Washington state (**NWPS president, Steve Hill and his wife Judy**). Pastellists ranged from beginners to established pros. It was a lot of fun for all levels of experience to work together at the different sites.



Clockwise - Peter Molenaar  
Eric Bell and Steve Hill

The weather was hot and sunny both days and on Saturday an employee of Britannia Shipyard kindly shared with the participants a large tray of cold sliced watermelon ... very timely and appreciated!

Also, on Saturday evening 15 participants (a few spouses came along) went out for a west coast seafood dinner at Charthouse restaurant in Steveston Village. The "artists" roosted in the upper corner overlooking the harbour and although dinner was washed down with generous amounts of wine and beer, we were all well behaved and had a lot of fun.

Eric Bell and the Hills arrived early and stayed later so we

four spent the Friday prior to the event driving about scoping out potential future plein air sites and setting up our easels at my favourite spot on the slough at Garry Point. Eric and I returned to Garry Point to paint the Scotch Pond later on Sunday, only to find I was sitting on top of a huge ant colony ... which I quickly vacated.

The weekend was so successful it will undoubtedly become an annual event.

#### **Rosemary Simpson and Ruth Rodgers on Eldora Taylor's annual weekend paint-out on an island in McGeogor Bay:**



Karin Meilinger,  
Ruth Rodgers,  
Rosemary Simpson  
Eldora Taylor  
and  
Sheila Bannerman

Ruth and Rosemary slept over at Eldora and Ray's Meaford home to get an early start Friday morning. Eldora slept in ... it is an Eldora thing. In the rush to get going Rosemary left her purse behind on the front porch. No time to go back, so Rosemary was burning rubber to the Tobermory ferry dock without a license, money, credit cards, etc. The morning sailing was missed by two cars and they had to wait for the afternoon ferry which got them to Manitoulin Island about five o'clock. Rather than take the ferry, **Karin Meilinger** and **Sheila Bannerman** drove to the Birch Island Marina and had been waiting for the others since morning. They spent their time painting the scenery around the marina, so their day was not a total loss.

The cottage and island were fantastic and the scenery was just mind-bending. The same spare but stunning landscapes that inspired Tom Thomson and the Group of Seven was now theirs. They painted all



day Saturday then later settled down to plenty of food, drinks and lively conversation. The experience was enjoyed so much that it was recommended to Eldora that a longer trip to the same location be organized for next Spring.

#### **Heidi Rohde on the paint-out at Drag Lake Lodge in the Haliburton Highlands, ON.:**

Just after Thanksgiving weekend, our group of six—**Anne Cook, Judy Miner, Rosie Habermann, Anne Oakley, Rosemary Simpson** and myself, **Heidi Rohde** traveled north to paint the Fall scenery in the Haliburton Highlands at Drag Lake Lodge. Nothing deterred this group from capturing the beauty of the area. The glorious sunshine of the first day gave

## Pastel Artists Canada - Purely Pastel Winter Issue, 2006

way to rain, sleet, snow and gusty winds but we were cosy and warm in the shelter of the rec hall which afforded many views of the surrounding trees, rocks, vegetation and an array of whimsical cabins from a bygone era. The sun returned to tease us and again presented us with opportunities to paint the lake and the fall colours. Evenings were spent in front of the fire at the rec hall or in the warmth of our cabins. We did not lack for any creature comforts. I am sure everyone had a good time and came away with several paintings and photographs to use in the studio. A thank you to our hosts Karl and Catharine Gonnens and I hope we will be able to plan another paint-out at the lodge next year.



Top - Judy Miner and Rosie Habermann, bottom - Ann Cook and Heidi Rohde toasting a wonderful Haliburton paint-out.

### Mini-Bios.....

**Ingrid George** is a young mother of two children and has been creating graphite portraits for over 10 years. As of 2006 she began to experiment with soft pastels and enjoys the soft feeling and warmth they reflect in her paintings. See Ingrid's painting *Warmth Needed* on the back cover.

**Cindy Gerszke** grew up in Ottawa and moved to Toronto to study Aerospace Engineering at Ryerson University. She currently lives in Montreal. Cindy has no formal fine art training and began painting in acrylic in 2000 after her sister bought her some paints and brushes for Christmas. In 2005 Cindy started painting in oils and only recently began experimenting with pastels. The beauty and colour of the land inspires her to try to capture the scene on canvas and most of her work is based on photos taken during her travels. Cindy says, "I am interested in learning more about painting techniques, colour and composition but for now, my art remains a wonderful diversion from my full-time occupation." See Cindy's painting *Sunset in Paradise* on the back cover.

**Rosie Habermann** was born and raised in the northern part of Germany. She came to Canada in the summer of 2003 and

made Port Credit, Ontario her new home. Rosie is a mostly self-taught artist who began to take courses at the Springbank Art Center in Mississauga where she discovered her love of pastels. Rosie paints still life, landscape, wildlife and animals and hopes to have her own shows in her new little studio. See Rosie's painting *Maple Leaf* on the back cover.

**L. Susan Priest** retired two years ago and at long last has the time and inclination to turn her attention to her art. Susan says, 'I dabbled with oil paints until this Spring when I was fortunate enough to take a workshop at Dianna Ponting's studio where I fell in love with pastels. It is the bright, clean, clear colours of pastels that won my affection. I may be new to the medium but I have tons of enthusiasm for learning and exploring the colourful world of pastel!' See Susan's painting *For the One I Love* on the back cover.

**Ruth Rodgers** has been drawing and painting all her life but has only recently taken up pastels. Now, as she gets closer to retirement from her full time job she is exploring the potential for a new career as a painter. Ruth is inspired by her immediate surroundings and hopes that her work will help viewers see the beauty in the everyday world. Ruth focuses mostly on the rural landscapes and rhythms of agricultural life in the counties encircling London, Ontario and occasional trips to exotic locations. Ruth also enjoys interpreting the human journey through figural works. She has a number of solo and group shows scheduled over the next eighteen months. See Ruth's painting *Red Robe* on the back cover.

### International Association of Pastel Societies Seventh Biennial Convention

Hyatt Regency Albuquerque - May 11, 12 & 13, 2007  
Pre-Convention Workshops - May 9 & 10, 2007

**Space is limited on all activities - don't be disappointed. REGISTER EARLY!**

The registration flyer is now posted on the IAPS website  
[www.pastelinternational.com](http://www.pastelinternational.com)

It can be downloaded and printed by those who wish to sign up. If anyone would like to receive a copy by mail, send a SASE to IAPS, P.O. Box 2057, Falls Church, VA 22042

The Special room rate at the Hyatt Regency Albuquerque is \$105 US per night plus tax, single, double, triple or quad occupancy.

Rosemary Simpson will be attending the convention so if you plan to attend contact Rosemary, she would like to make arrangements ahead of time for all PAC members to meet and get to know one another. **Looking for a roommate?**  
Contact Rosemary at: [president@pastelartists.com](mailto:president@pastelartists.com).





**NOTES  
to all  
PAC Members**



**Sharing Pastel Info.....**

**Barb Elmslie** is a Signature member of PAC and lives in Harrington, Quebec

*I would like to thank all my friends at PAC for the beautiful bouquet of flowers that was sent to me. They are splendid with all the bright colours of summer and autumn. I received them shortly after my third chemo session and believe me I needed cheering up.*

*So far I am luckier than a lot of other cancer patients in that the side effects have not been too extreme. No nausea at all but lots of pains and aches. I have one more treatment to go on October 5th and then I do not know what happens. It certainly makes it easier to have a good support group behind me like PAC and I really appreciate it.*

*Sincerely and with love,  
Barb Elmslie*

**Lillian Hayter** is a Founder, Life Time and Signature member of PAC and lives in Barrie, Ontario

*I would like to express my thanks for the copies of the Newsletters you have been sending me. I love to hear how the club has progressed since the original founding all those years ago.*

*I was sorry to hear of the passing of Diane Philpott. I first met Diane when painting with the Portrait Guild in Toronto (Rexdale) with portrait artist, Albert Chiarinidini and have been aware of her work on many occasions. Another good artist gone.*

*I vowed to get something together for the Open Juried Show in Hamilton, but somehow my good intentions went awry and although I had the paintings, I did not manage to get the slides on time! Maybe next year???*

*I'm glad to hear how well the club is doing and often wish I was still active in it. But I'm afraid that is something I can only wish for!*

*Keep up the good work and I'll look forward to your next newsletter.*

*Yours truly,*

**Lillian Hayter**

**Ursula Reese** wishes to send her thanks to all PAC members for the lovely bouquet of flowers she received. Ursula said receiving them and knowing that the members of PAC cared enough to think of her at this time helped brighten her day.

Ursula, Past President of PAC, is a Founder, Life Time and Signature member of PAC and lives in Cookstown, Ontario.

We all wish you a speedy recovery, Ursula.

**Pastel Painting on Cheesecloth - Claire Chevarie**

"I am all excited...I participated at an Art Fair in Shediac this Labour Day weekend and had tremendous success with my pastels on cheesecloth. Sold 11 paintings! I usually sell 2 or 3 per show. This new technique is a show stopper. This is a new technique which I have concocted from several experiments with different materials. It is fun to use and cost effective.



**Support**

**Materials:**

- 1 Masonite (hardboard) or any sturdy surface such as illustration board or mat board
- White Gesso
- Acrylic Fine Pumice Gel (Golden)
- Piece of cheesecloth (the kind you use for making jelly) cut to fit the board with 1/4" overlap all around.
- Big old brush 2" or 3"

**Directions:**

Using brush, paint 2 or 3 coats of gesso loosely on the smooth side of the Masonite. Let the gesso dry between applications (1 hour or so). **Note:** Paint gesso on with wide strokes criss-crossing all over the surface.

**Note:** Before going on to the next step, make sure to have your cheesecloth already cut to size.

**Next Step:** Using same brush, apply a thick application of fine pumice gel. Thickness of pumice gel should be generous enough so that you can embed the cheesecloth right into it before it dries.

Working quickly, lay the cheesecloth onto your surface stretching over the edges as you go. Using your brush with more pumice gel, push the cheesecloth down into the surface. Check to make sure the cheesecloth is really embedded into the pumice gel. There should not be any section of the cheesecloth that looks dry or uncovered. You can glue the edges of the cheesecloth down with more pumice gel. Let this dry at least overnight before painting on the new support.

The cheesecloth surface is so forgiving, you can scrape away errors with a blade, wipe it off with a brush, wash it off with a wet rag. You just cannot kill it.

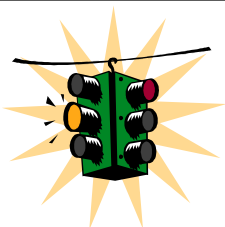
I hope this gets your creative engines going.

**Claire**

## Pastel Artists Canada - Purely Pastel Winter Issue, 2006

Claire has sent several images of paintings she has done on her cheesecloth board. The one chosen for the back cover shows the wonderful texture this surface gives to pastels. Before retiring she was an art teacher for 28 years. Claire lives in Moncton, New Brunswick and winters in Florida.

Here is one more tip from Claire - "A steam iron works really well to set colours on your support/painting any time you like. I like to set colours (steam) before adding highlights."



### Next Newsletter

Deadline  
January 15, 2007

Send your information on shows, workshops, paint-outs, tips and photos of events to:

Newsletter Editor:  
**June Gauthier**  
Pastel Artists Canada  
P.O.Box 351  
Flesherton, ON. N0C 1E0  
Tel. 519-924-2202  
email:newsletter@pastelartists.com

I read in a magazine just recently that after decades of disinterest in pastel painting, its resurgence as a fine art medium is starting to out-pace watercolour. This new interest has brought a number of new pastels, substrates and other pastel-related products onto the market. Thank you to Claire for sharing her cheesecloth board. I have tried a new board (see below). RTISTX, LLC has sent information on a new substrate they have developed and Gail Sibley shares her research into Plexiglass with us. If you have tried any new products, techniques or just would like to share your thoughts on painting with pastels, please send them to me I would look forward to including them in a future newsletter. **June**

### Pastel Painting on MagnesiaCore:

Maria Carosi of **MagnesiaCORE Inc.**, located in Brampton, Ontario phoned to ask if I would be interested in trying a board they sell. An artist herself, she had already received great response from other artists who had used watercolour, acrylic and oil on the board with great success. Now she wanted to know if a pastel artist would also find the board a good substrate for pastels.

MagnesiaCore is a hard, flat material which has both a smooth and a textured side. It is acid-free, non-toxic, environmentally friendly and very inert. The samples Maria sent me were (1/8") thick but it comes in other thicknesses and in sizes up to 48"X96". I used the textured side and loved it. See my painting *Aimee's Blue Bowl* on the back cover. The texture seems to hold the colours up to the light and they just sparkle, putting glass in front the painting took some of this sparkle away, so I am off to the art supply store to see what

I can use to hold the pigment on the board without destroying the colour. The smooth side works well with a coat of Golden's Acrylic Ground for Pastels or Art Spectrum's Pastel Primer.

Here are a few prices from their price list. They have many more sizes and will cut to order. (1/8") board:

	<u>Retail</u>	<u>Wholesale</u>
36" x 36"	\$22.39	\$14.93
24" x 24"	9.95	6.63
12" x 24"	4.98	3.32
12" x 14"	2.91	1.94

Maria is looking for distributors to sell this product as an art board. For more information 905-794-1333 or email Maria at maria@magnesiacore.com or www.magnesiacore.com.

**Another new substrate was brought to our attention by Jeff Hall, General Manager of RTISTX, LLC, Canton, Texas.** The following is copied from their promotional material.

RTISTX has 4 artist substrates on a rigid PVC board. All RTX boards can be easily cut to size, accept multiple mediums and have 100% archival qualities. In addition, no dry mounting is necessary when the RTX boards are used in place of flexible paper products. Following is a brief description of each RTX board.

RTX240 - Taupe was made for multiple mediums - soft pastel, oil and acrylic and accepts gesso. Multiple layers can be applied with ease and can be blended to make colour changes right on the board; oil and acrylic artists like the RTX240 for the same reasons.

RTX280 - White like the above was made for soft pastels, oil and acrylic, however, it has a smoother grit which allows oil pastels to come into play. Oil and acrylic artists usually use this board. Charcoal and Conte artists use it because the board can be toned first with both water and dye pigments. Soft pastel, even the lesser grade soft pastels, look good on this board.

RTISTX also have RTX300 - White for oil and watercolour pencil. It also accepts oils, acrylics, pen and ink and mixed media. RTX420 - White for watercolour, colour pencil and watercolour pencil, it will not warp when using watercolour.

For more information visit their website www.rtistx.com or contact Jeff Hall at 903-245-6817 or jeff@rtistx.com



### Framing with Plexiglass

Gail Sibley writes from Saltspring Island, BC., where PAC's 16th Annual Open Juried Exhibition will be held in August 2007.

Last year I met Terry Schaeffer. Terry's day job is in conservation research at the Los Angeles County Museum of Art. We discussed the problems encountered with framing pastels and the need for them to be under some sort of glazing. (By the way, conservators are against the use of fixative and against framing with the pastel right up against the glazing.)



*Pastel Artists Canada - Purely Pastel Winter Issue, 2006*

We talked about the problem with reflections and also the problems of shipping pastels under glass. I also mentioned the fact that many shows only accept work under plexiglass (ie. Not under glass). We commiserated about the main problem with plexi namely, static electricity. Terry then told me about a product used at the LA County Museum of Art - Optium Acrylic.

I contacted Archivart, the company that carries this product and they sent me 4 small samples, all of which feature anti-static and anti-reflective properties. The 4 varieties are:

- 3mm Optium Acrylic, 93% UV filtering
- 4.5mm Optium Acrylic, 93% UV filtering
- 3mm Optium Museum Acrylic, 98% UV filtering
- 4.5mm Optium Museum Acrylic 98% UV filtering

All can be cleaned with ammonia-free cleaner.

The product information says that the anti-static property makes it suitable for “pastels, charcoals and other friable media and also minimizes the attraction of dust to the glazing surface.” It goes on to say that the anti-reflective provides “less than 1% light reflection.” The information points out that since the glazings are “lightweight and shatterproof, they are ideally suited for travelling collections and provide greater security for art on exhibit and in storage.”

So, let’s have a look. Each sample came coated on both sides with a removable blue plastic sheet obviously to protect it from scratches, dust and fingerprints. I peeled off the coating to test for reflections and static.

To test for reflections, I placed the acrylic over a dark, almost black print and turned it in all directions. The only time I saw any reflection was when I was in silhouette against the window. The reflections appeared a purplish colour not unlike the colour you get under black light. Having said that, if I looked at the image itself (rather than searching for reflections) there was no evident reflection—I could view the entire image clearly. I then tried the same experiment with regular glass - total reflection with no image in sight!

To test the anti-static qualities of the acrylic, I first rubbed it against my clothes and then placed it about a quarter of an inch above an unfixed pastel. Not a speck of pastel was pulled toward the acrylic. Incredible! (I also held it over my arm - not a hair lifted!)

I also checked for colour change with the acrylic. I lay the samples against a white piece of paper and found only a very slight yellowing, certainly nothing as noticeable as the colour change under UV glass (which gives a greenish tinge).

If I could find a downside (other than the prohibitive), it would be that the acrylic shows up fingerprints very clearly so wear gloves! I also wonder about the long-term consequences of using this glazing. For example, how long will it resist scratches? How long will the anti-static property remain?

And the price for this almost perfect glazing?

- 3mm Optium Acrylic.....US\$35/sq.ft.
- 4.5mm Optium Acrylic.....US\$40/sq.ft.
- 3mm Optium Museum Acrylic.....US\$40/sq.ft.
- 4.5mm Optium Museum Acrylic.....US\$45/sq.ft.

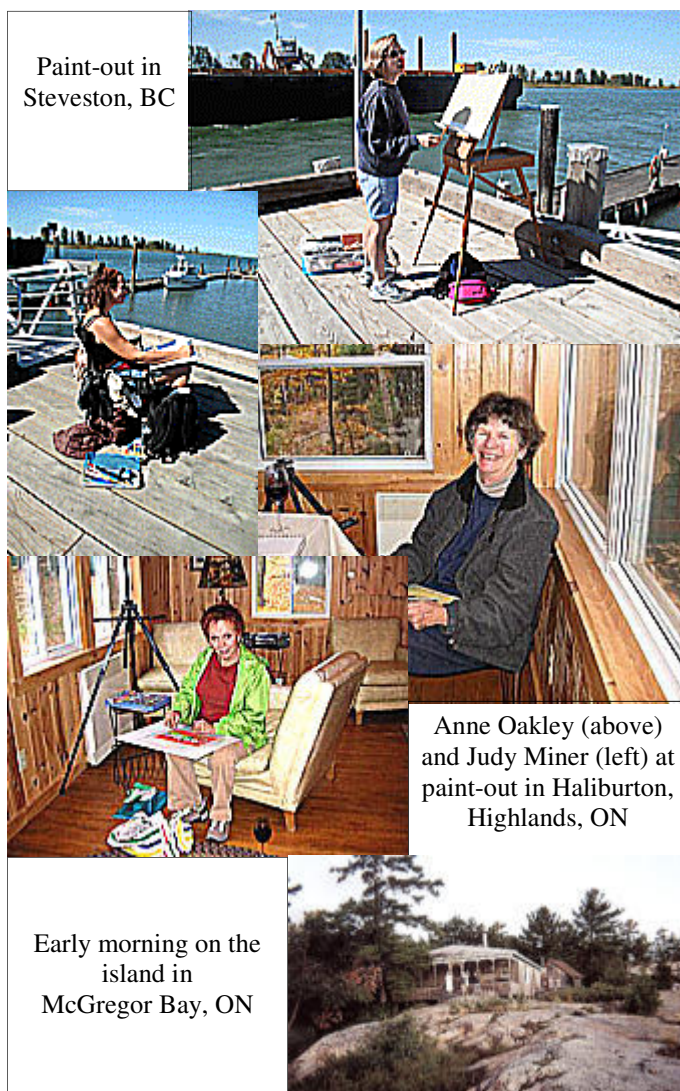
Basically, for a 16”x20” outer dimension, you will need 2.22 sq. ft. = US\$77 worth of 3mm Optium acrylic.

A \$25 cutting and packaging fee also applies to each order so it would be best to do a group order. That would save on shipping costs too.

I would have to say that although the cost is out of this world, Optium Acrylic would certainly be worth acquiring for that special pastel. We have all heard the “I love your work - too bad it’s under glass” comment. Well, unless you touch this stuff, you would never know it is there!

To contact Archivart, call Susan Losco at 201-270-5428 or email: [suelosco@optonline.net](mailto:suelosco@optonline.net)

***Paint-out fun! Plan to take part in one next year.***



## Pastel Artists Canada - Purely Pastel Winter Issue, 2006



### PAC Online

Tim Daniels

[www.pastelartists.com](http://www.pastelartists.com)

During the past three months the number of members showing in the website's *Online Gallery* has increased to forty-two. Our newest artists are **Ron Ireland, Ruth Rodgers, Nancy Osadchuk** and **Miriam Slan**.

Ron works mainly with portraits and figures. His image entitled *Linked* has drawn many comments for its technical merits and its hopeful symbolism.

Ruth is in the process of rediscovering her passion for art. She is off to a great start with three upcoming exhibitions already posted on her web page.

It was a real delight to have Nancy Osadchuk go online. PAC has a very geographically diverse membership that is increasingly represented on the website. Nancy joins Brittani Faulkes and Darcy Polny as our current representatives who live west of Ontario. We would love to have a lot more people from "out there" in the Gallery.

Our newest online member is Miriam Slan, a very successful interior designer from Toronto. Her artistic interests are reflected in her paintings of rural central Ontario. Check out Miriam's page to see her imaginative use of colour that conveys a restless energy and keen observation.

If you would like to join us online, send me the application form on the next page or you can download the form from the PAC website. My address, email and phone number are on the form. If you have any questions or concerns please do not hesitate to get in touch with me.

Tim

### Scam Artists Cruising the PAC Online Gallery

As Tim mentions above Ruth Rodgers is a new participant in the PAC Online Gallery so you can imagine her excitement when she received an email from Katherine Cole wanting to purchase some of her artwork for her new apartment in Jo'burg (sic), South Africa. Ruth responded with a dollar amount and Katherine was sending a cheque. Fortunately for Ruth she decided to share her good news with Rosemary and Tim. We know from Cathy Cullis' research for the last newsletter what happened. Ruth received the cheque for 4 times the agreed amount. Ruth did some of her own research and found out that the RCMP encourages reports on fraud attempts. If any one gets approached, they should forward the email to [info@phonebuster.com](mailto:info@phonebuster.com) which is a collaboration between the OPP and the RCMP. While I was typing this article

an email came in from Lynda Parsons wanting to purchase some of my work for her new South Africa home and a few minutes later I heard from Sally Jackson that the same person wanted to purchase some of her work. Isn't it amazing that so many people in South Africa are anxious to decorate their homes with our artwork. **Be alert - stay informed.**

## Pastel Artists Canada

### Events Calendar 2006 - 2007

Nov. 11, 2006 to January 28, 2007	15th Annual Open Juried Show " <i>Purely Pastel</i> " at the Art Gallery of Hamilton, Hamilton, ON.
November 7	Hand delivery of paintings to the Art Gallery of Hamilton, for the Juried Exhibition, noon to 4 pm.
November 11	PAC 15th Annual Open Juried Exhibition opens to the public.
November 16	Opening Reception, " <i>Purely Pastel</i> " 15th Annual Open Juried Exhibition, Art Gallery of Hamilton, Jean & Ross Fischer Gallery 7 to 9 pm. Presentation of Awards & Prizes.
January 29, 2007	Pick-up paintings from the Art Gallery of Hamilton.

### A little late breaking member news:

**Stephanie Wellman, MPAC, PAC** is a breast cancer survivor and a few weeks ago she underwent a bone marrow transplant. Our thoughts are with you Stephanie and best wishes for a speedy recovery.

**Cathy Cullis'** painting *Rocky Ledge* was accepted into the Burlington Fine Arts Annual Juried Exhibition being held in the AIC Gallery of the Burlington Art Centre from October 15 to November 15, 2006.

### Call for Entry

#### *"Pastels USA 2007"*

21st Annual International Open Exhibition at the Sacramento Fine Arts Centre in California.

Dry Pastel Only

Juror of Awards: *Doug Dawson*

Fee for up to three slides: \$40, members \$35

**Slide entry deadline: March 3, 2007**

For Prospectus: [www.pswc.ws](http://www.pswc.ws) or

Send SASE to: PSWC "Pastels USA"

c/o Maria Sylvester

P.O.Box 9236

Auburn, Ca. 95604

This Newsletter was printed by:

**OniTECH.CA**

YOUR IMAGE IS OUR BUSINESS

Phone: 519-372-0183

Email: [wil@ONITECH.CA](mailto:wil@ONITECH.CA)

Website: [ONITECH.CA](http://ONITECH.CA)

PAC Online www.pastelartists.com

To participate you must be a PAC Member in good standing.

- PAC does not require any commission on sales. Artists are responsible for negotiating their own sales.
• The participants share the cost of the yearly server fee. You may have 10 images on your gallery page plus one with your bio text. A second gallery page is available - up to 10 more images. Now artists can list their own events!
• A selection of each artist's work rotates on the home page.
• Initial Setup Fee: \$70 for setup including 7 images plus a bio page with image. Please attach your bio of no more than 200 words. (Information about you and your art, not a list of shows/awards.) Send your cheque, payable to Pastel Artists Canada, along with this form and good clear images of the paintings you have listed.
• Renewal fee: \$20 due January 1 of each year, payable to PAC by participants. Additional images are \$5 each. Bio changes are also \$5.
• Additional images/changes: You are invited to change your images/text, as you need throughout the year. Keep your images fresh - change them during the year.
• Send slides or photos and your bio ready to publish to: Tim Daniels
284 North Shore Blvd. East
Burlington, ON L7T Tel: 905-632-1978

OR

Email: You may email your images and bio information to : tim@pastelartists.com

Note: email images in jpeg format. High quality, please. Depending on orientation of the work set the largest dimension at: width 450 pixels or height 390 pixels.

Please print clearly

Name: \_\_\_\_\_
Address: \_\_\_\_\_
Tel: \_\_\_\_\_ Fax: \_\_\_\_\_
Email: \_\_\_\_\_

Images: When sending photos or slides please put your name and address along with image title, size and price. The webmaster will endeavour to have your information on the site as soon as possible after your information is received.

Your name, phone number and email address will appear with your bio but not your address. Include a SASE for return of photos/slides.

1. Title: \_\_\_\_\_
Image Size: HxW" \_\_\_\_\_ Price: \_\_\_\_\_
2. Title: \_\_\_\_\_
Image Size: HxW" \_\_\_\_\_ Price: \_\_\_\_\_
3. Title: \_\_\_\_\_
Image Size: HxW" \_\_\_\_\_ Price: \_\_\_\_\_
4. Title: \_\_\_\_\_
Image Size: HxW" \_\_\_\_\_ Price: \_\_\_\_\_
5. Title: \_\_\_\_\_
Image Size: HxW" \_\_\_\_\_ Price: \_\_\_\_\_
6. Title: \_\_\_\_\_
Image Size: HxW" \_\_\_\_\_ Price: \_\_\_\_\_
7. Bio Image: Title: \_\_\_\_\_

A. Initial Fee: \$70 for setup including 7 images & bio/text. Please email or mail text.

B. Additional images/bio change @ \$5 each. \_\_\_\_\_

Note: You may choose to have only the titles and image information on your page. Framing and price can be left off.

My work is priced framed \_\_\_\_\_ unframed \_\_\_\_\_

Please post price with each image \_\_\_\_\_

Included is my cheque for \$ \_\_\_\_\_ payable to Pastel Artists Canada

Signed: \_\_\_\_\_ Date: \_\_\_\_\_

For Pastel Artists Canada use only:

Date Received: \_\_\_\_\_

(This form updated October 2006, earlier forms are void.)





***Warmth Needed***  
**Ingrid George**  
Page 6



***Aimee's Blue Bowl***  
**June Gauthier**  
On MagnesiaCore Board  
Page 8



***For the One I Love*** - page 6  
**L. Susan Priest**



***Maple Leaf*** - page 6  
**Rosie Habermann**



***Sunset in Paradise***  
**Cindy Gerszke**  
Page 6



***Pastel Painting on Cheesecloth*** - page 7  
**Claire Chevarie**



***Red Robe*** - page 6  
**Ruth Rodgers**